



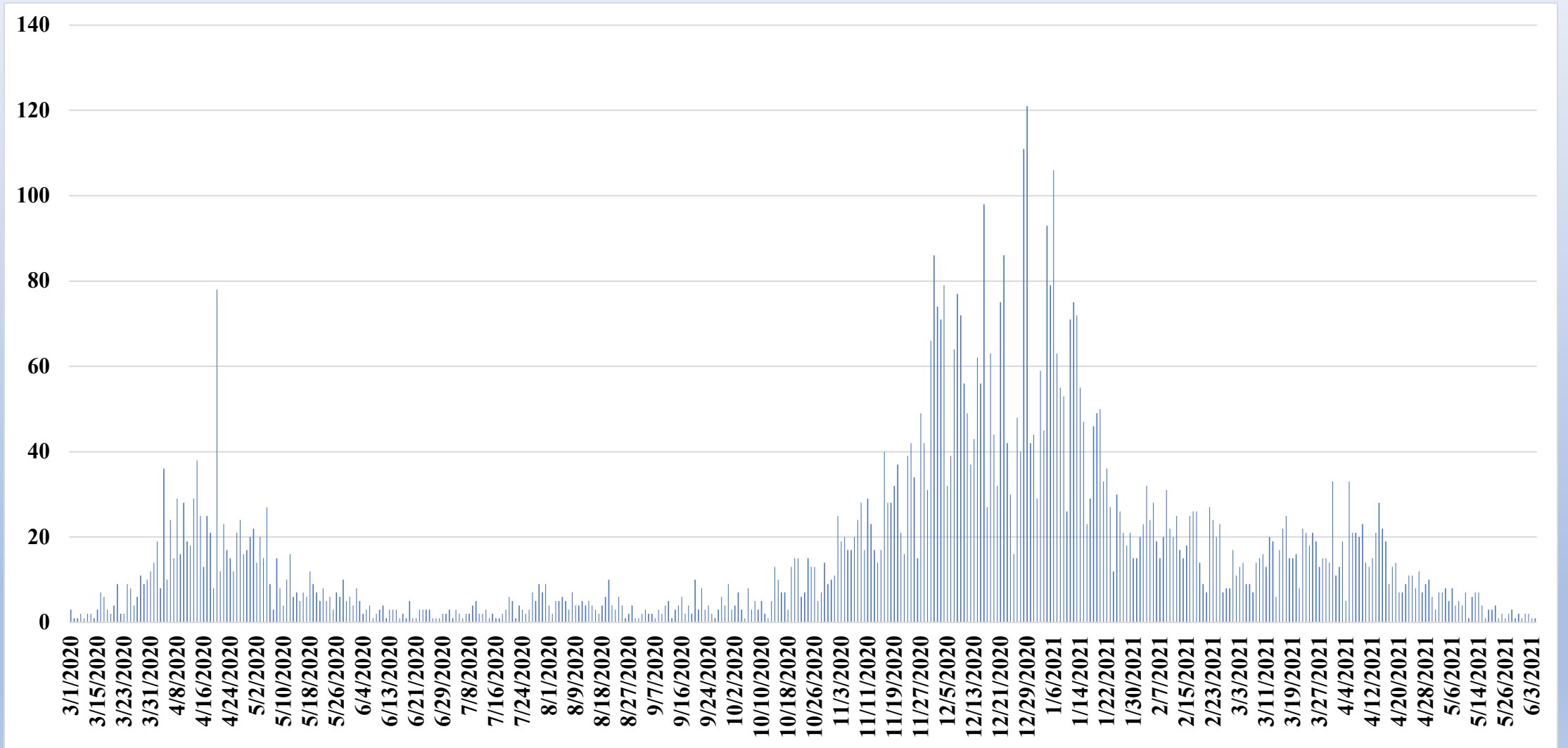
# City of Peabody COVID-19 Stats

## 6/9/21

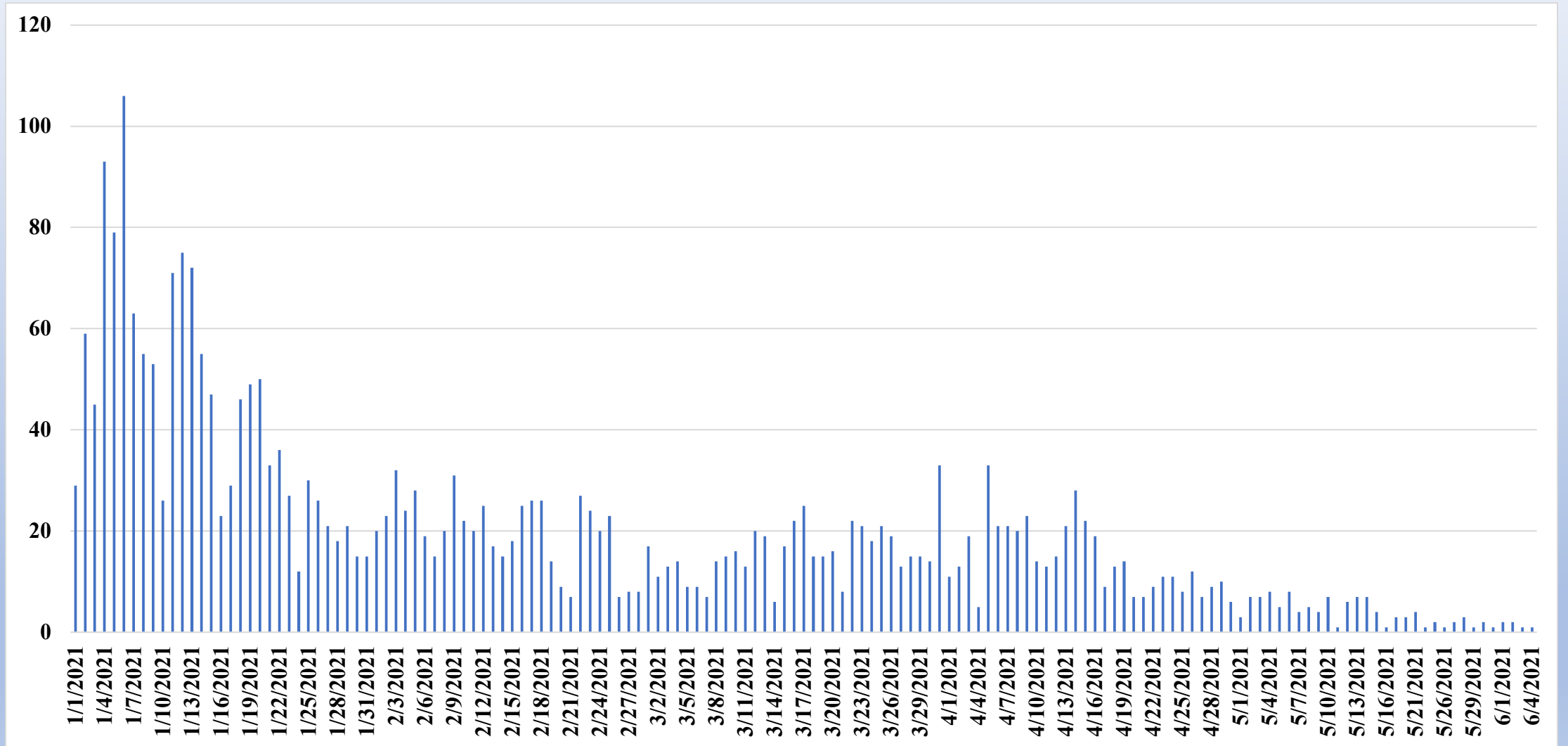


Total cases 7272	Cases in Last 14 days 23 ↓	Average new daily cases per 100K residents in last 14 days 2.9 ↓
Total tests 143,459	Tests in last 14 days 3156 ↓	Percent positivity in last 14 days 1.11% ↓
Vaccines in last 14 days 1039 ↓	Percent 1 or more doses 62% ↑	Percent fully vaccinated 53% ↑

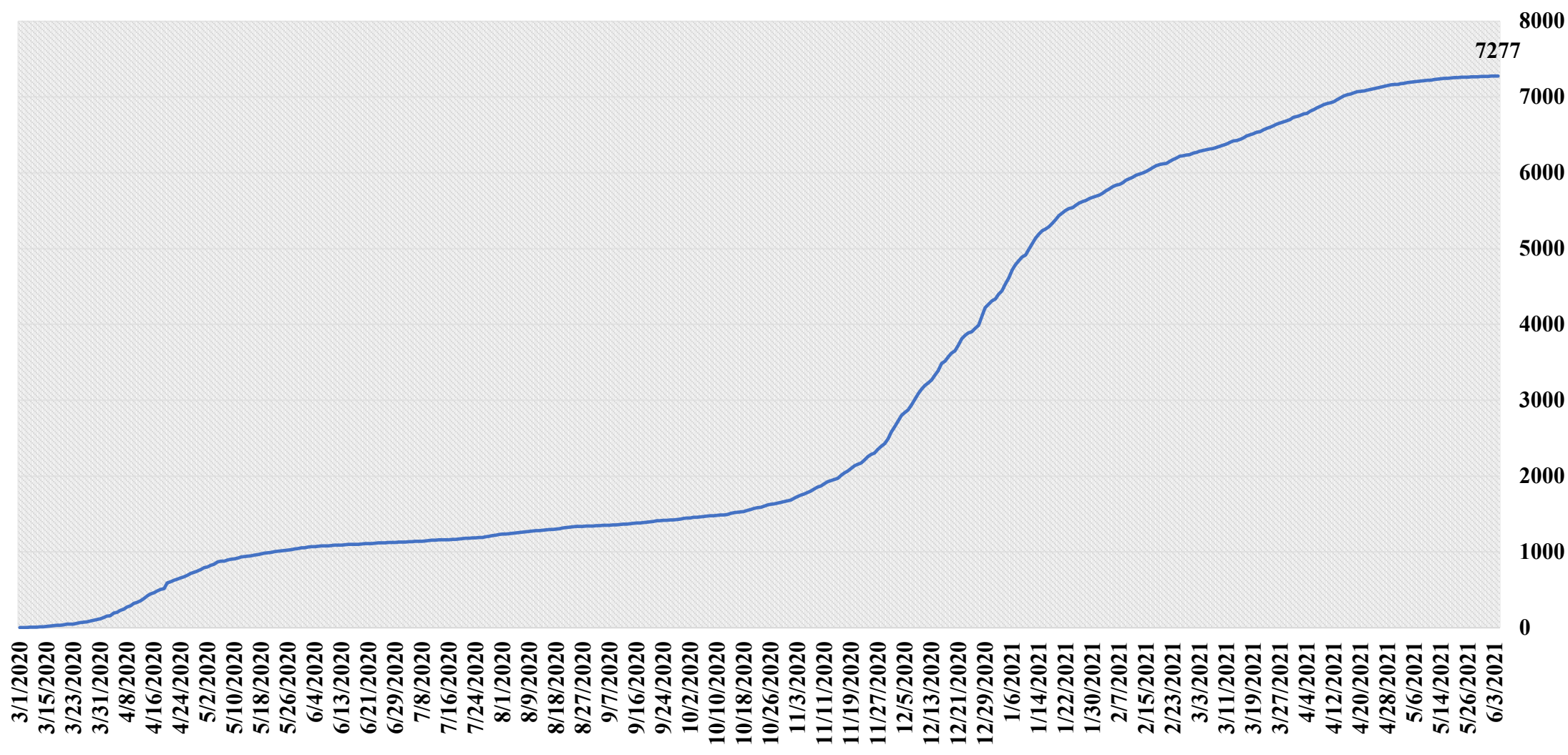
# Peabody Daily Confirmed Cases by Date– 6/7/21



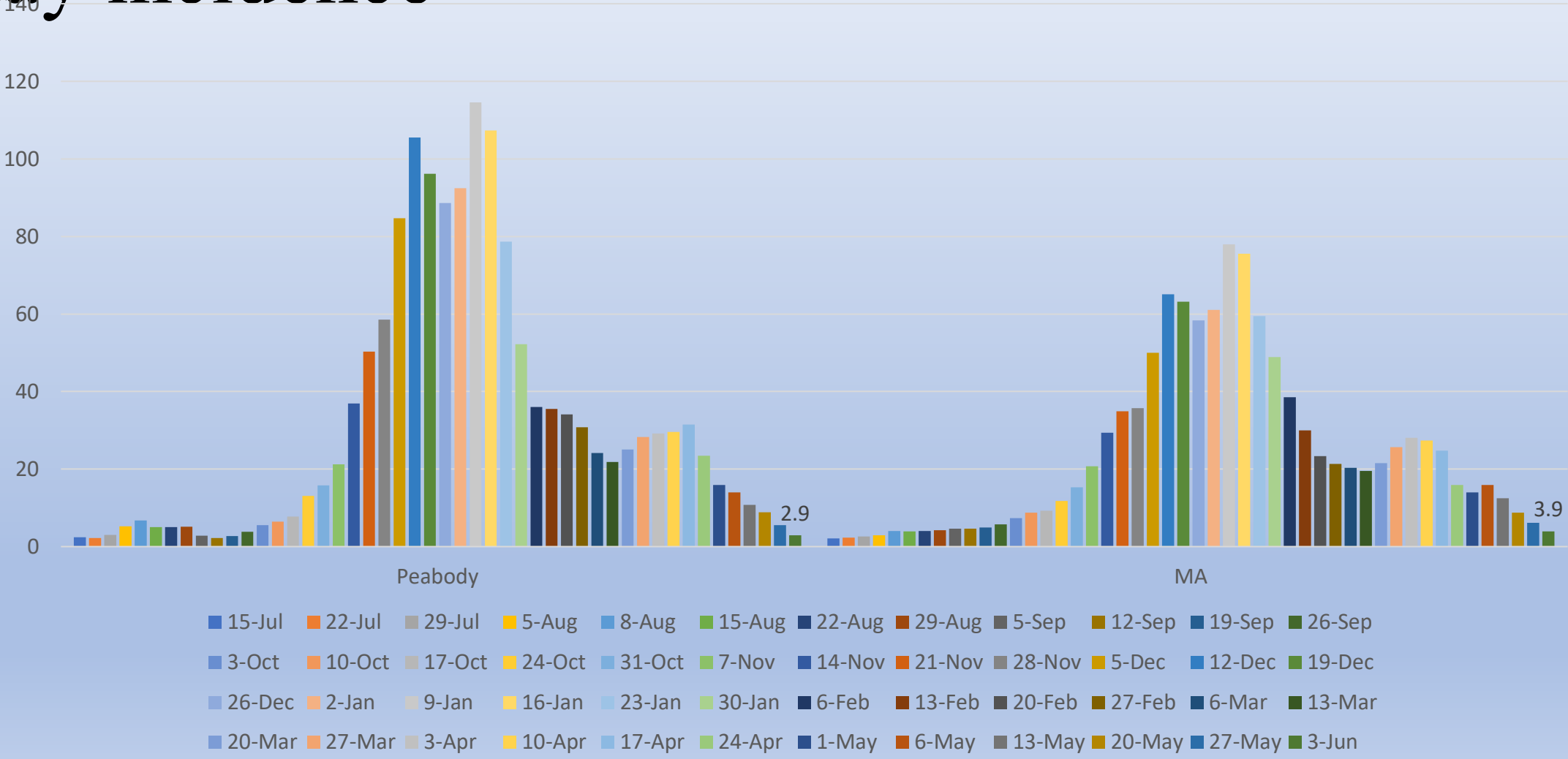
# Peabody Daily Confirmed Cases by Date– 1/1/21 to 6/7/21



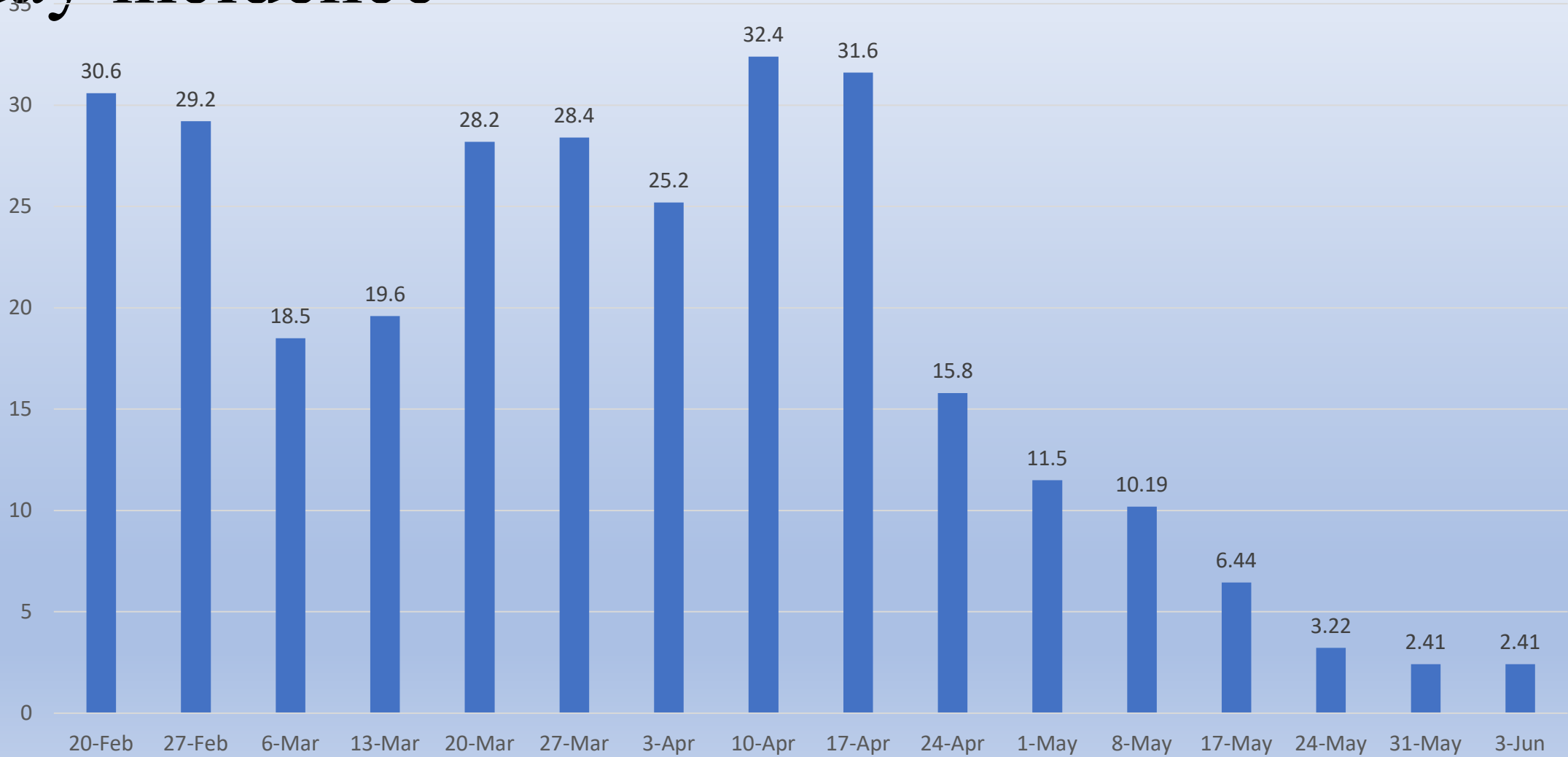
# Peabody Cumulative Confirmed Cases by Date – 6/7/21



# Peabody - Average new daily case rate – 14 day incidence

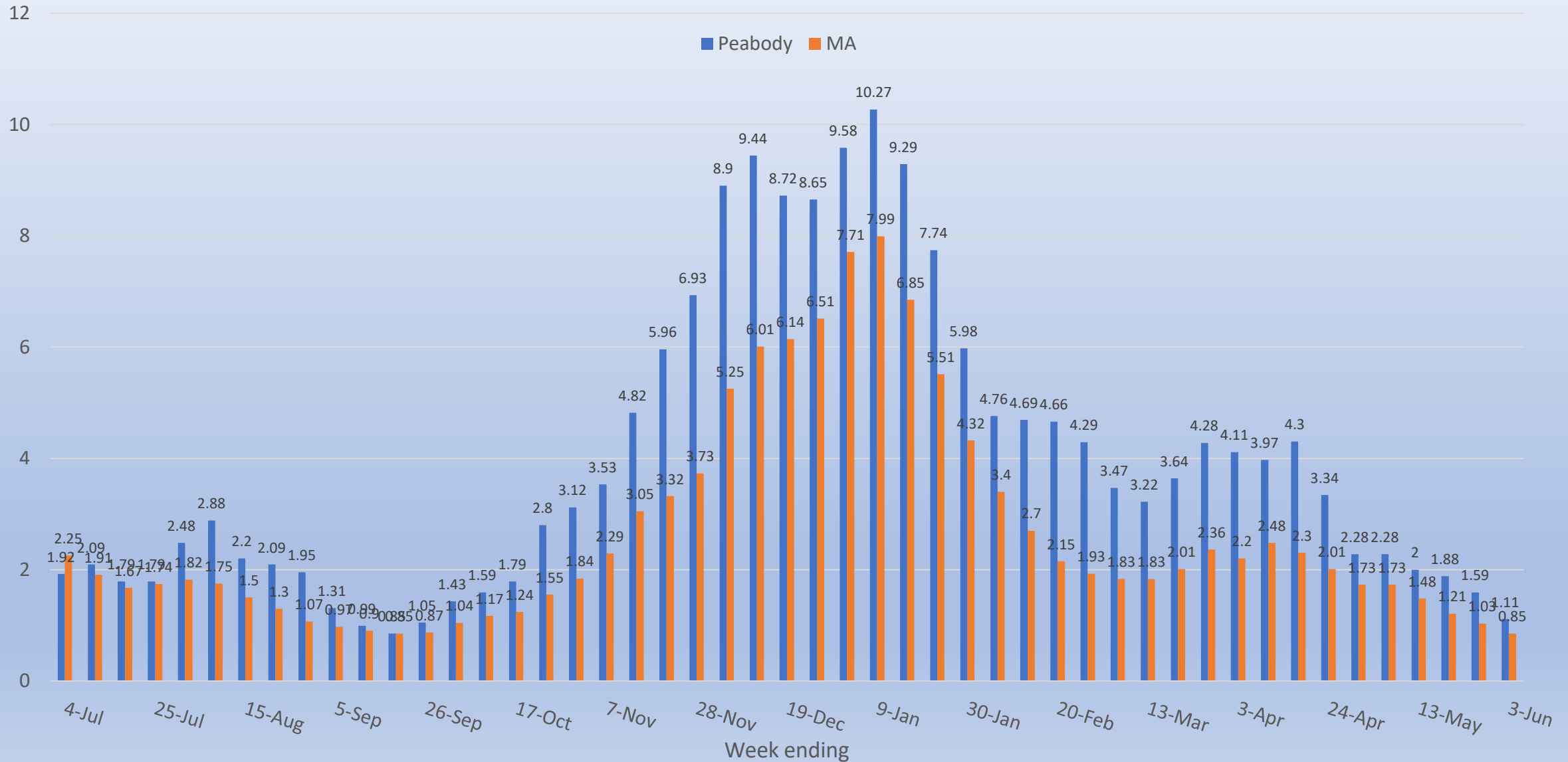


# Peabody - Average new daily case rate – 7 day incidence



Peabody population 53,092

# Percent Positivity, past 14 days



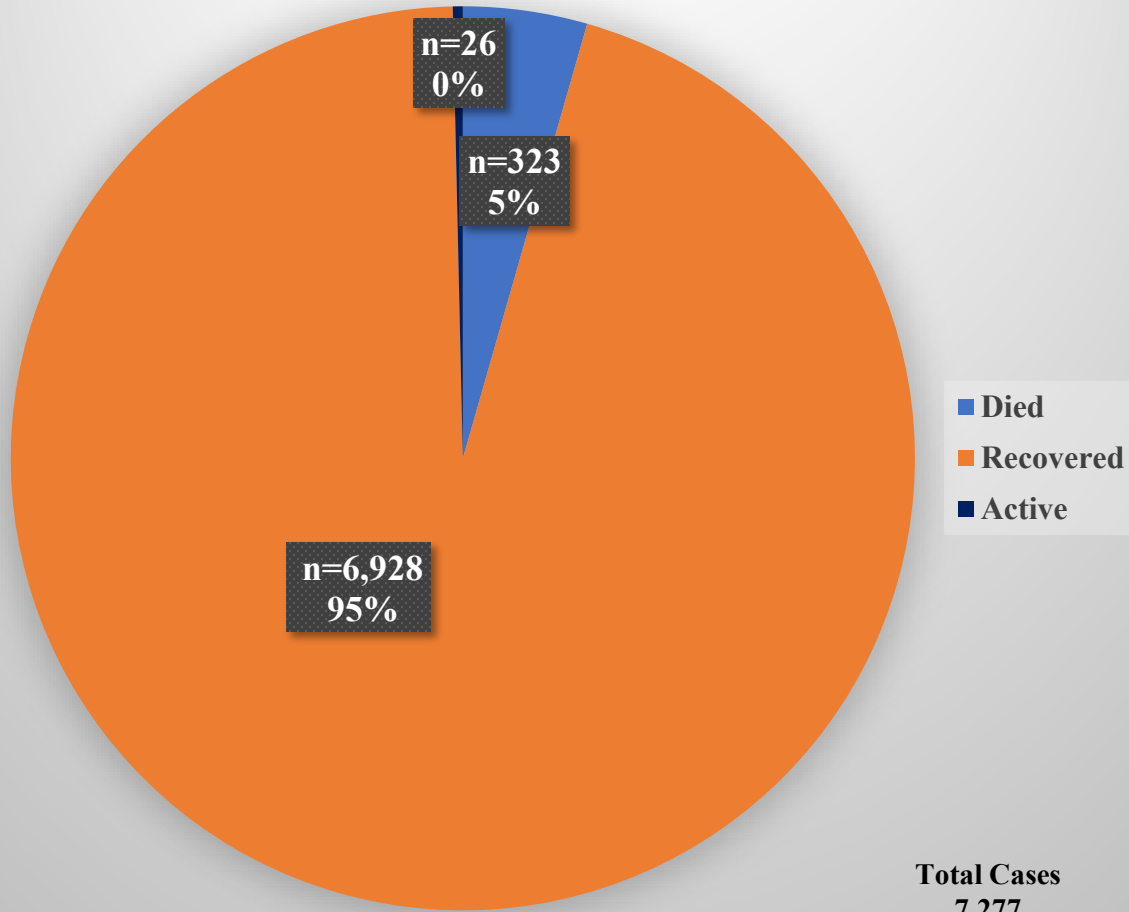
## Count and Rate (per 100,000) of Confirmed COVID-19 Cases and Persons Tested

	Total Case Count	Case Count (Last 14 Days)	Average Daily Incidence Rate per 100,000 (Last 14 days)	Total Tests (Last 14 days)	Percent Positivity (Last 14 Days)
<b>Peabody</b>	6,855	23	2.9	3,156	1.11%
<b>Massachusetts State Total</b>	662,243	3,824	3.9	8,015 per 100,000	0.85%

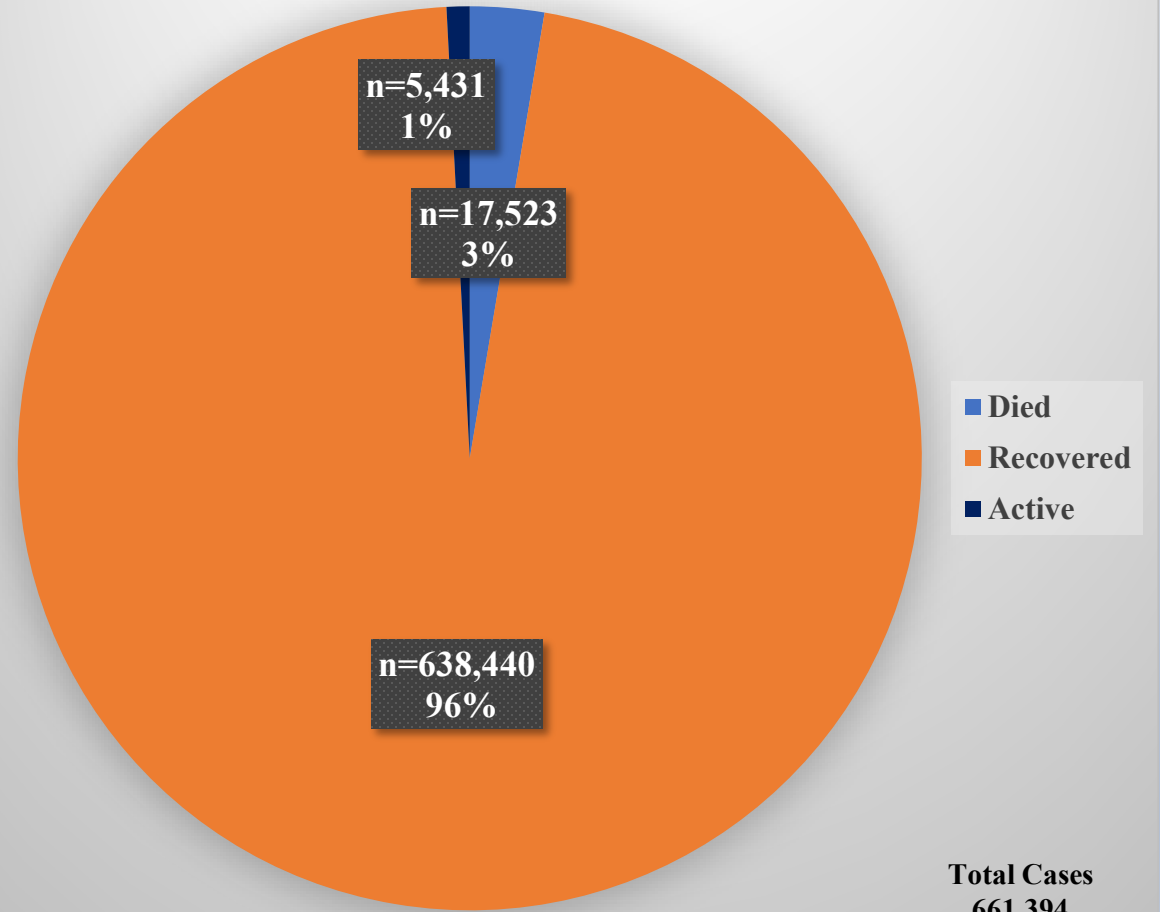


# COVID-19 – Outcomes – 6/7/21

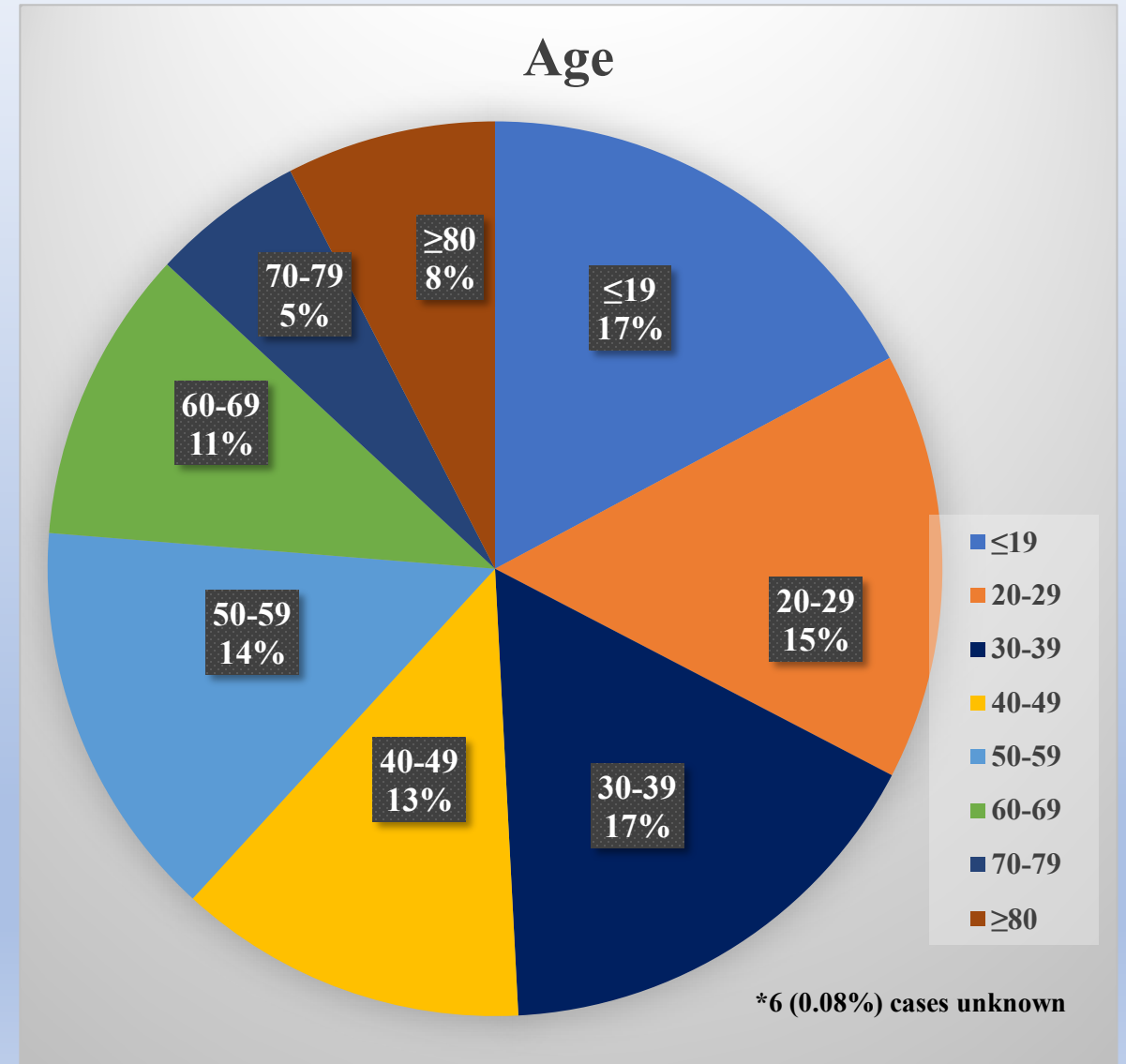
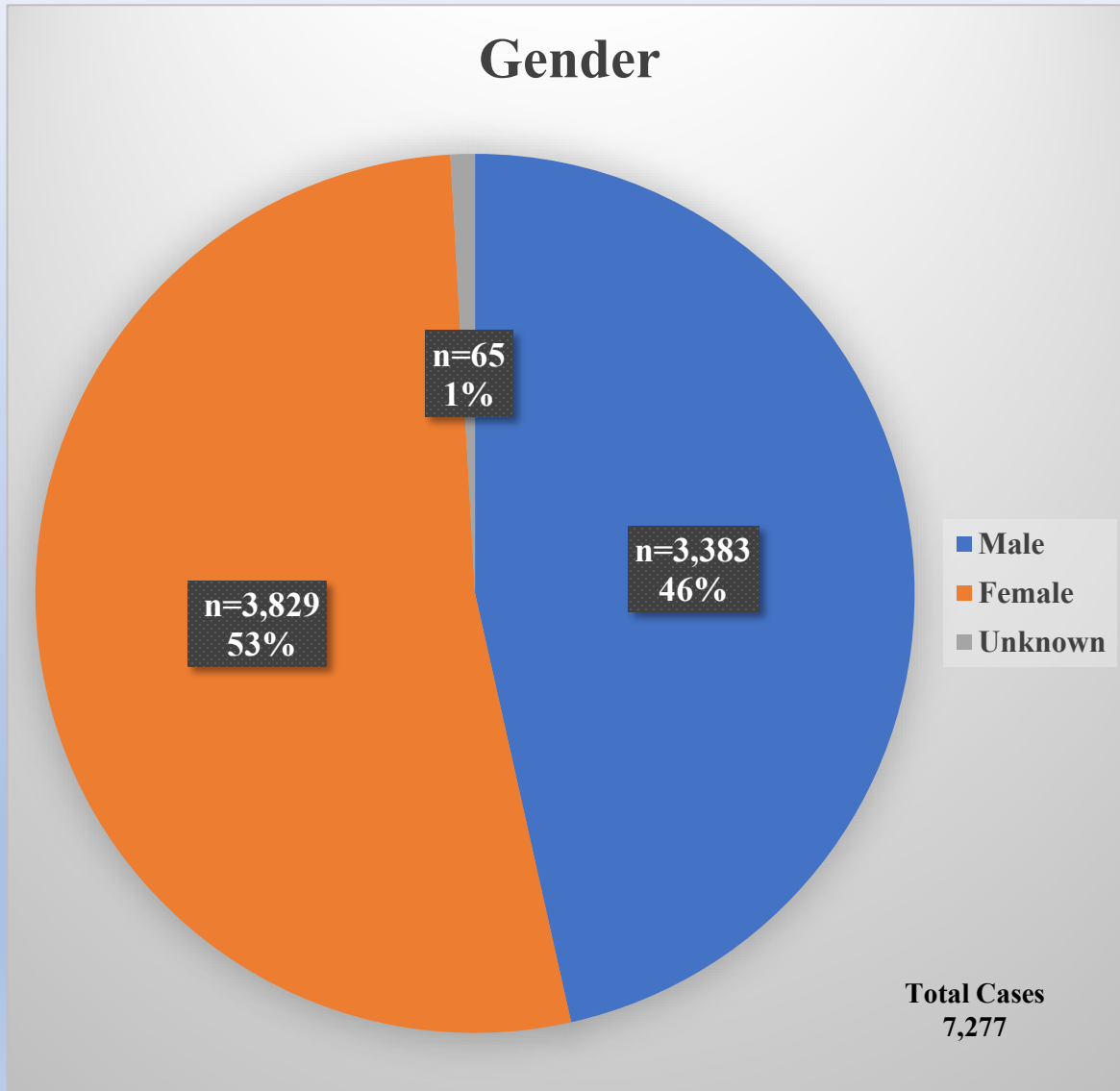
## Peabody



## Massachusetts

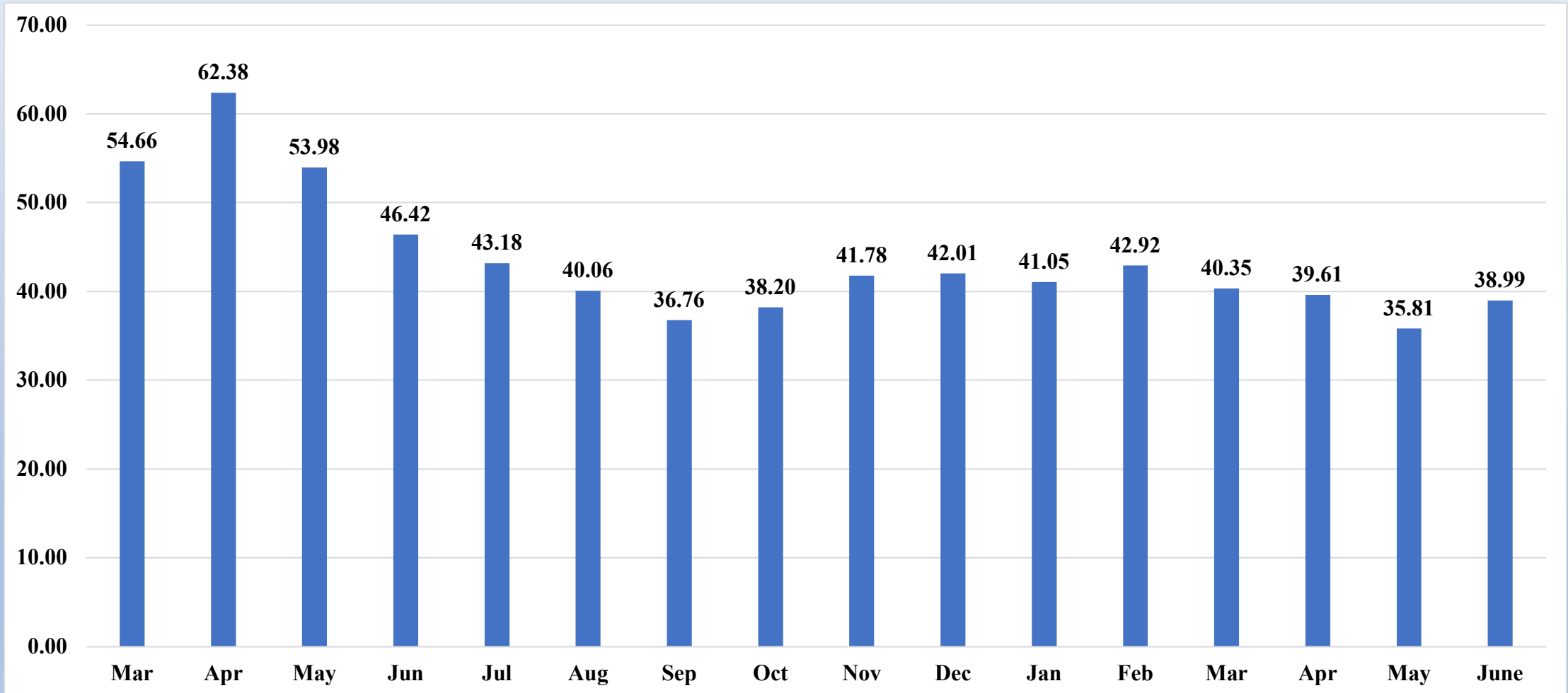


# COVID-19 – Peabody Cases by Gender & Age– 6/7/21



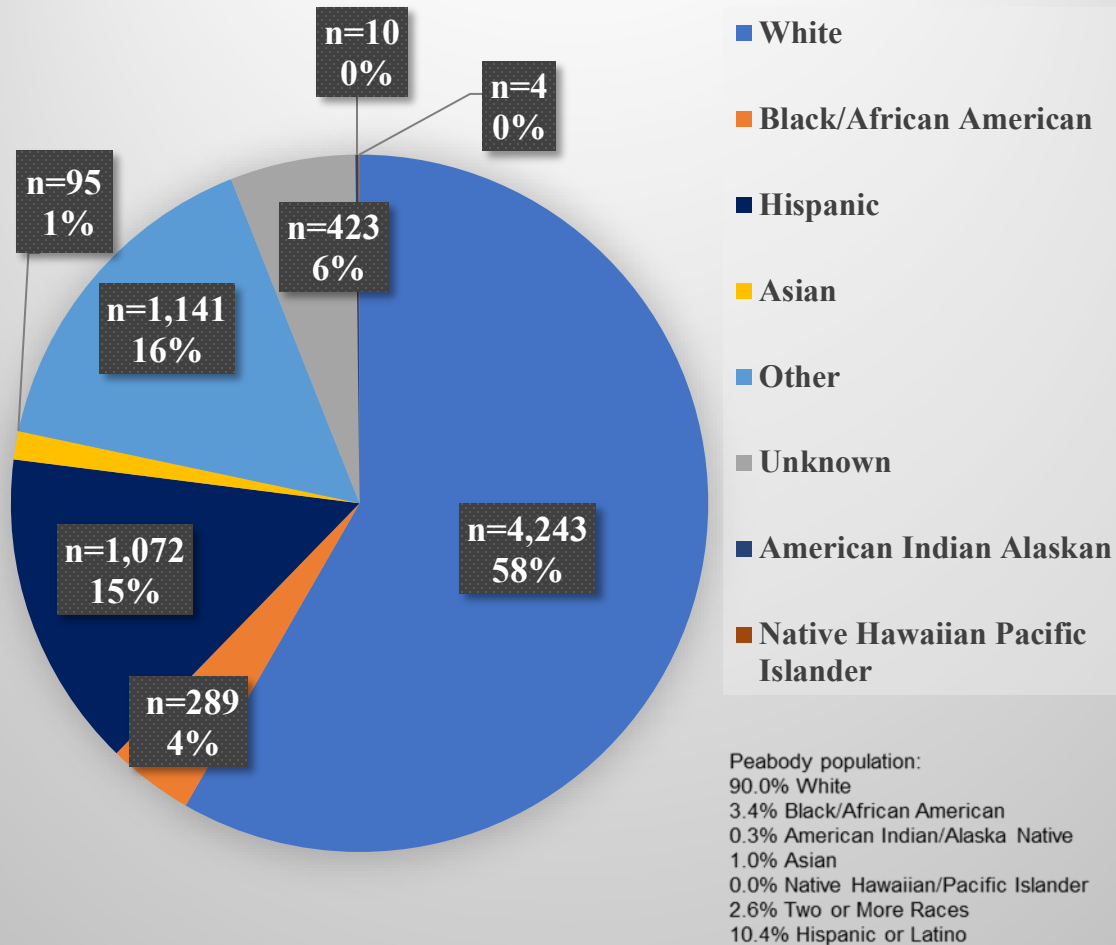


# Peabody Median Age of Cases By Month

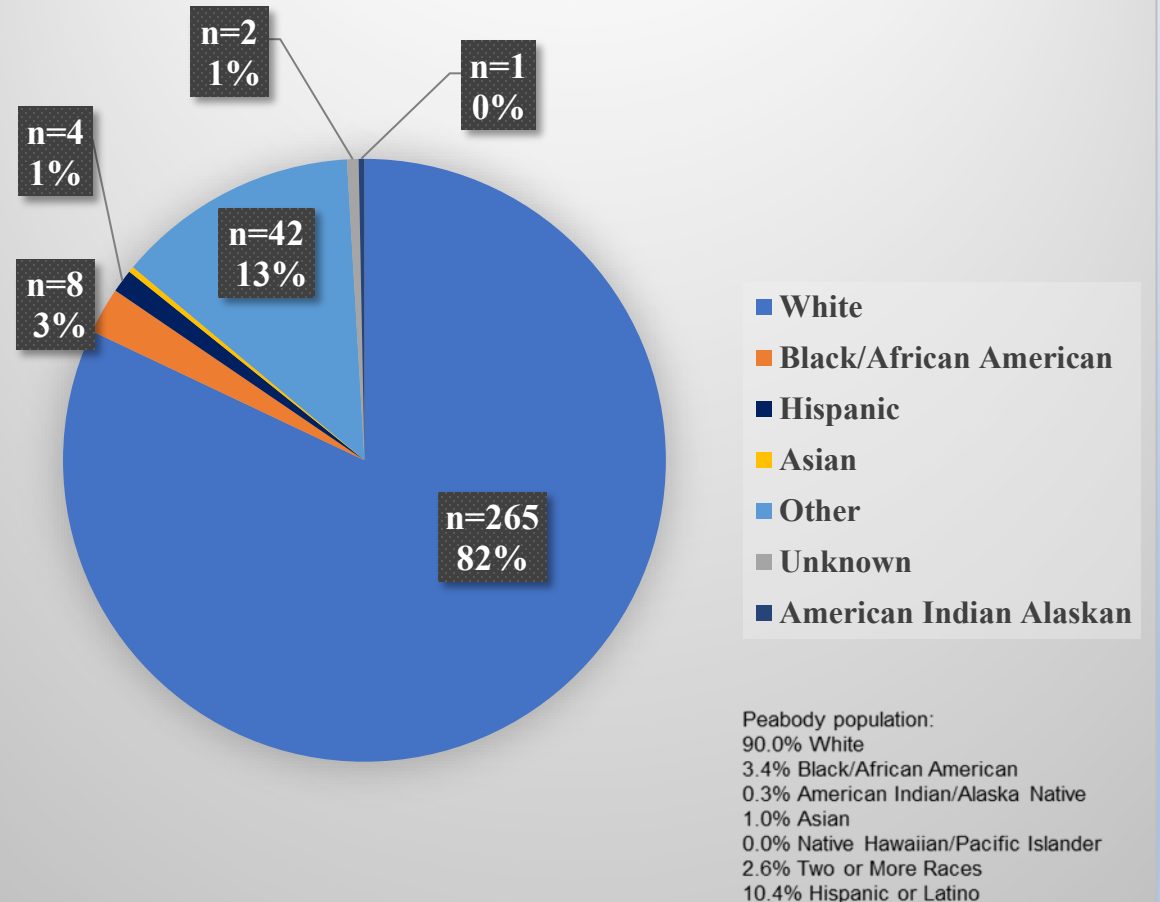


# Peabody COVID-19 – Cases by Race/Ethnicity – 6/7/21

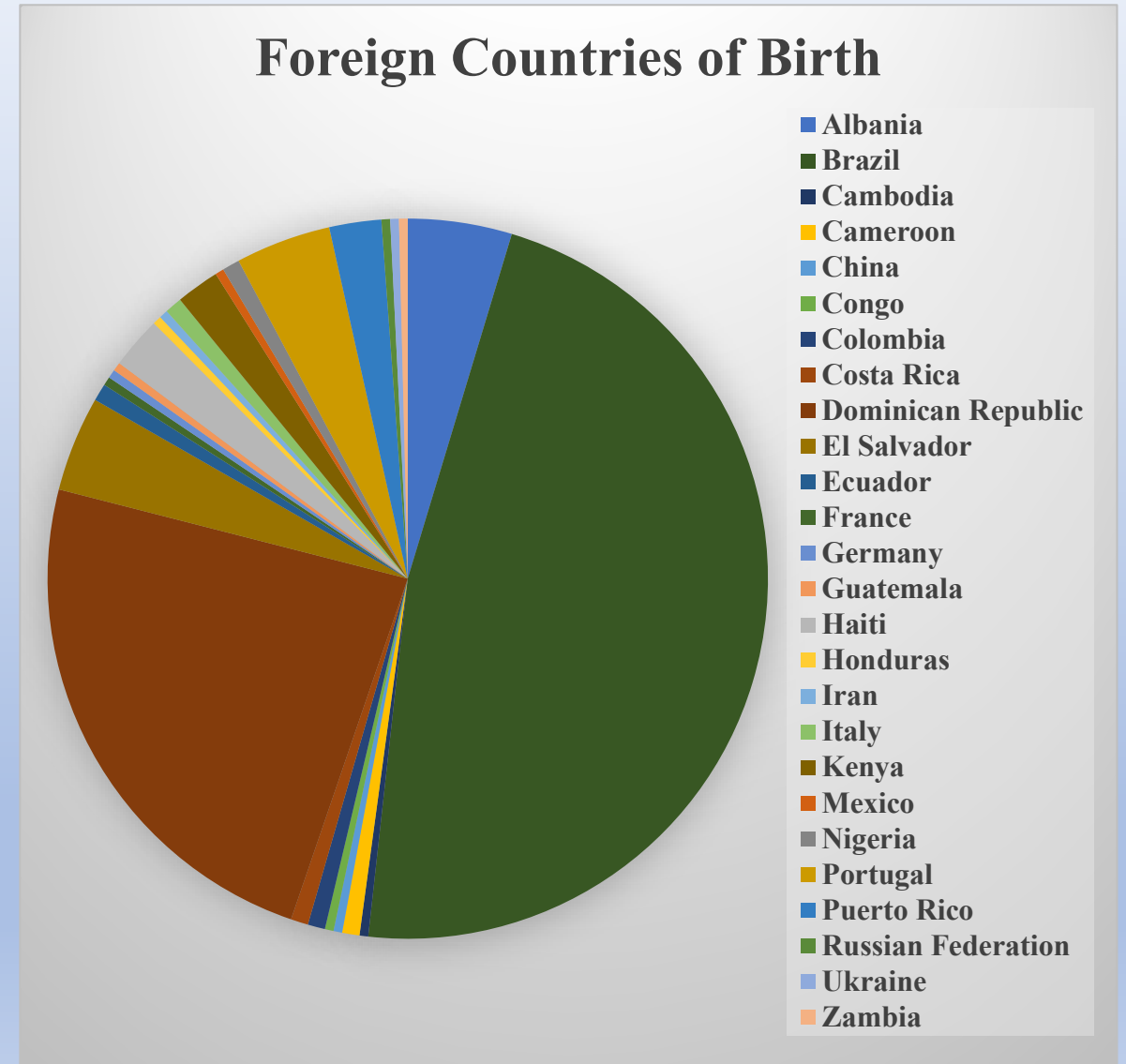
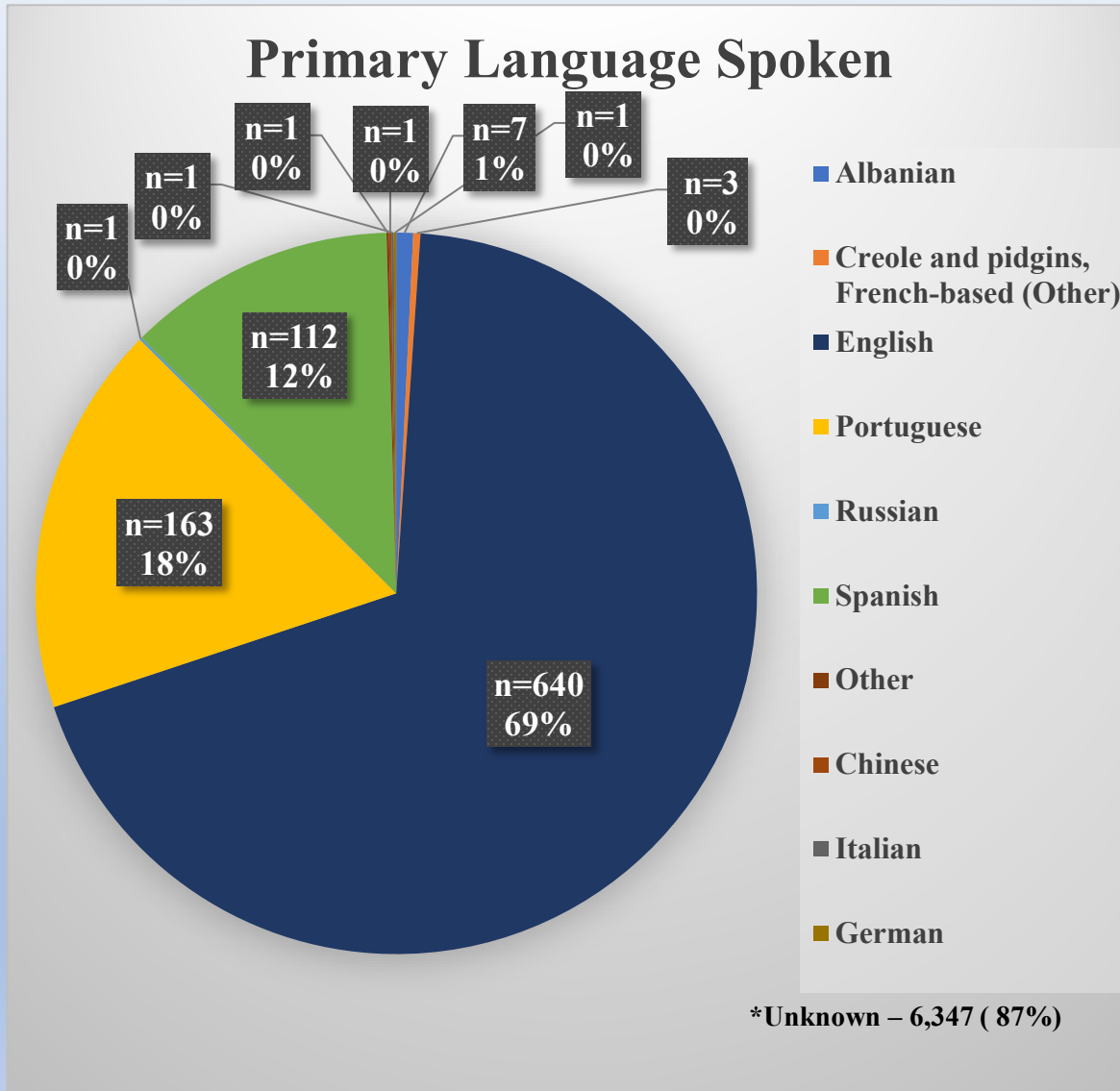
## Cases by Race/Ethnicity



## Deaths by Race/Ethnicity

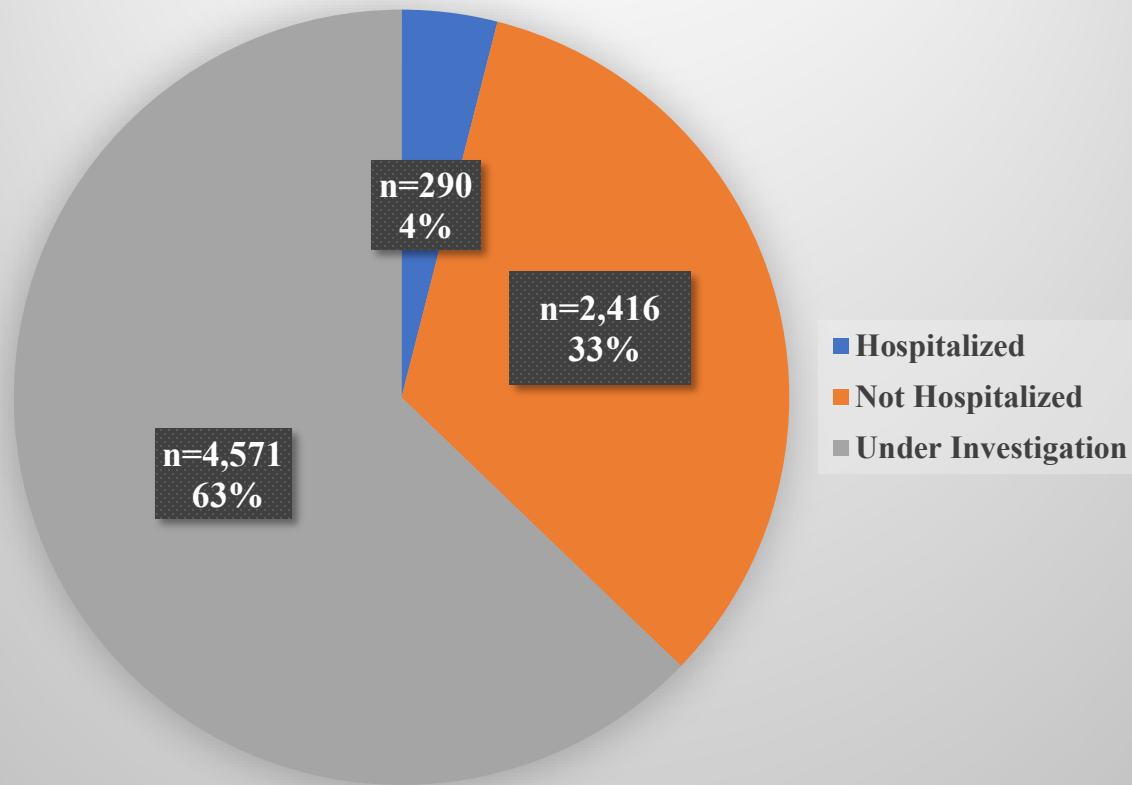


# COVID-19 – Peabody Cases by Primary Language – 6/7/21

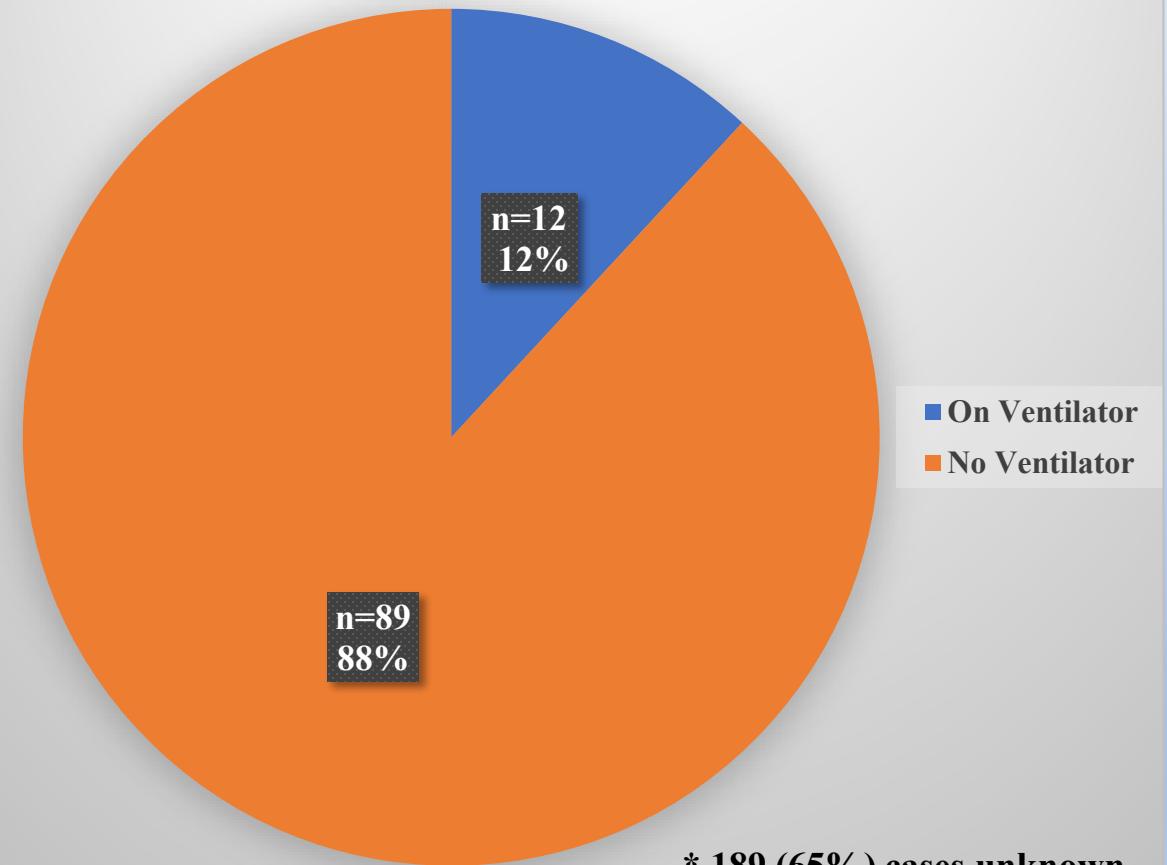


# COVID-19 – Peabody Hospitalizations – 6/7/21

## Number of Hospitalizations

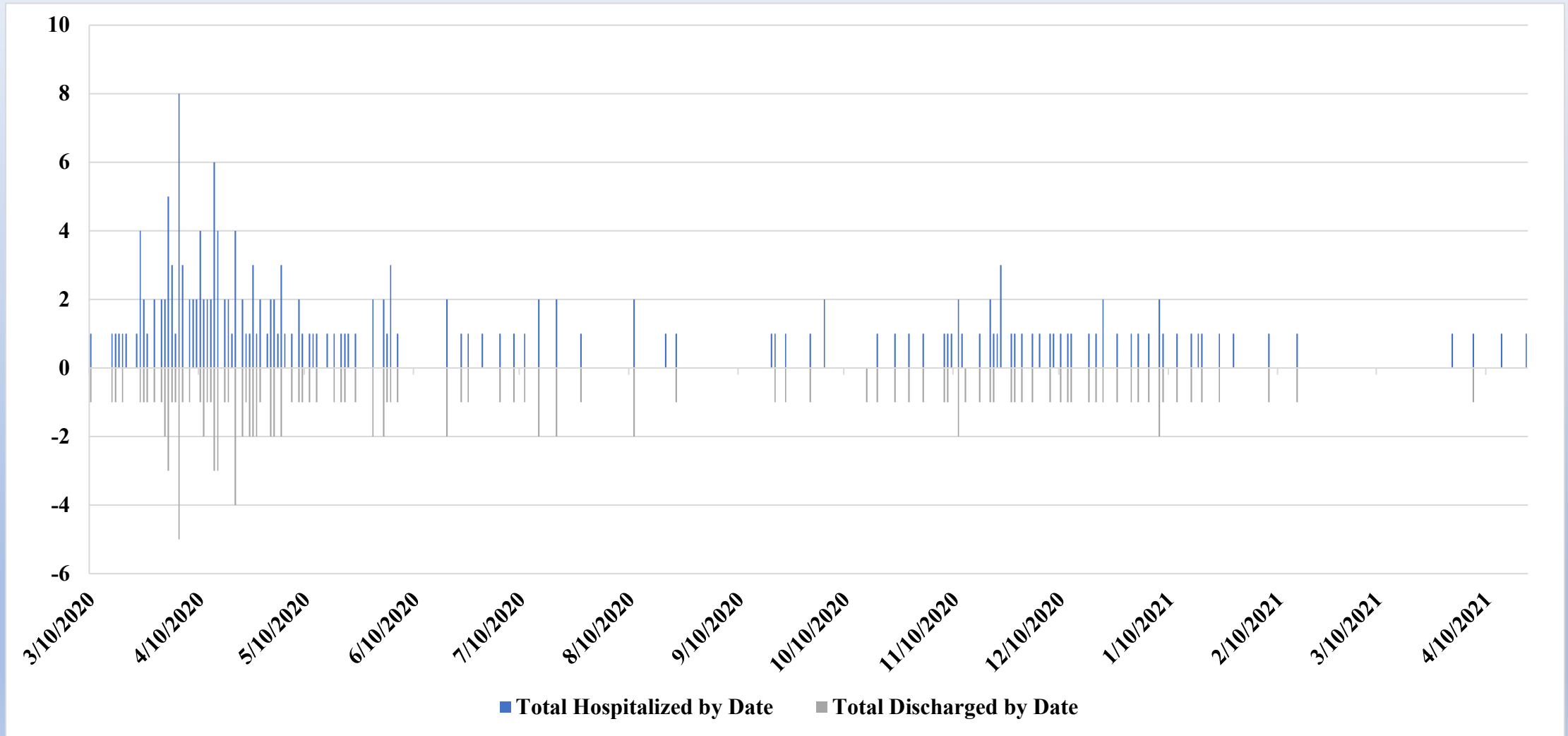


## Hospitalizations Needing Ventilator



\* 189 (65%) cases unknown

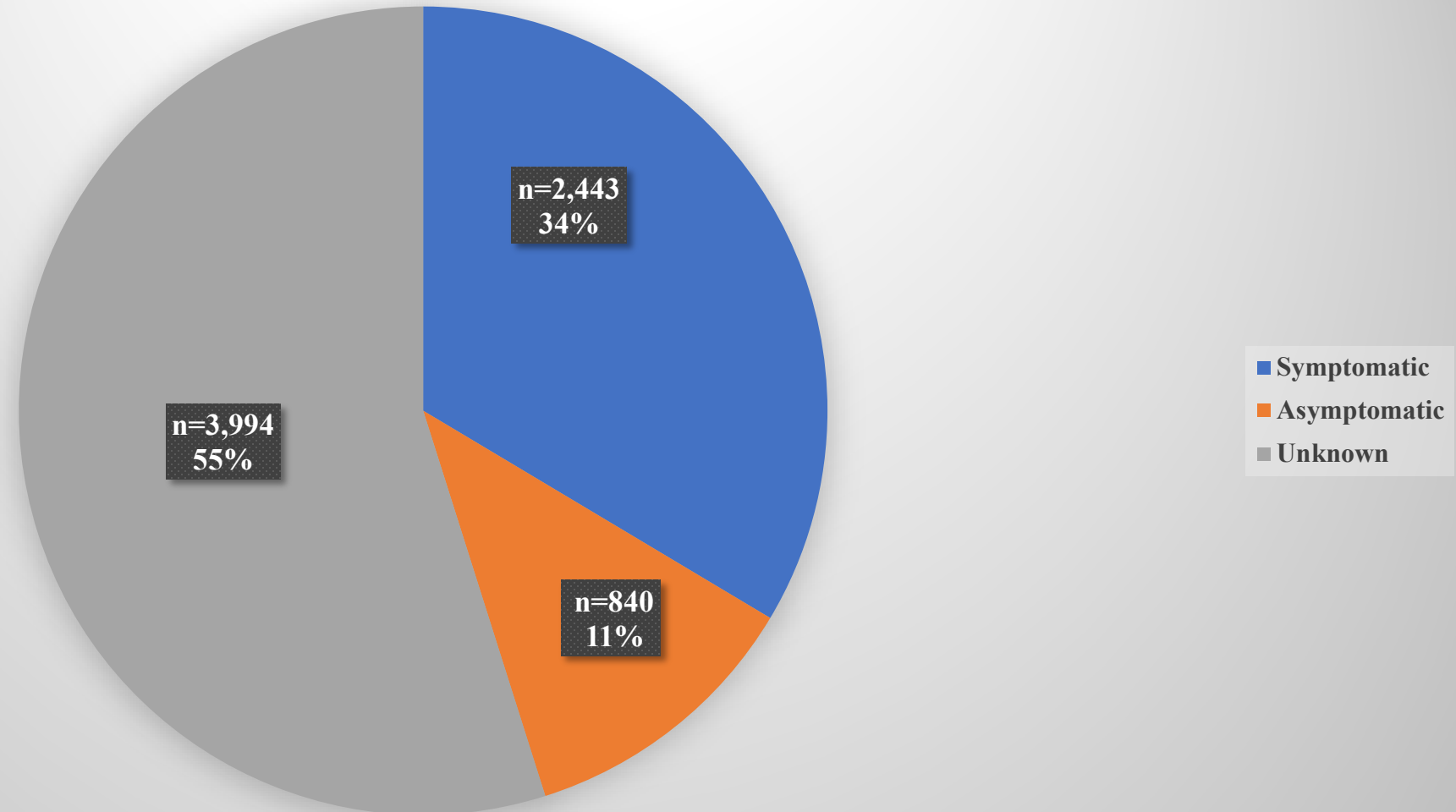
# Peabody Daily and Cumulative COVID-19 Hospitalizations – 6/7/21





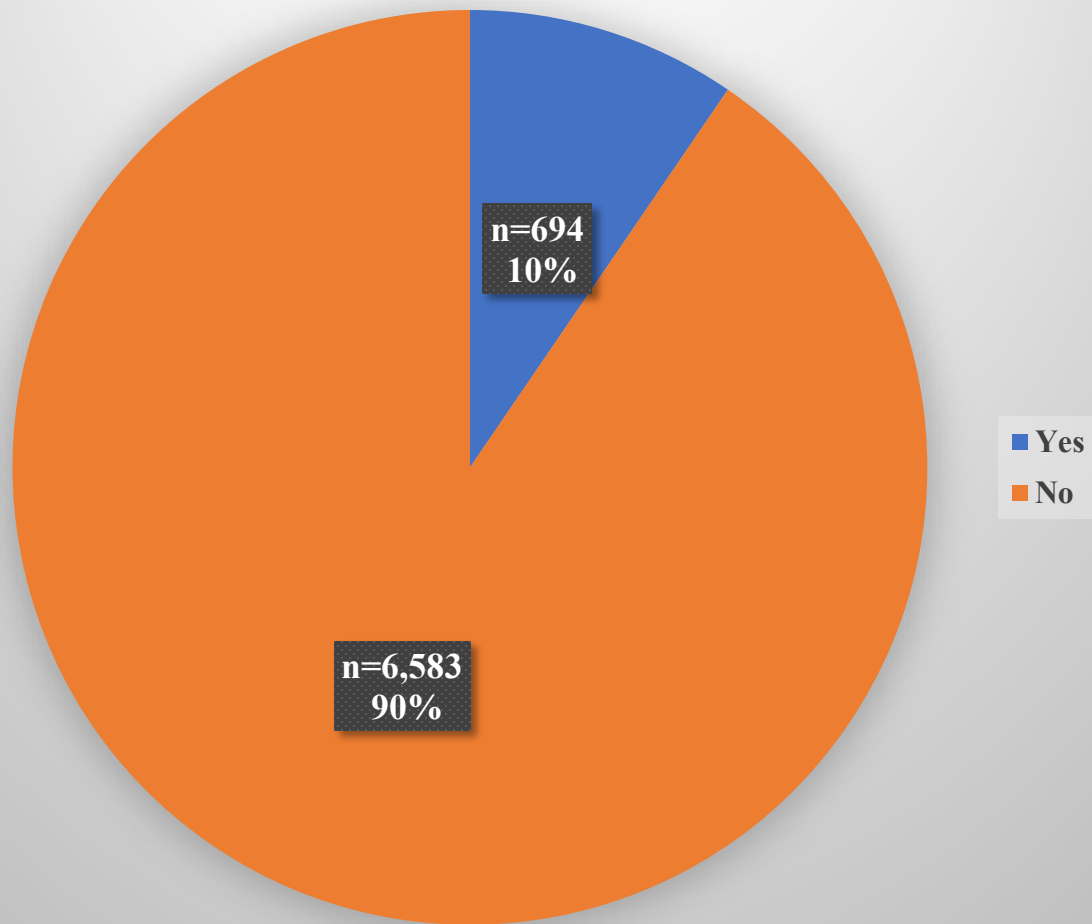
# COVID-19 – Peabody Cases with Symptoms– 6/7/21

## Cases With Symptoms

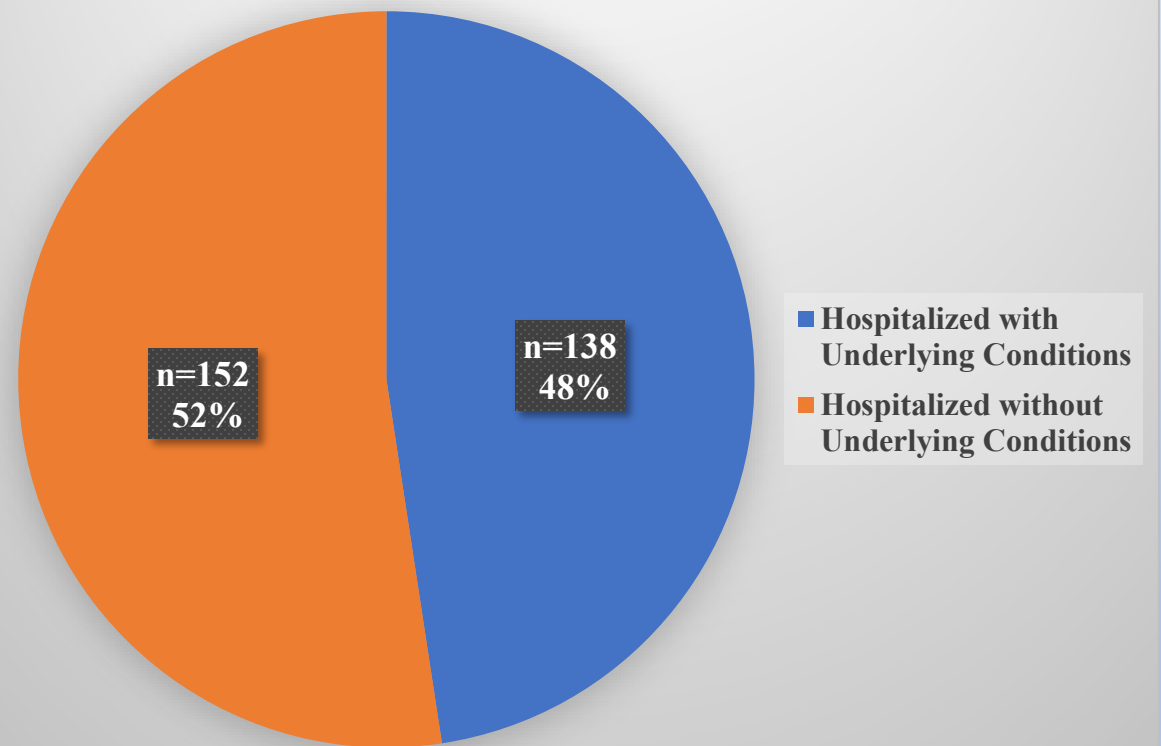


# Peabody COVID-19 – Underlying Health Conditions – 6/7/21

## Cases with Underlying Health Conditions

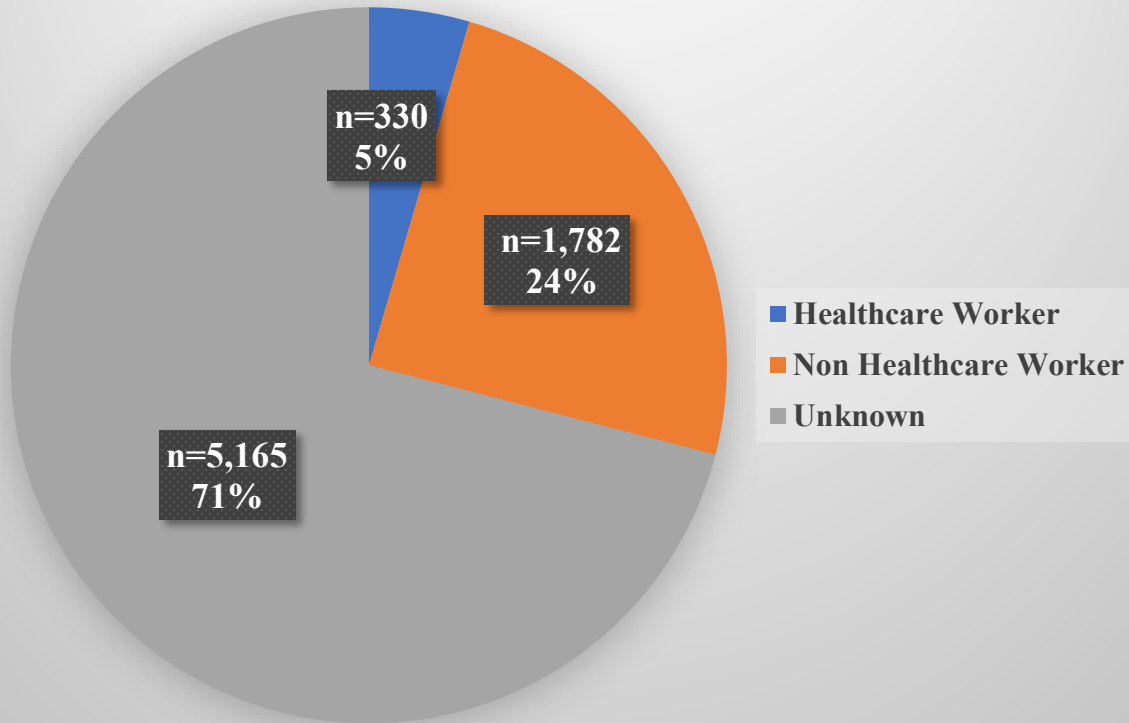


## Hospitalizations with Underlying Health Conditions

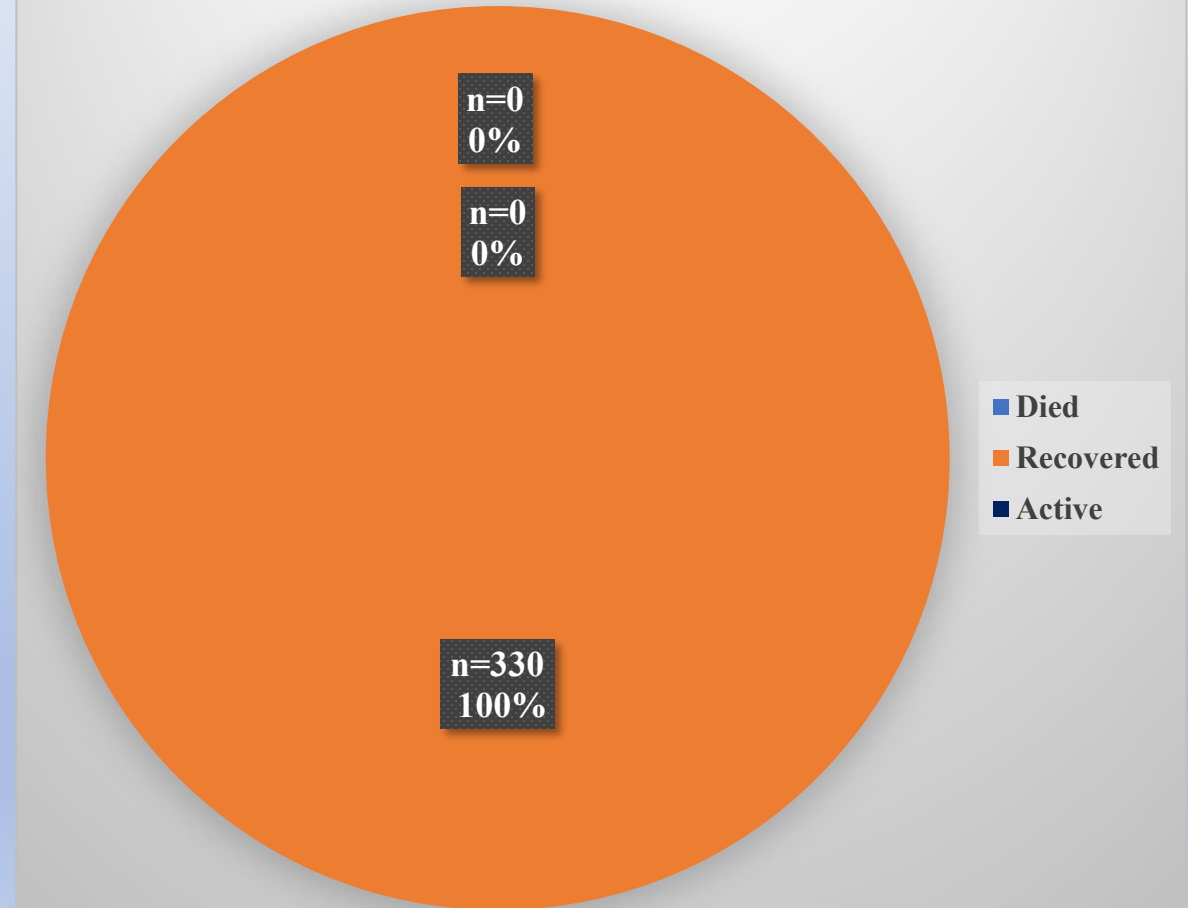


# COVID-19 – Peabody Cases & Outcomes - Healthcare Workers – 6/7/21

## Cases Among Healthcare Workers

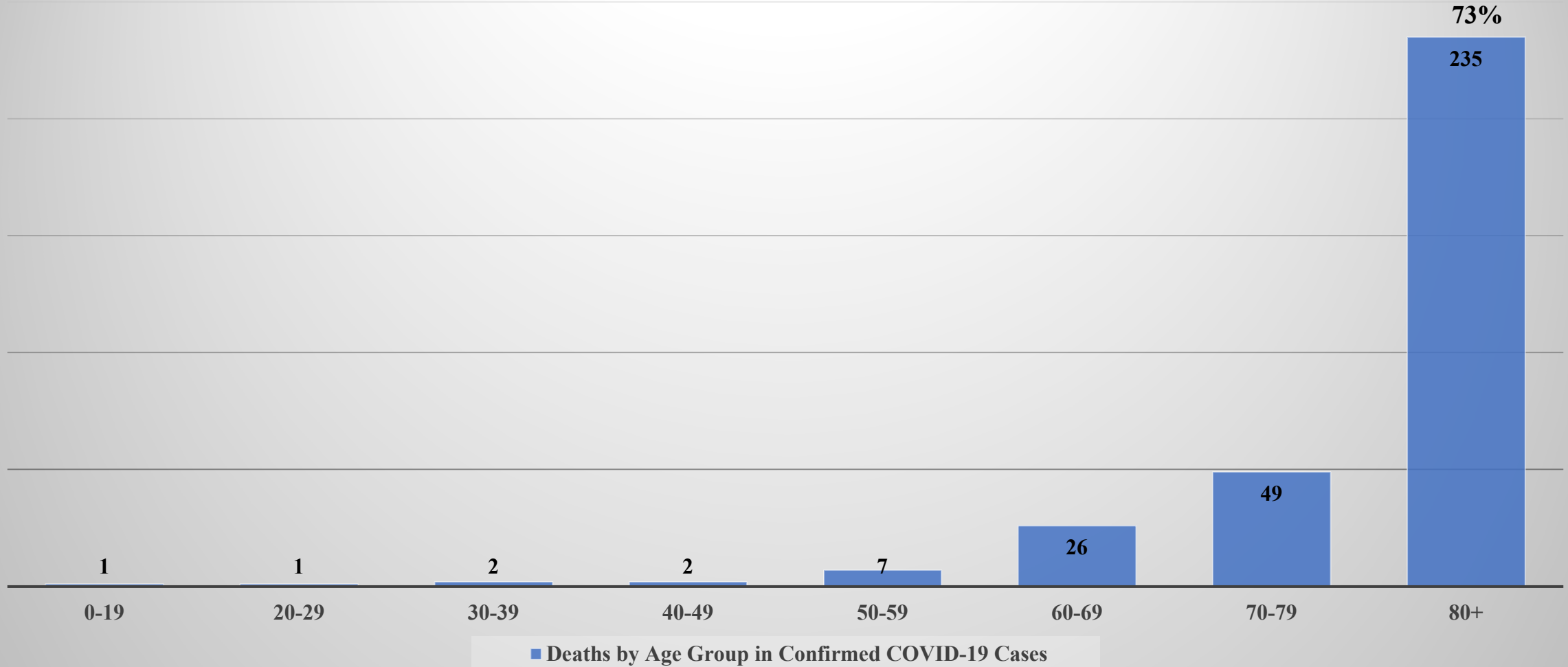


## Outcomes Among Healthcare Workers

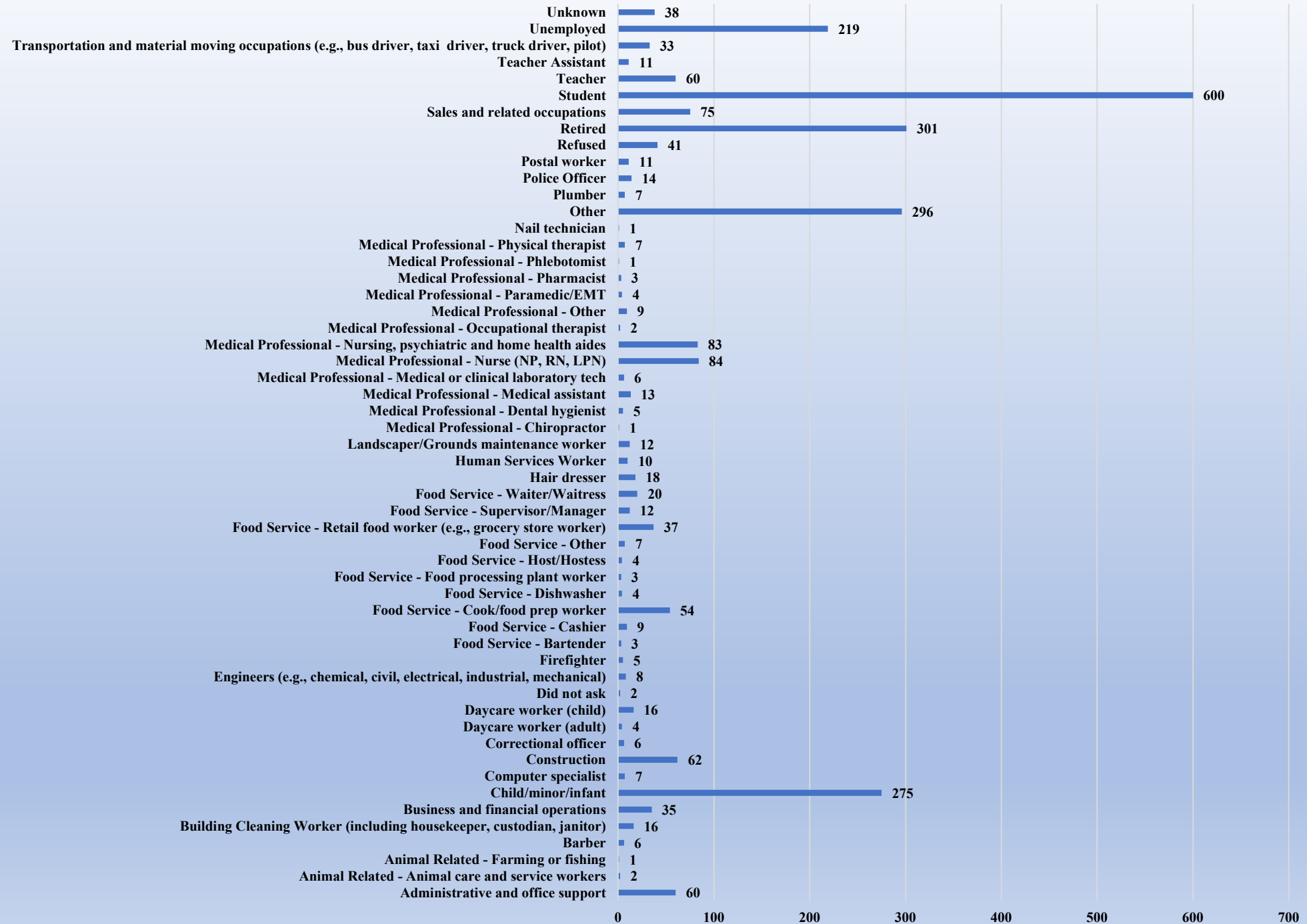


# COVID-19- Deaths by Age Group – 6/7/21

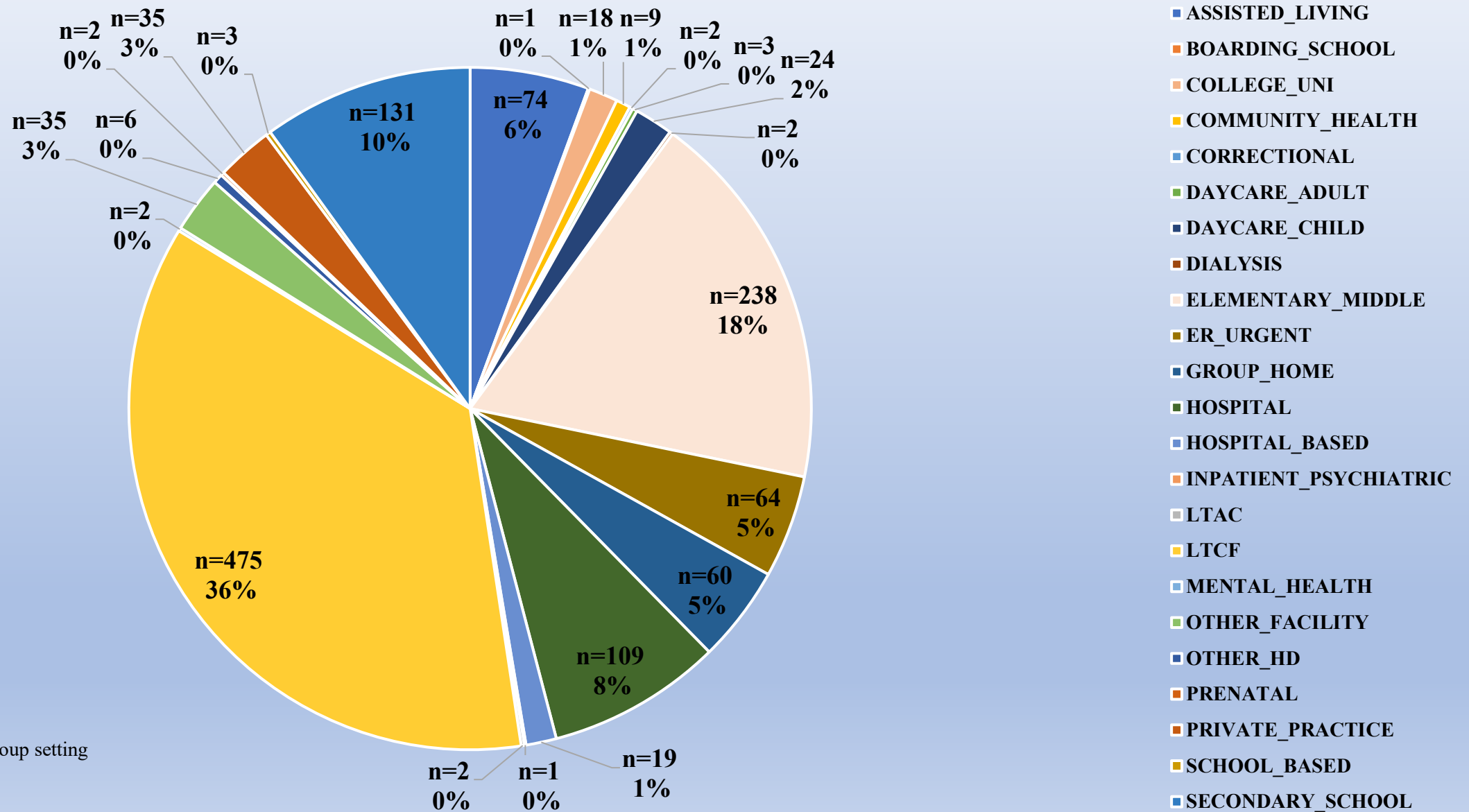
## Peabody Deaths by Age Group in Confirmed COVID-19 Cases



# Occupation Data September 1, 2020 to June 7, 2021



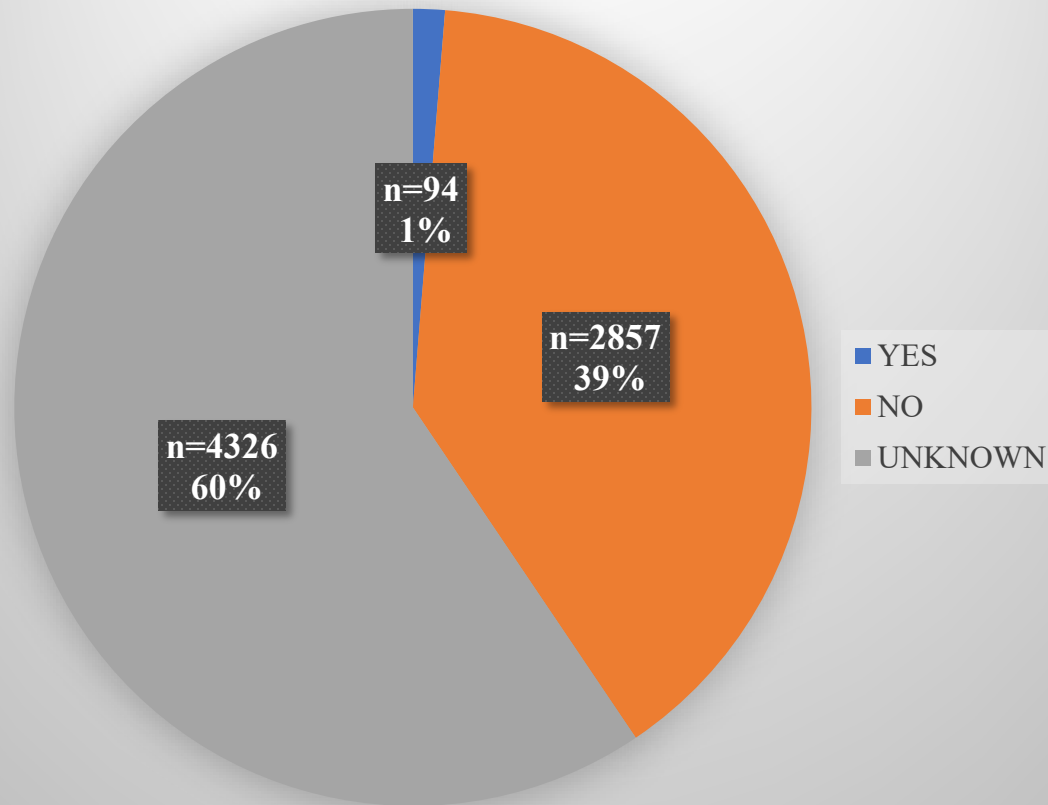
# Work/Participate in Group Setting September 1, 2020 to June 7, 2021



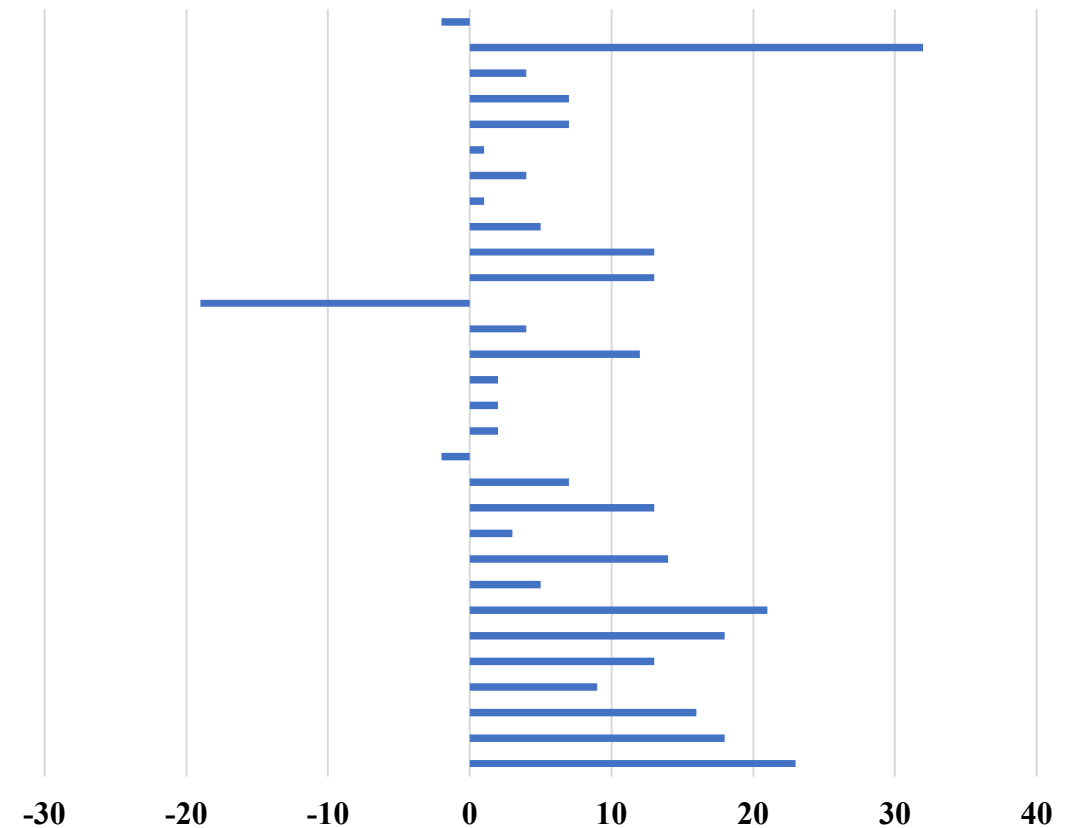
5,962 (82%) not in group setting

# Peabody Travel History 6/7/21

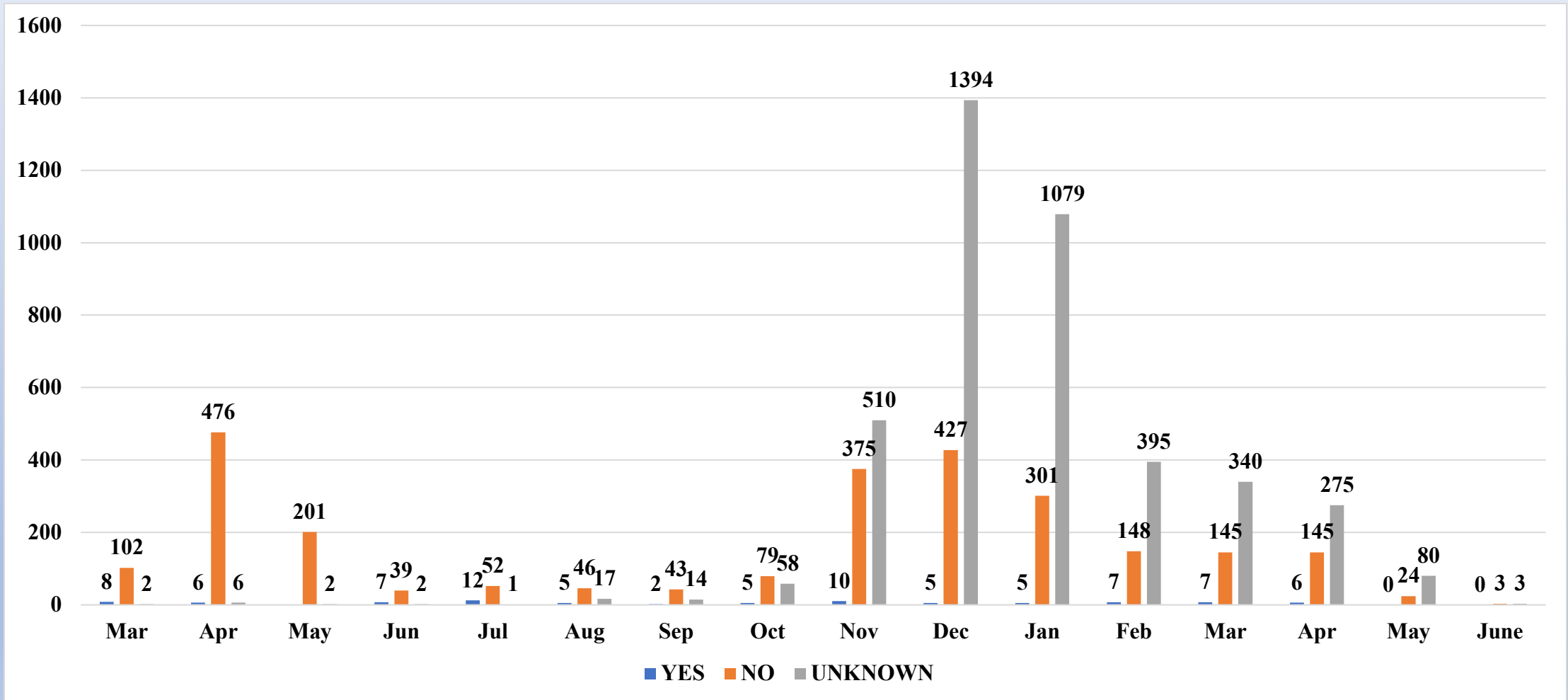
## Travel Before Symptom Onset



## Time Interval Between Travel and Symptom Onset

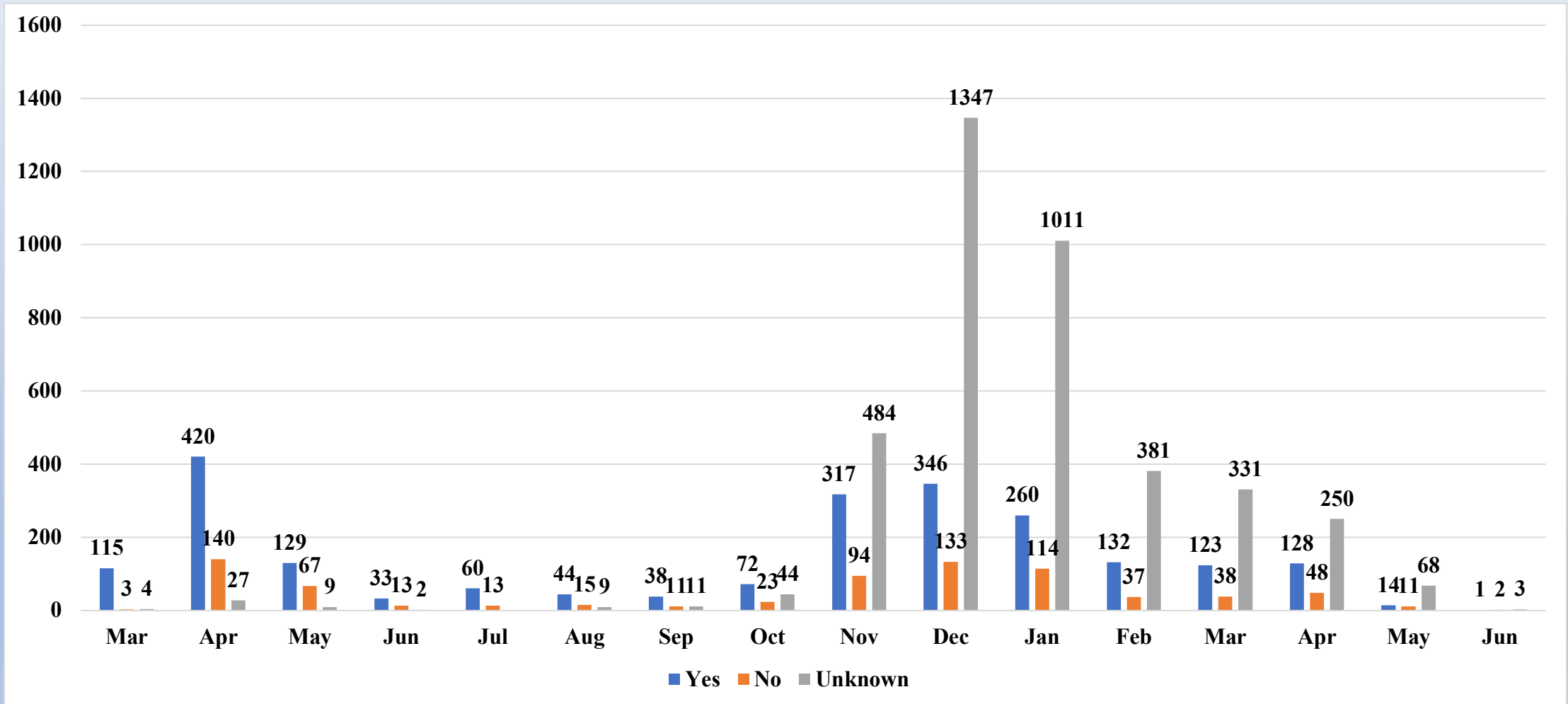


# Travel Before Symptom Onset by Month





# Peabody Symptomatic Cases by Month

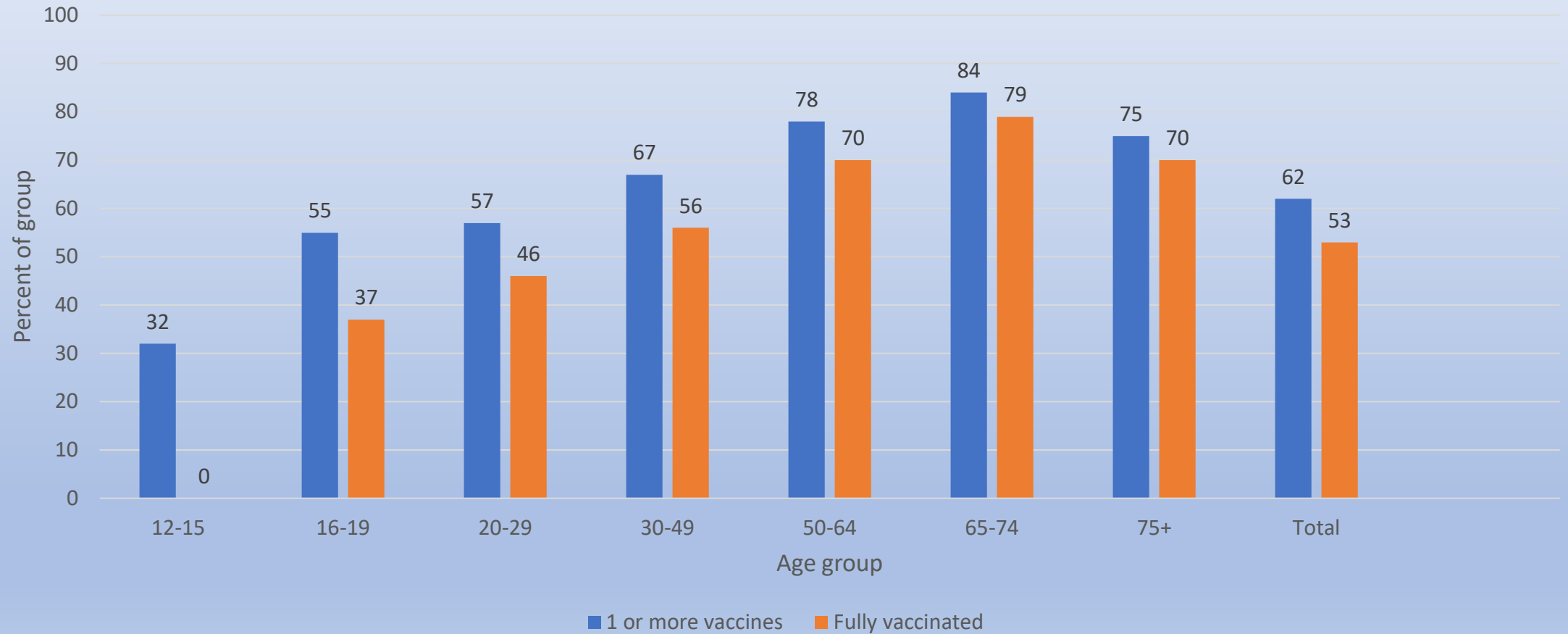


# Case Investigations for Peabody – 6/7/21

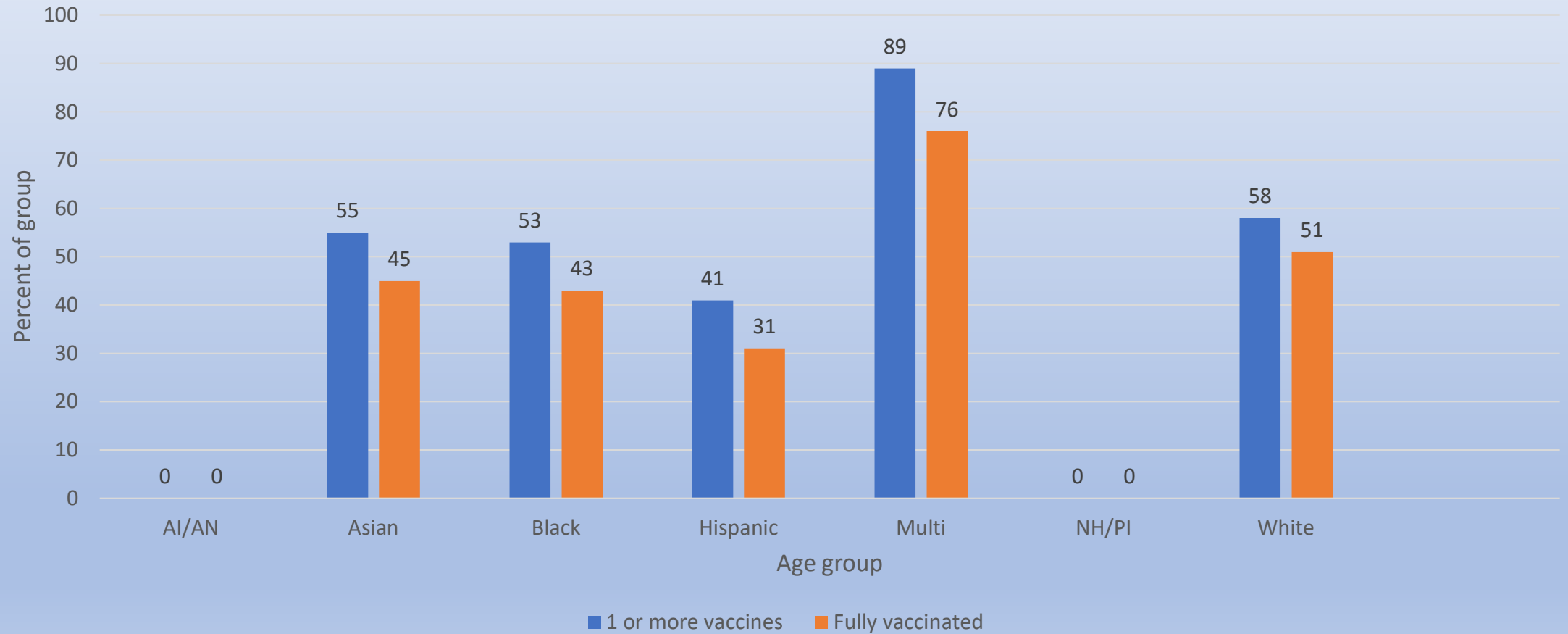
<b>Successfully Completed Investigations</b>	<b>LBOH – 3,083 CTC – 1,853 College University - 6</b>	<b>68%</b>
<b>Still Under Investigation</b>	<b>537</b>	<b>7%</b>
<b>Unable to complete Investigation</b>	<b>Total: 1,798 Lost to Follow up: 1,455 Other: 343</b>	<b>25%</b>

# Peabody residents vaccinated by age

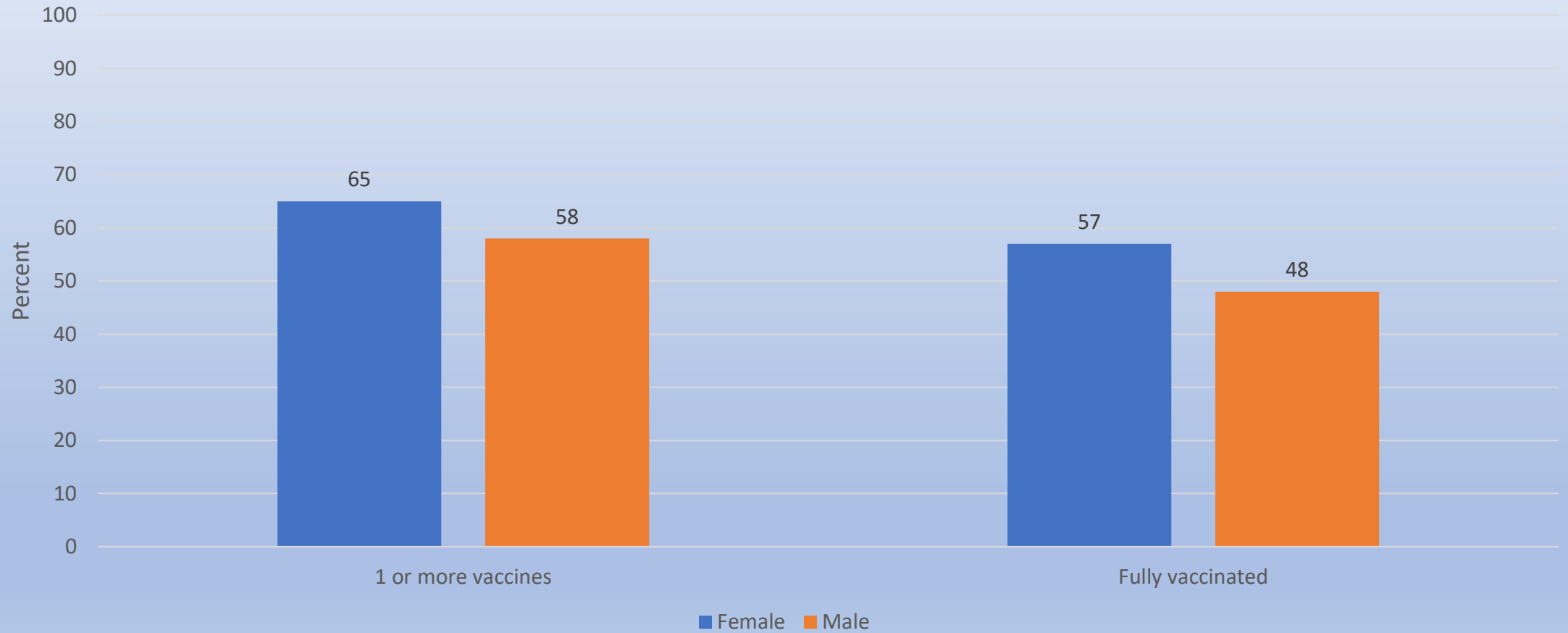
through 6/01/21



# Peabody residents vaccinated by race/ethnicity through 6/01/21



# % of Peabody residents vaccinated by gender through 6/01/21



# City of Peabody-sponsored vaccination clinics

through 6/09/21

- Total doses received: 2710
- Total doses distributed: 2802
  - First doses: 1417
  - Second doses: 1385
- Number of clinics held: 33