



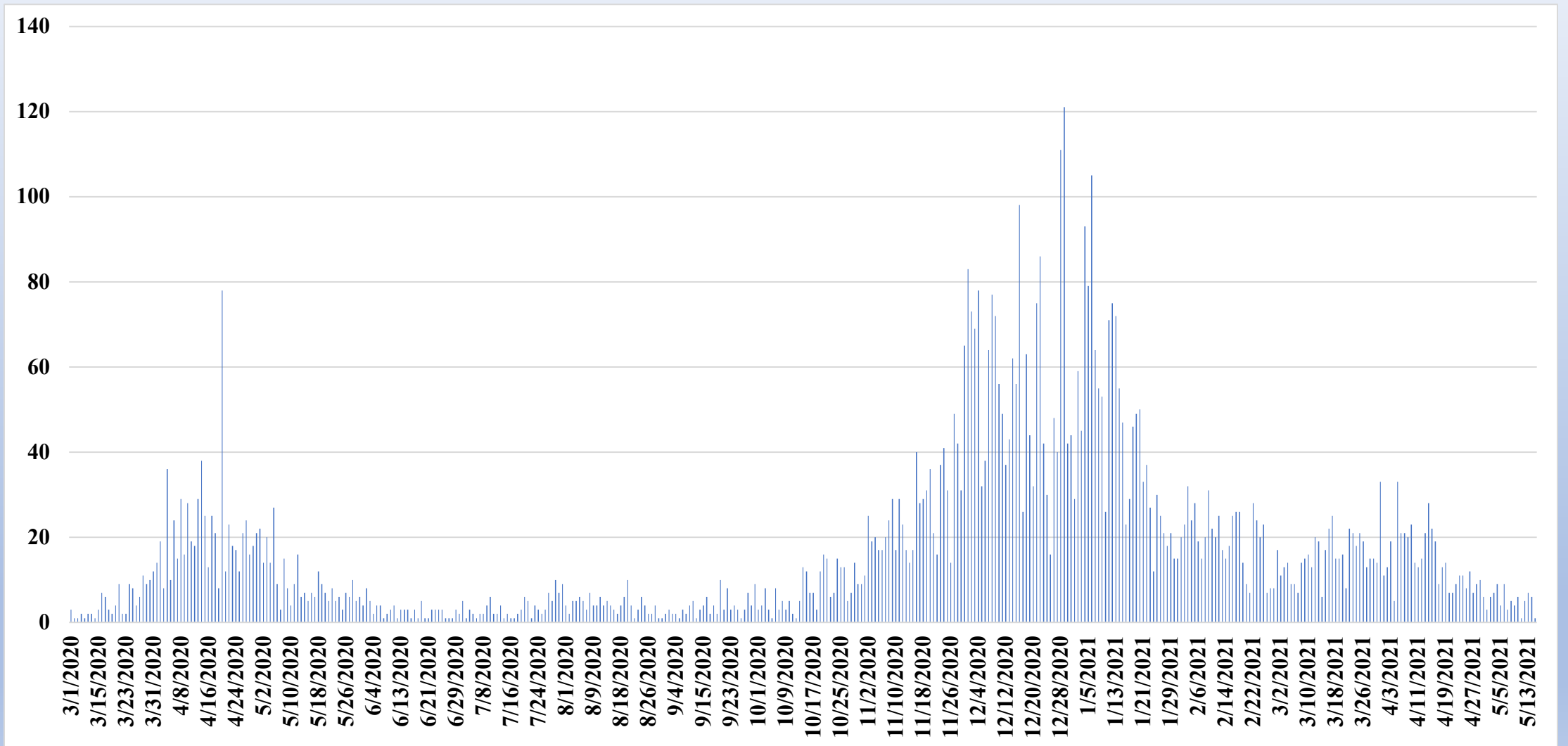
City of Peabody COVID-19 Stats

5/17/21

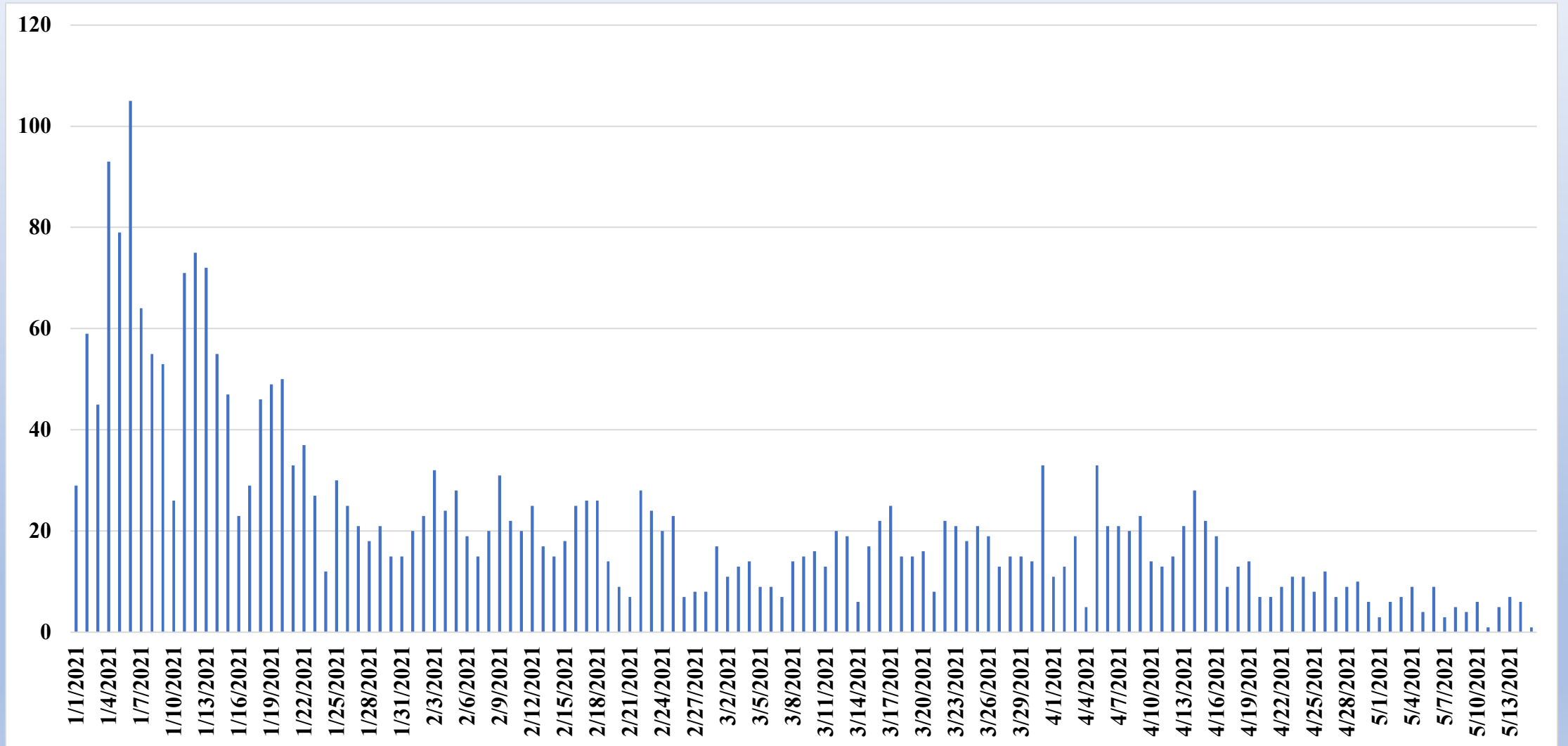


Total cases 7245	Cases in Last 14 days 85 ↓	Average new daily cases per 100K residents in last 14 days 10.8 ↓
Total tests 138,531	Tests in last 14 days 5344 ↓	Percent positivity in last 14 days 2.00% ↓
Vaccines in last 14 days 2,202 ↓	Percent 1 or more doses 57% ↑	Percent fully vaccinated 46% ↑

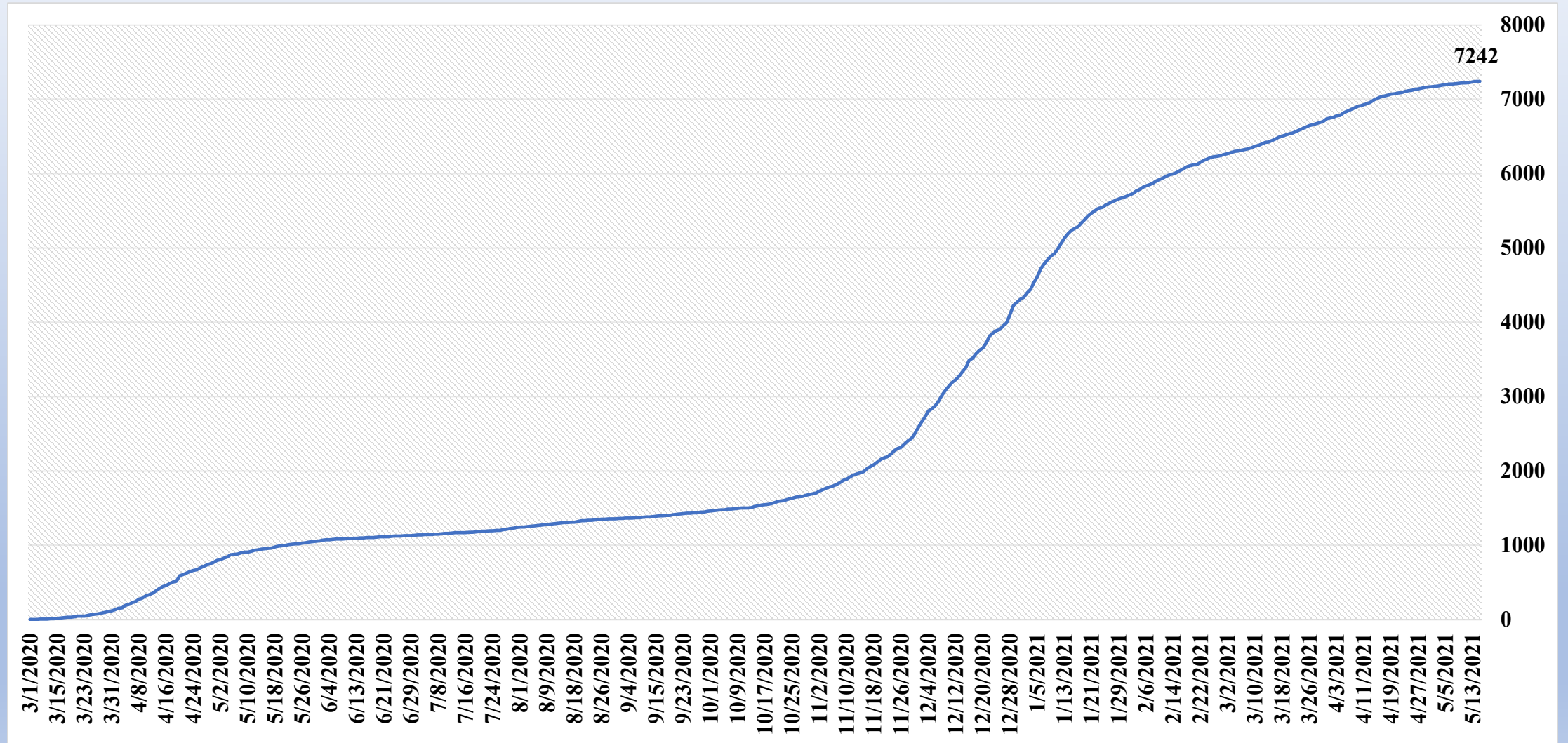
Peabody Daily Confirmed Cases by Date– 5/17/21



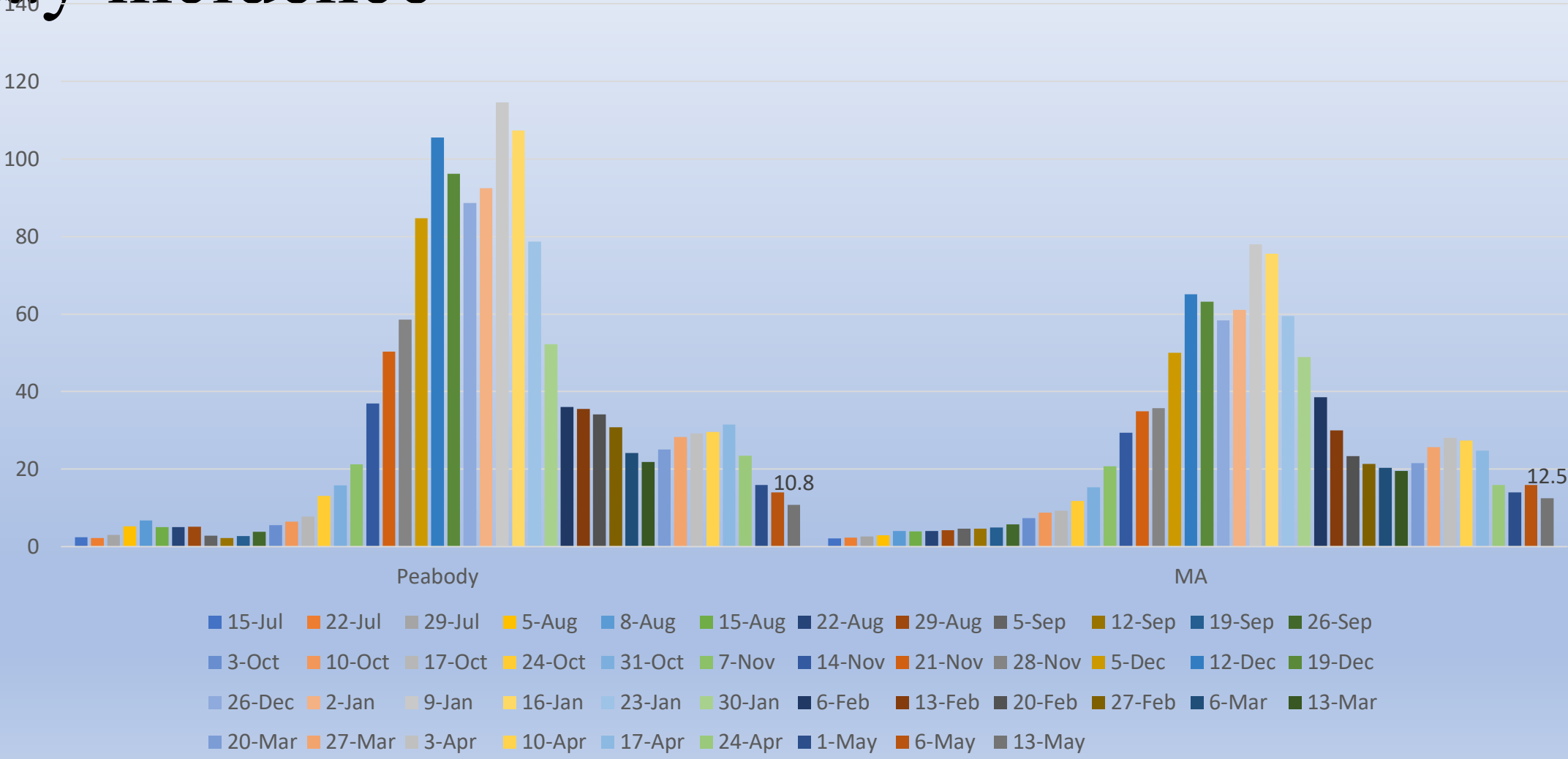
Peabody Daily Confirmed Cases by Date– 1/1/21 to 5/17/21



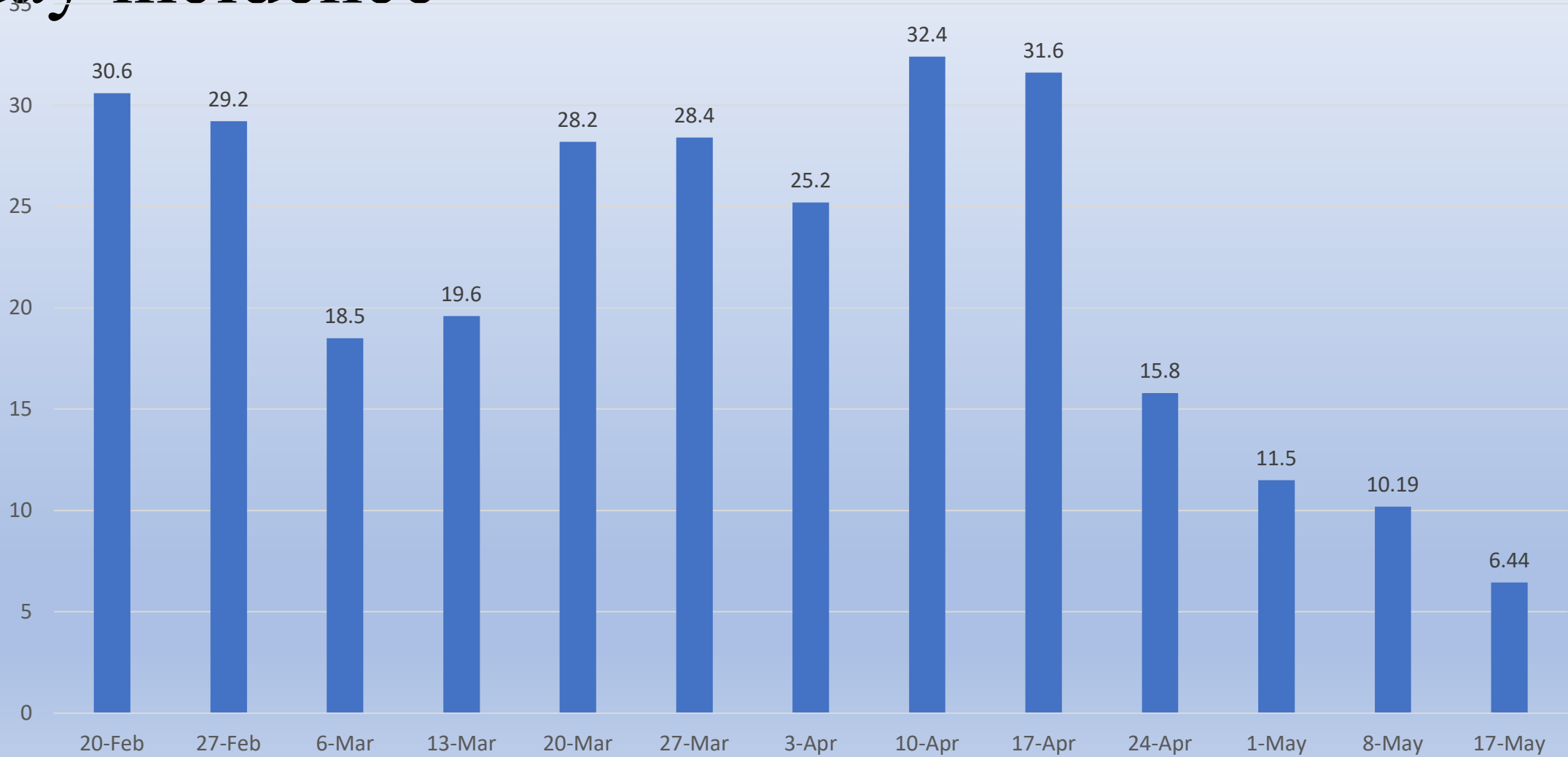
Peabody Cumulative Confirmed Cases by Date – 5/17/21



Peabody - Average new daily case rate – 14 day incidence

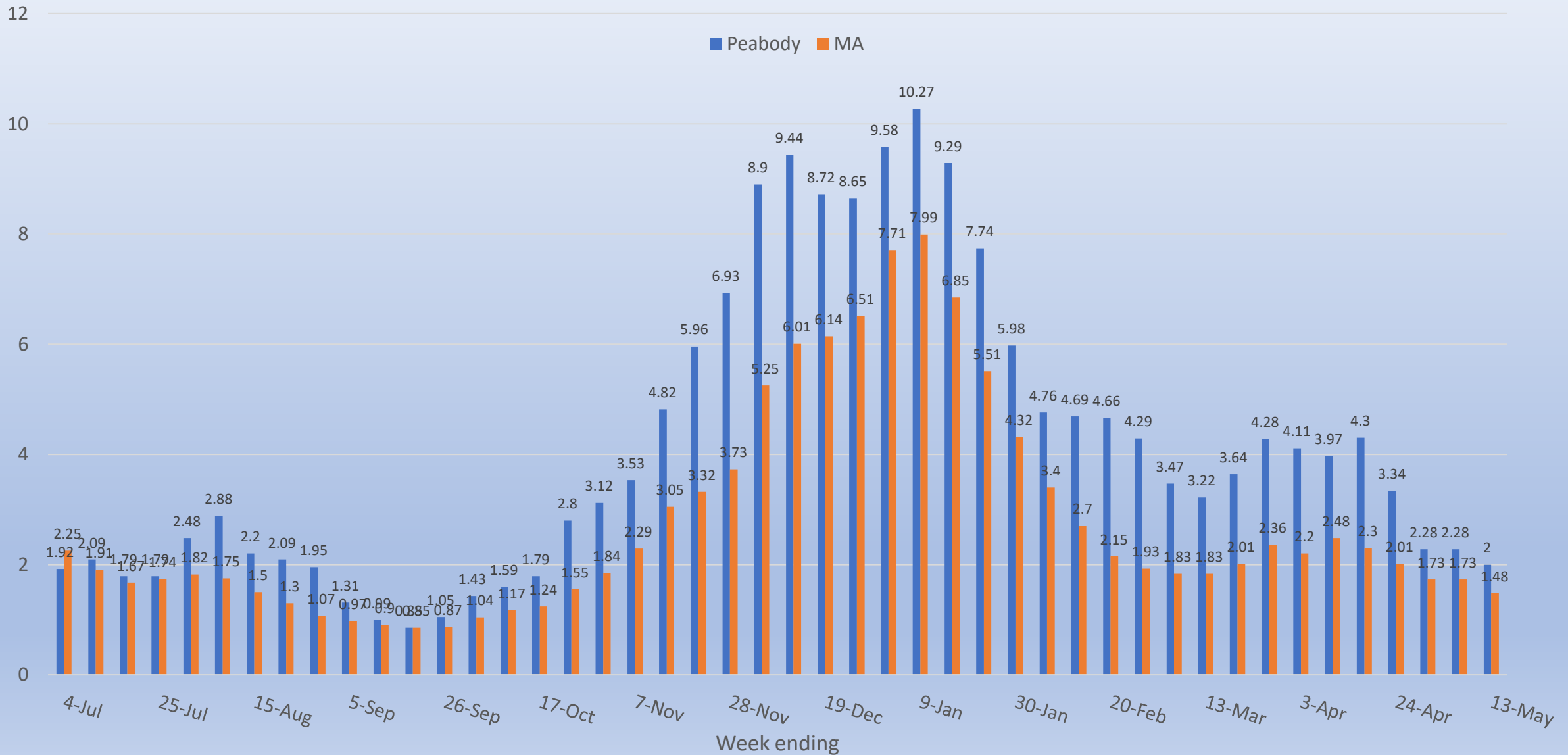


Peabody - Average new daily case rate – 7 day incidence



Peabody population 53,092

Percent Positivity, past 14 days

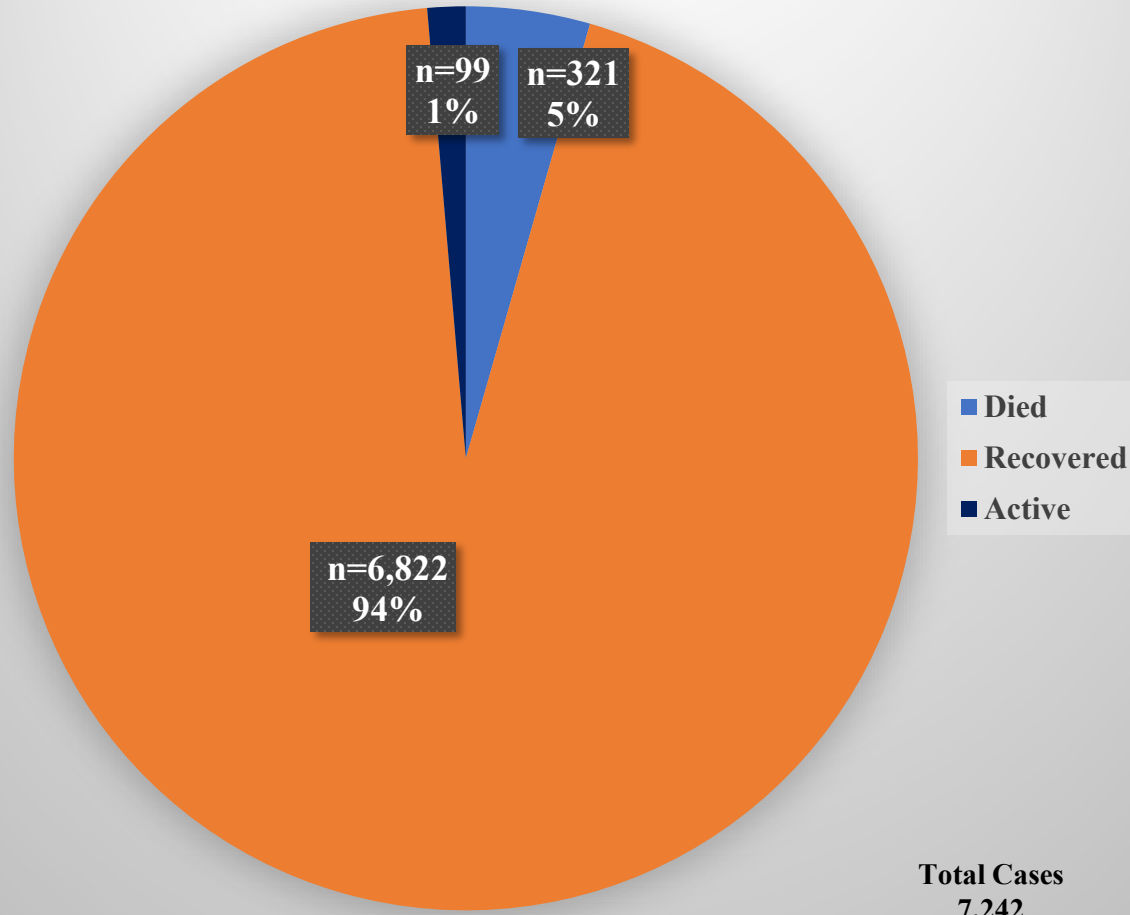


Count and Rate (per 100,000) of Confirmed COVID-19 Cases and Persons Tested

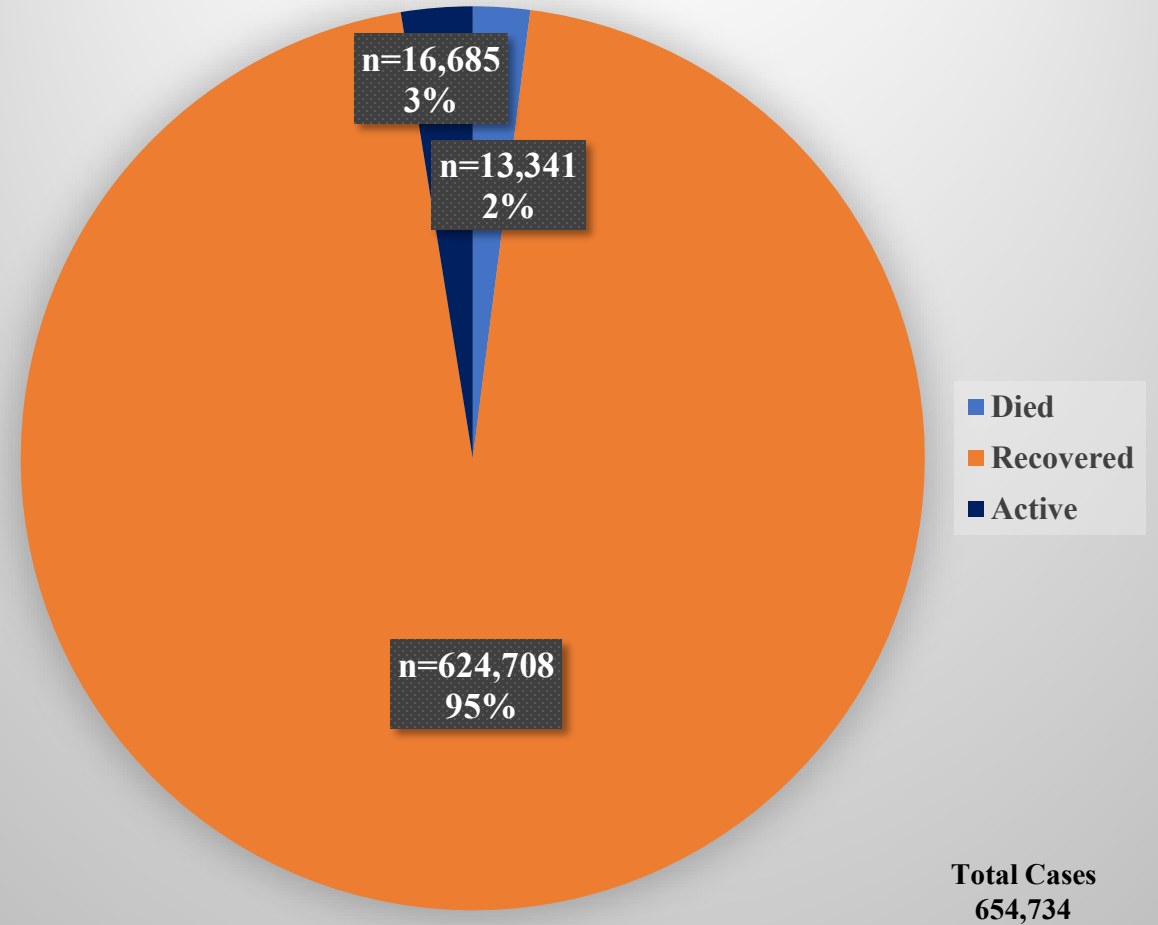
	Total Case Count	Case Count (Last 14 Days)	Average Daily Incidence Rate per 100,000 (Last 14 days)	Total Tests (Last 14 days)	Percent Positivity (Last 14 Days)
Peabody	6,809	85	10.8	5,344	(2.00%)
Massachusetts State Total	657,119	12,199	12.5	13,985 per 100,000	(1.48%)

COVID-19 – Outcomes – 5/17/21

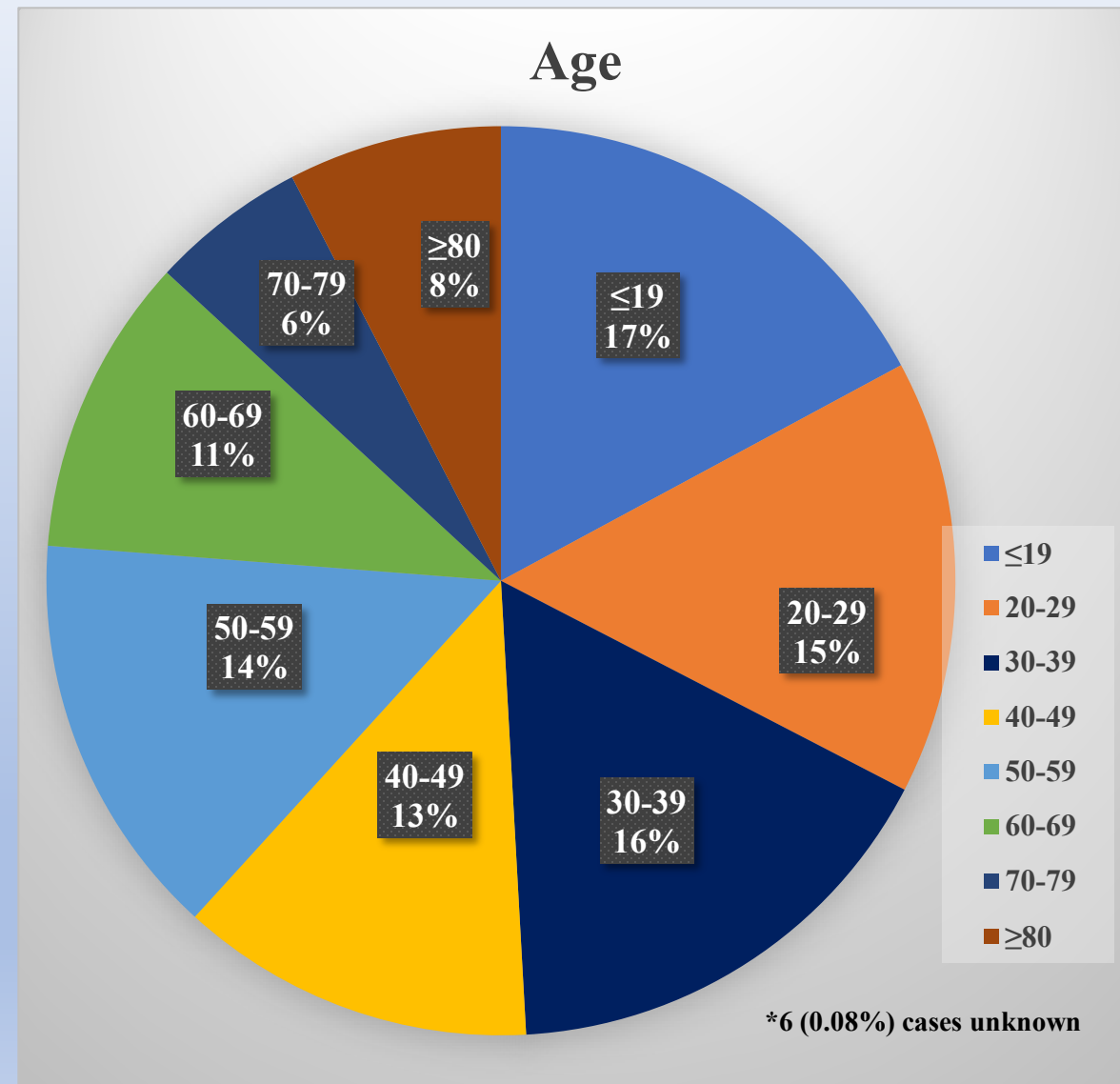
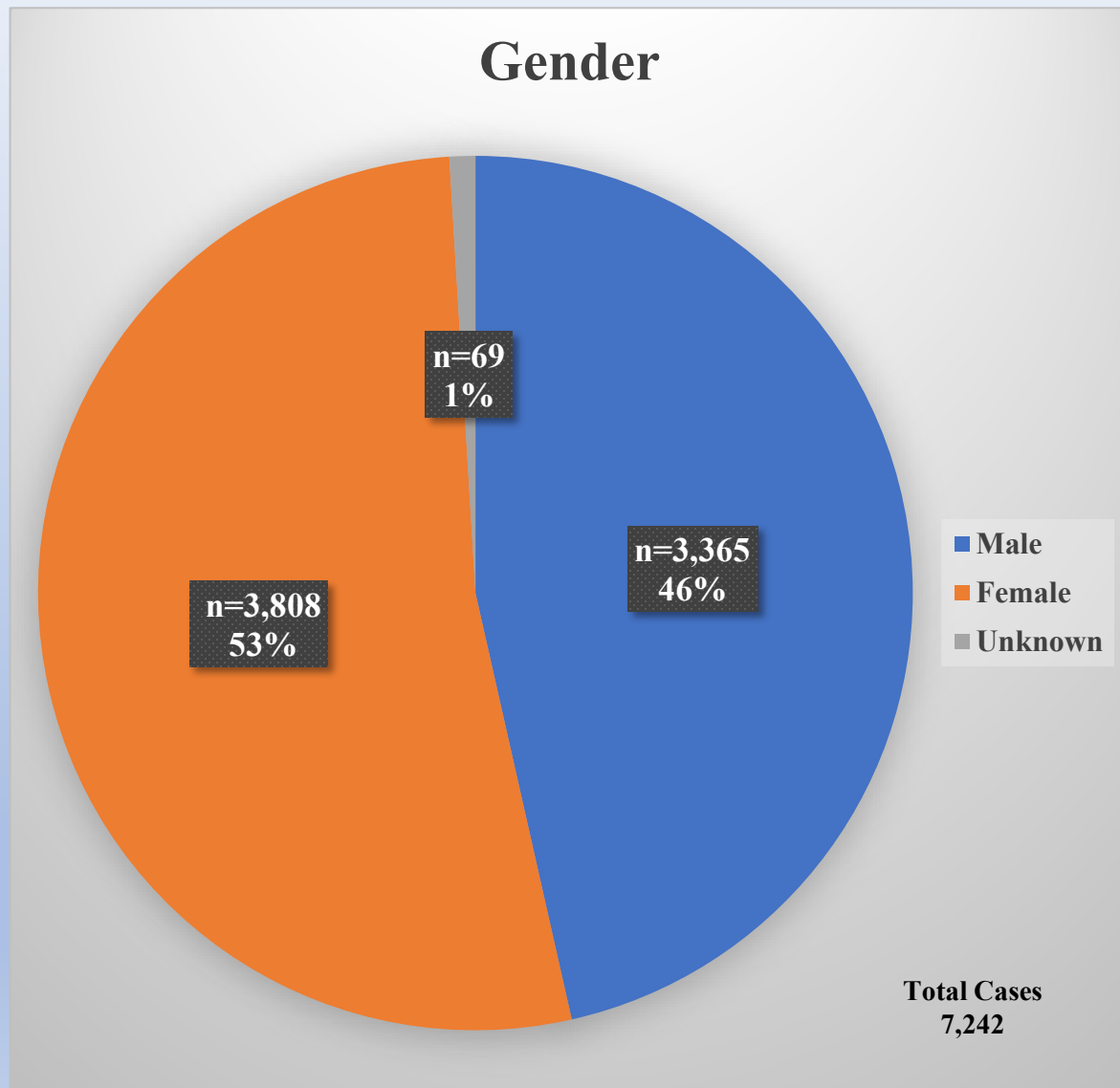
Peabody



Massachusetts

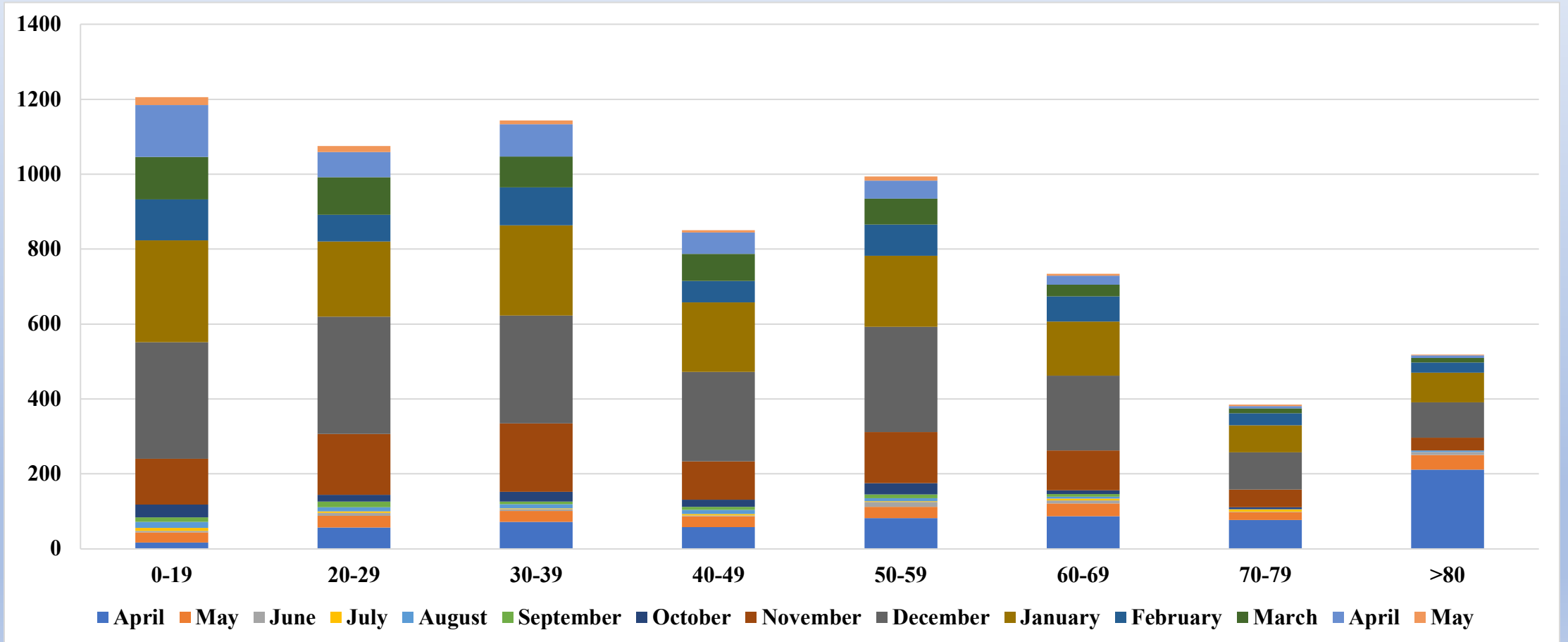


COVID-19 – Peabody Cases by Gender & Age– 5/17/21

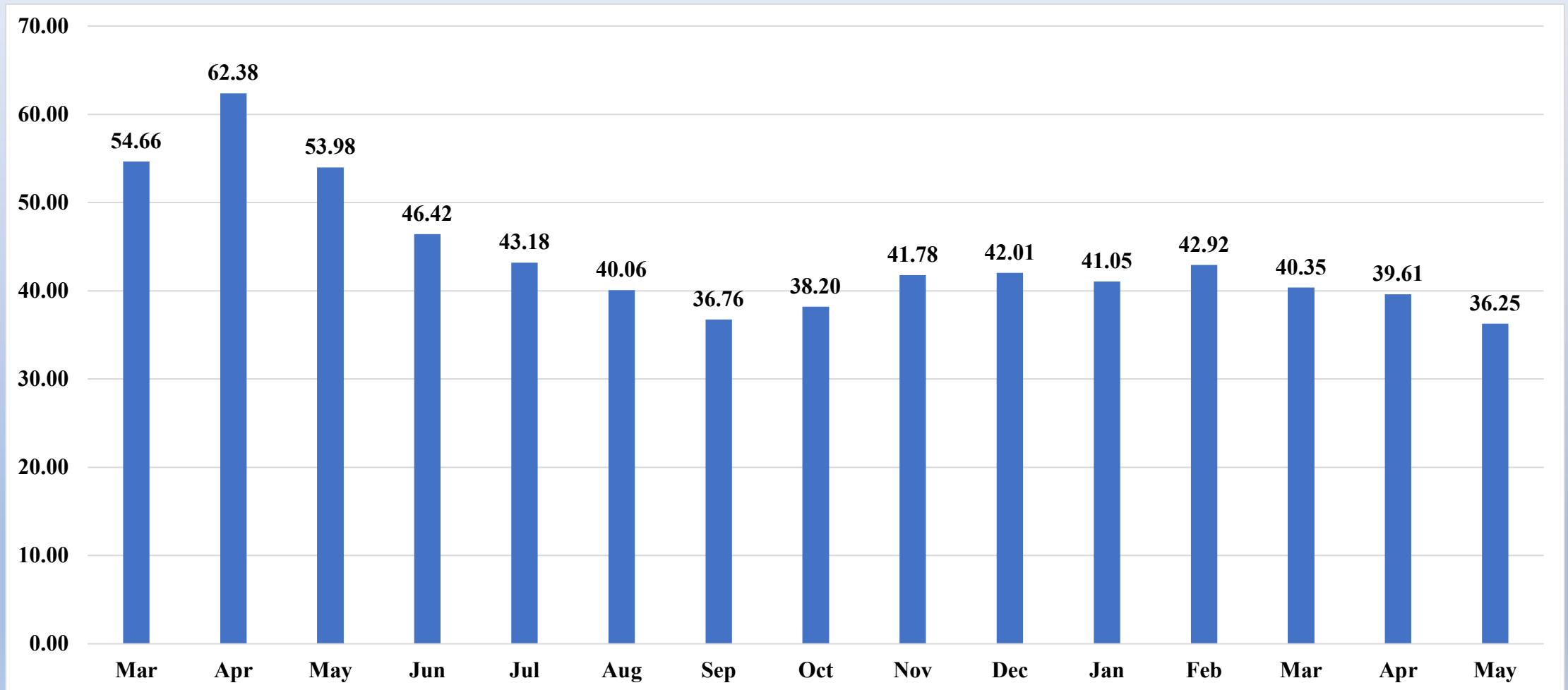


Peabody COVID-19 Cases by Age Range

April 1, 2020 to May 17, 2021

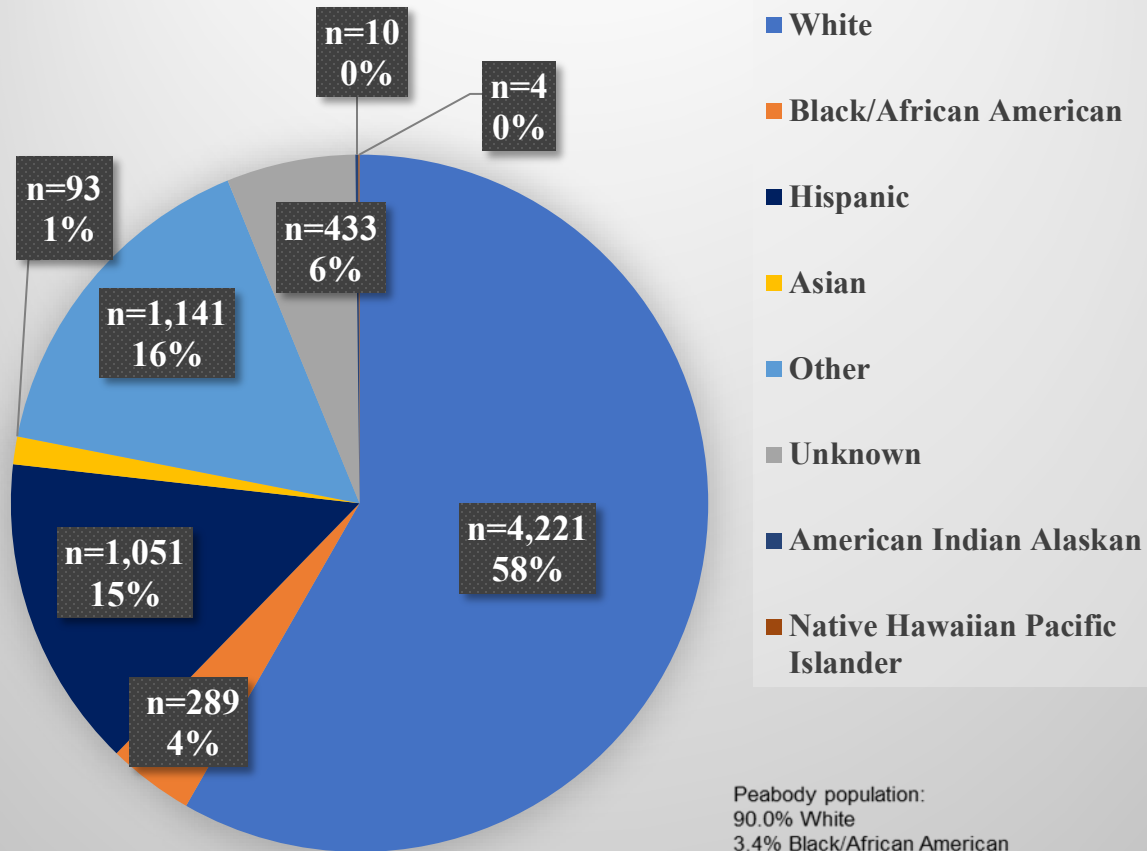


Peabody Median Age of Cases By Month



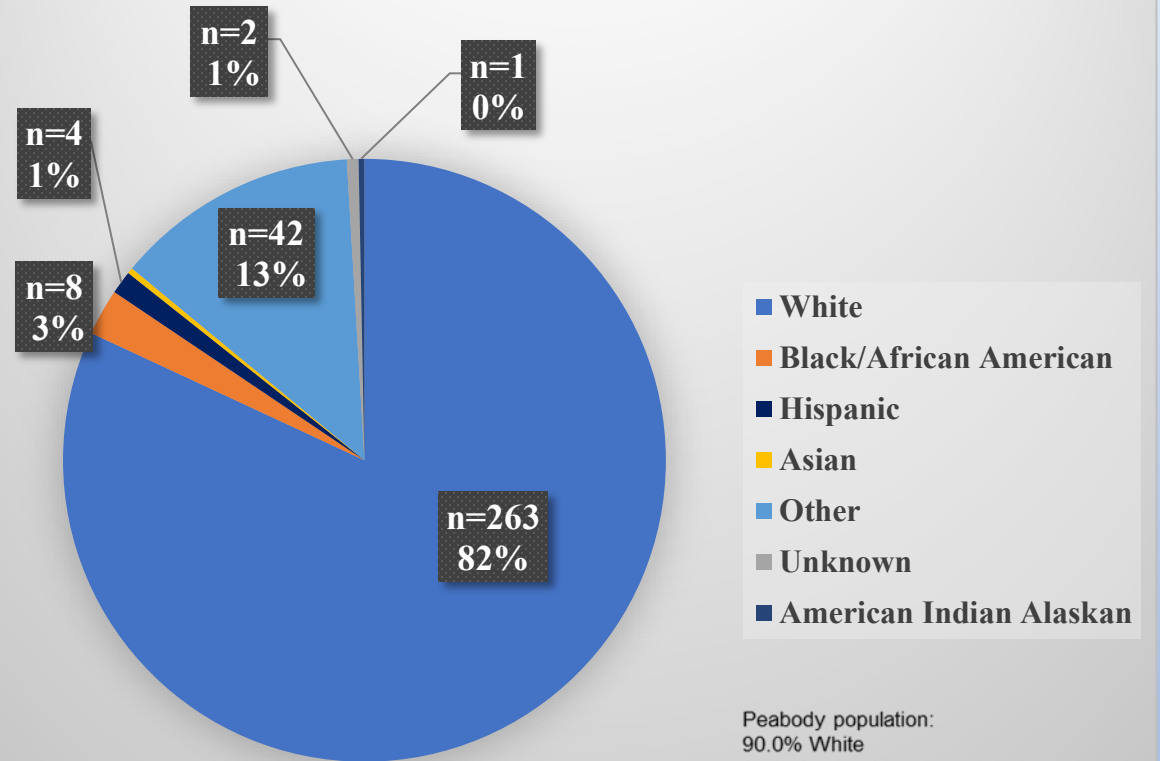
Peabody COVID-19 – Cases by Race/Ethnicity – 5/17/21

Cases by Race/Ethnicity



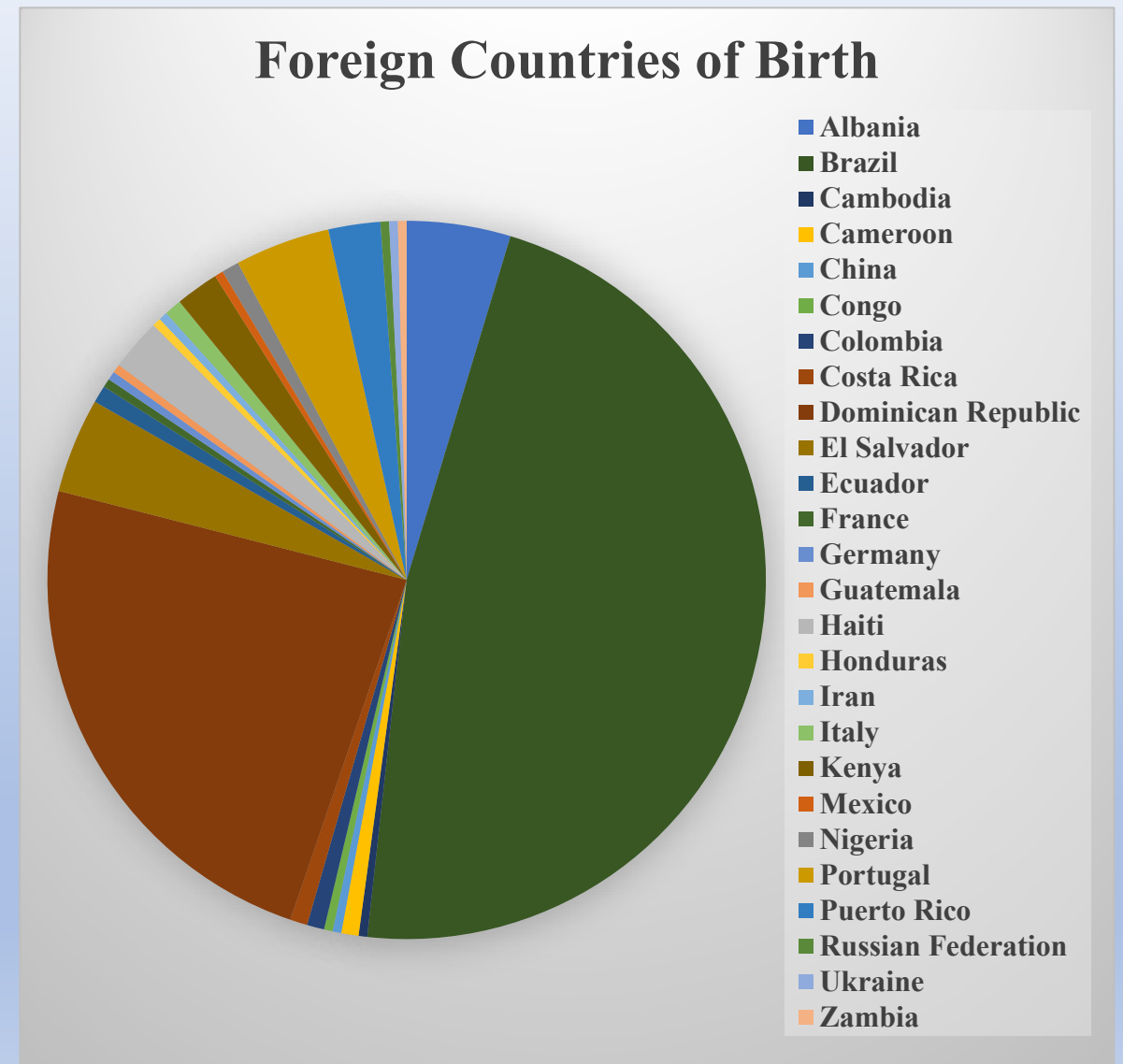
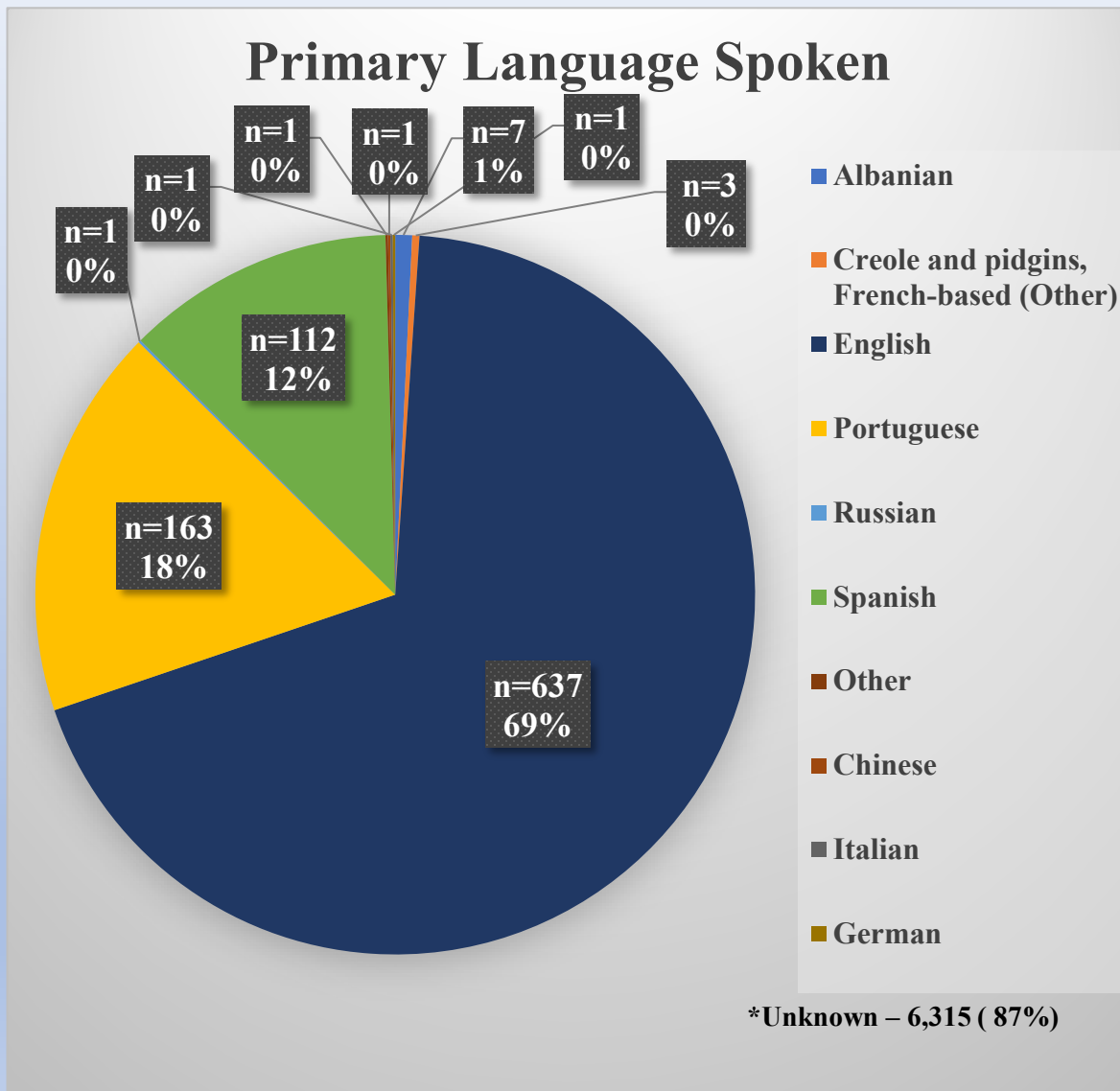
Peabody population:
 90.0% White
 3.4% Black/African American
 0.3% American Indian/Alaska Native
 1.0% Asian
 0.0% Native Hawaiian/Pacific Islander
 2.6% Two or More Races
 10.4% Hispanic or Latino

Deaths by Race/Ethnicity



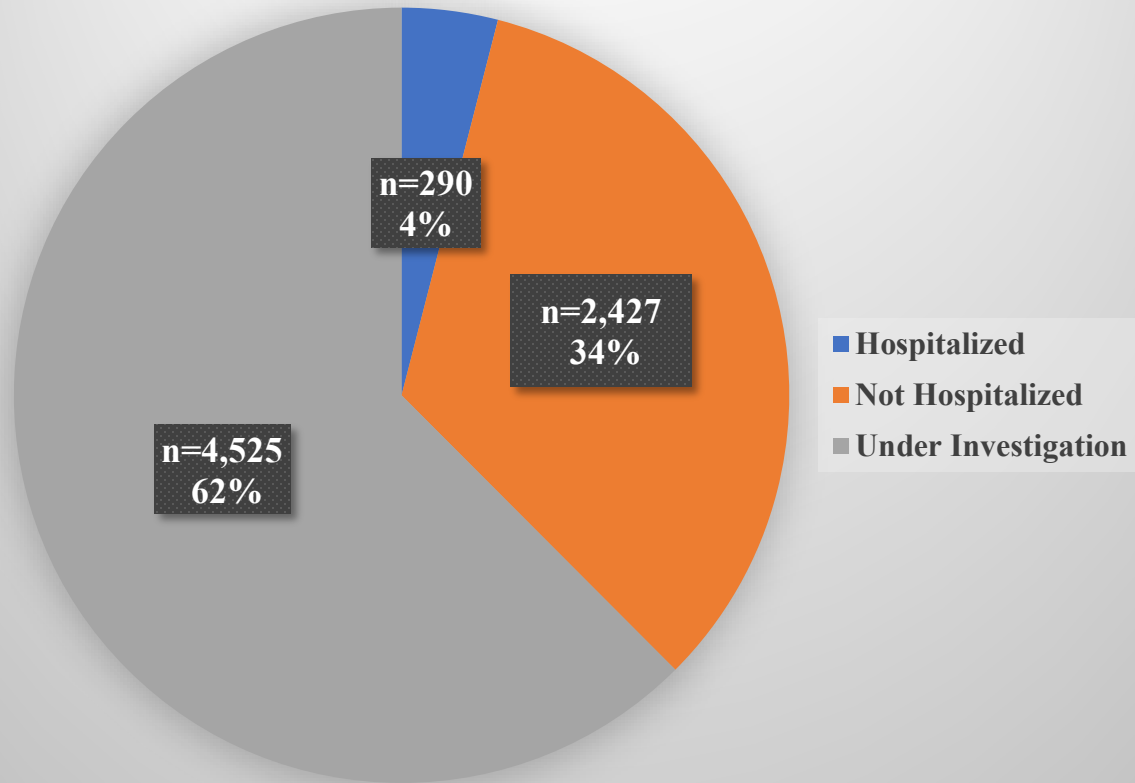
Peabody population:
 90.0% White
 3.4% Black/African American
 0.3% American Indian/Alaska Native
 1.0% Asian
 0.0% Native Hawaiian/Pacific Islander
 2.6% Two or More Races
 10.4% Hispanic or Latino

COVID-19 – Peabody Cases by Primary Language – 5/17/21

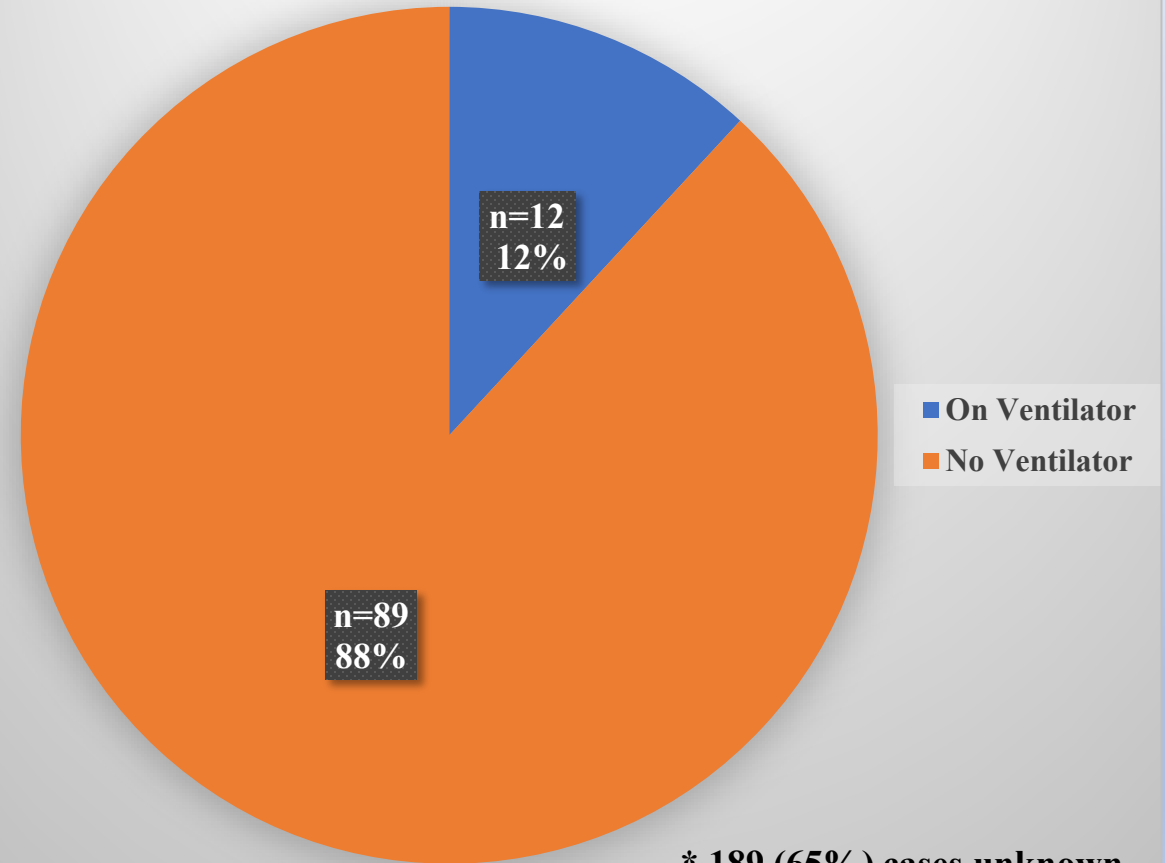


COVID-19 – Peabody Hospitalizations – 5/17/21

Number of Hospitalizations

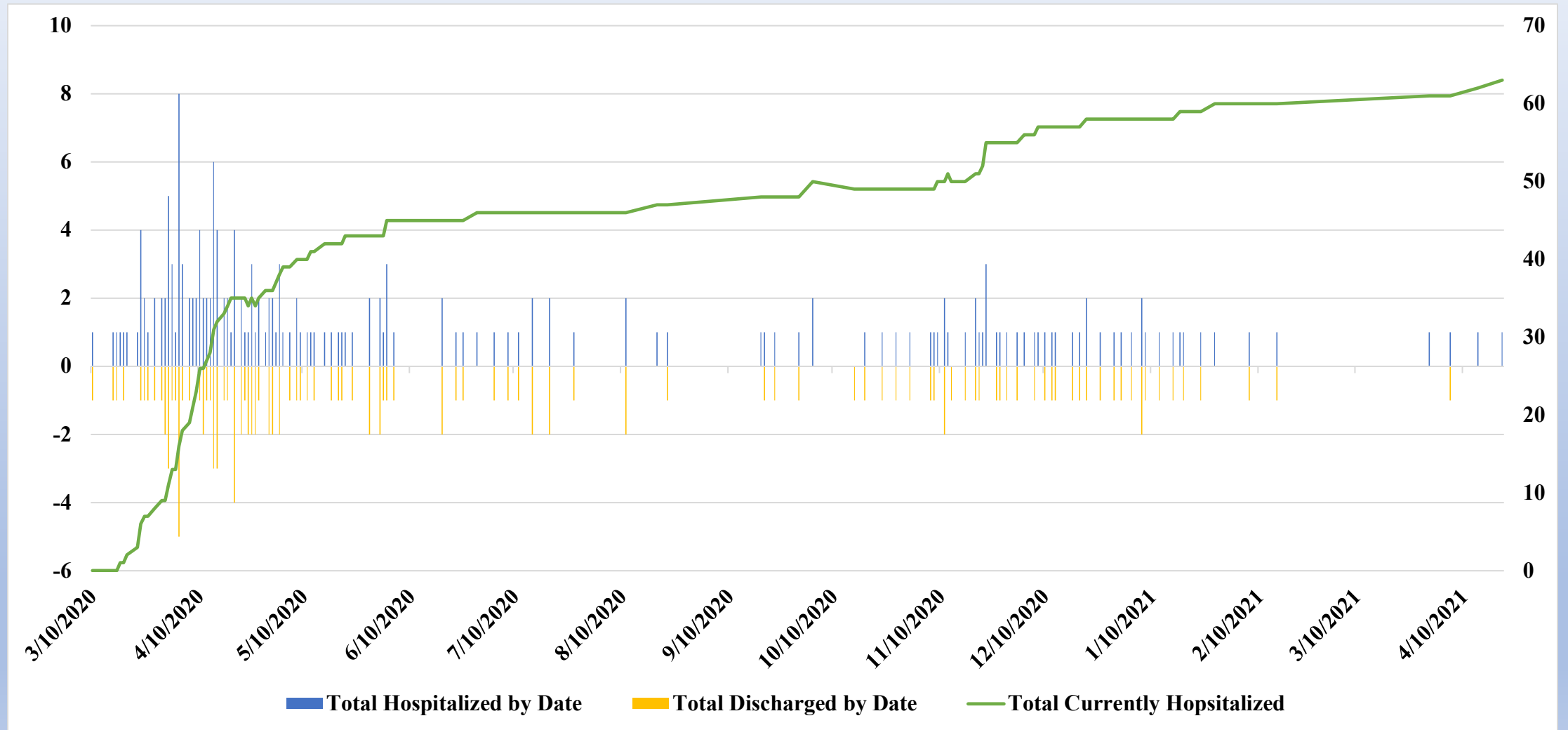


Hospitalizations Needing Ventilator



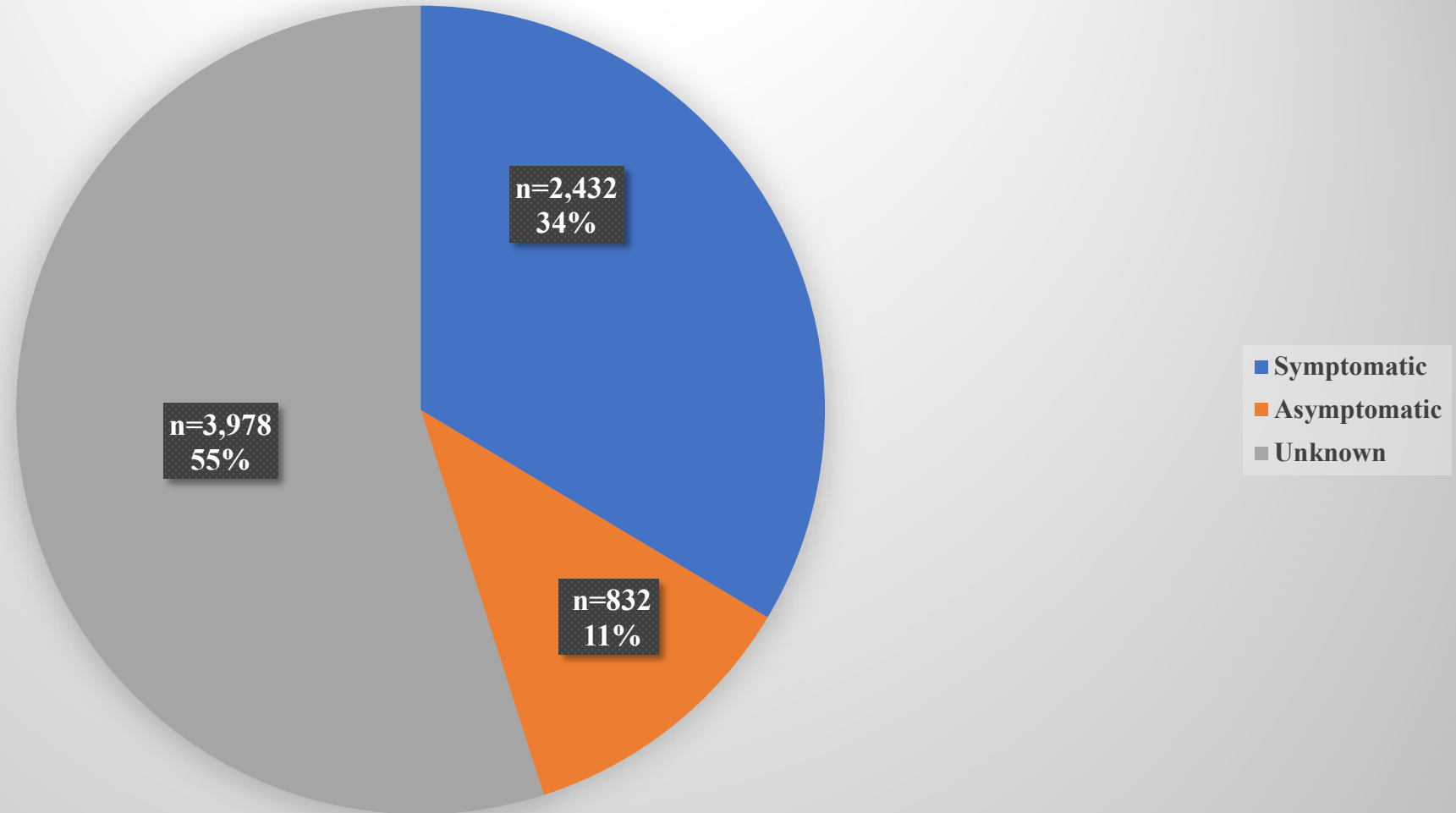
* 189 (65%) cases unknown

Peabody Daily and Cumulative COVID-19 Hospitalizations – 5/17/21



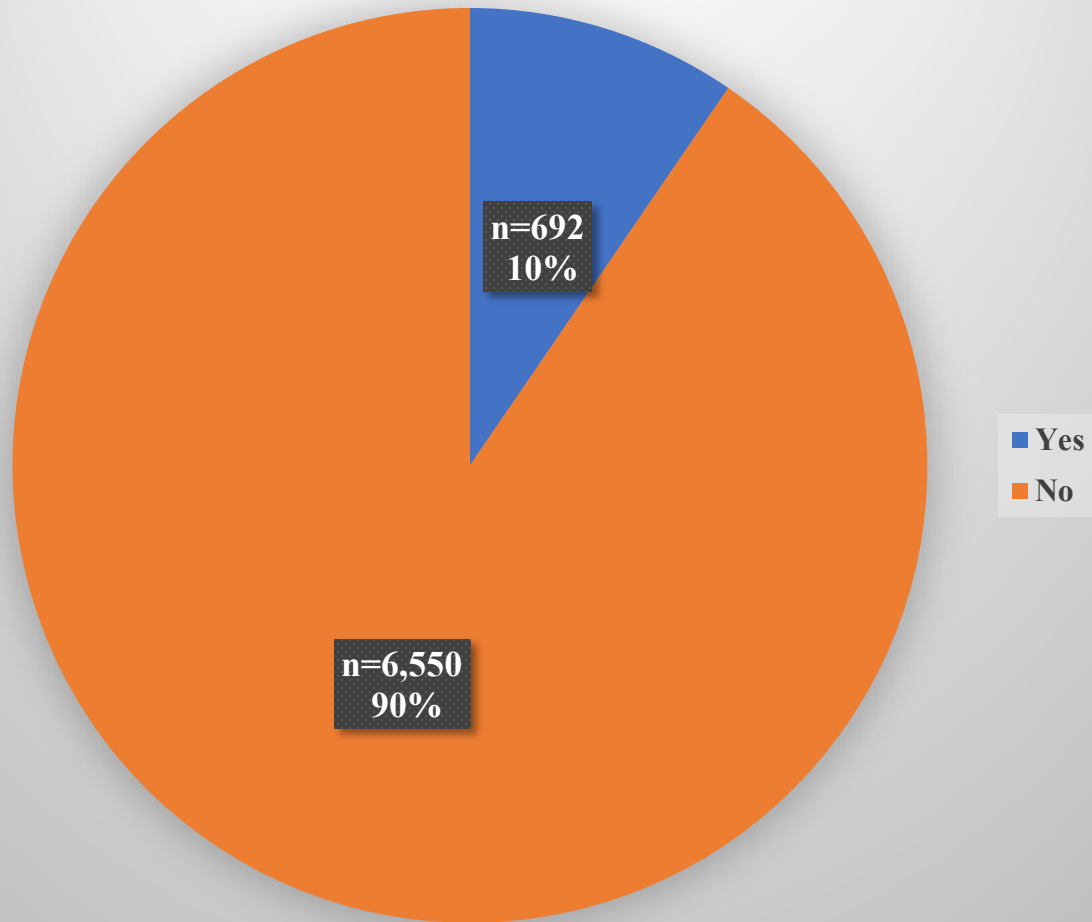
COVID-19 – Peabody Cases with Symptoms– 5/17/21

Cases With Symptoms

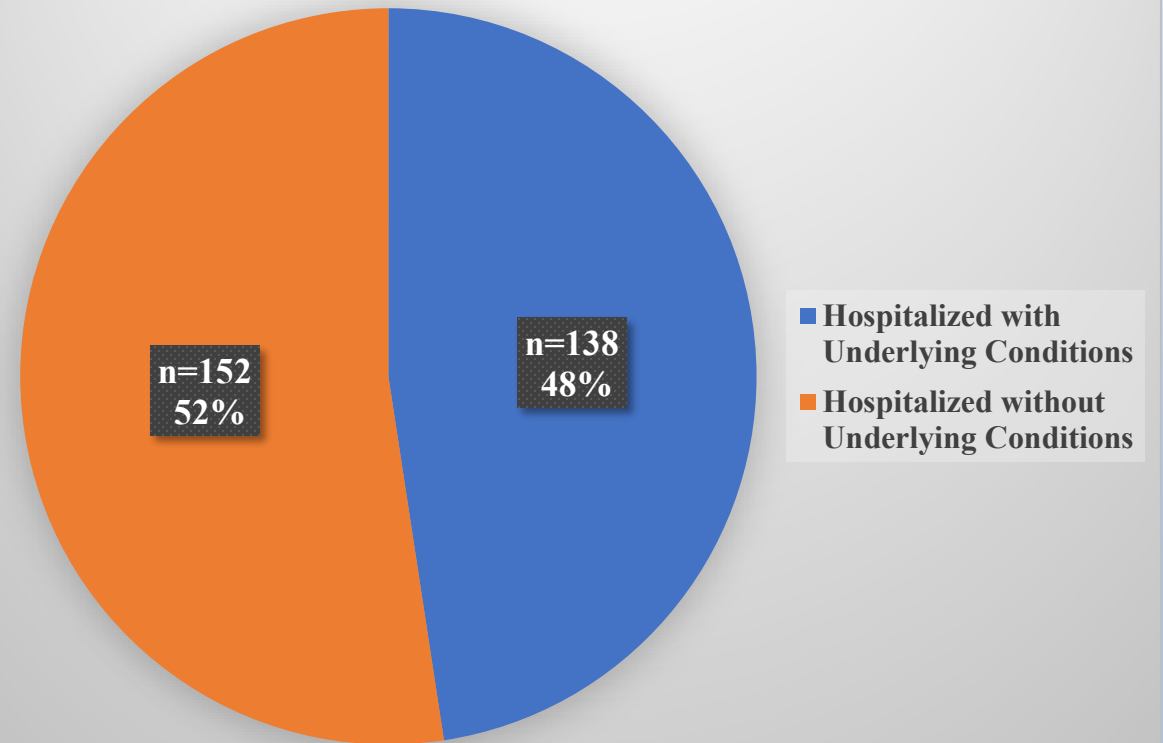


Peabody COVID-19 – Underlying Health Conditions – 5/17/21

Cases with Underlying Health Conditions

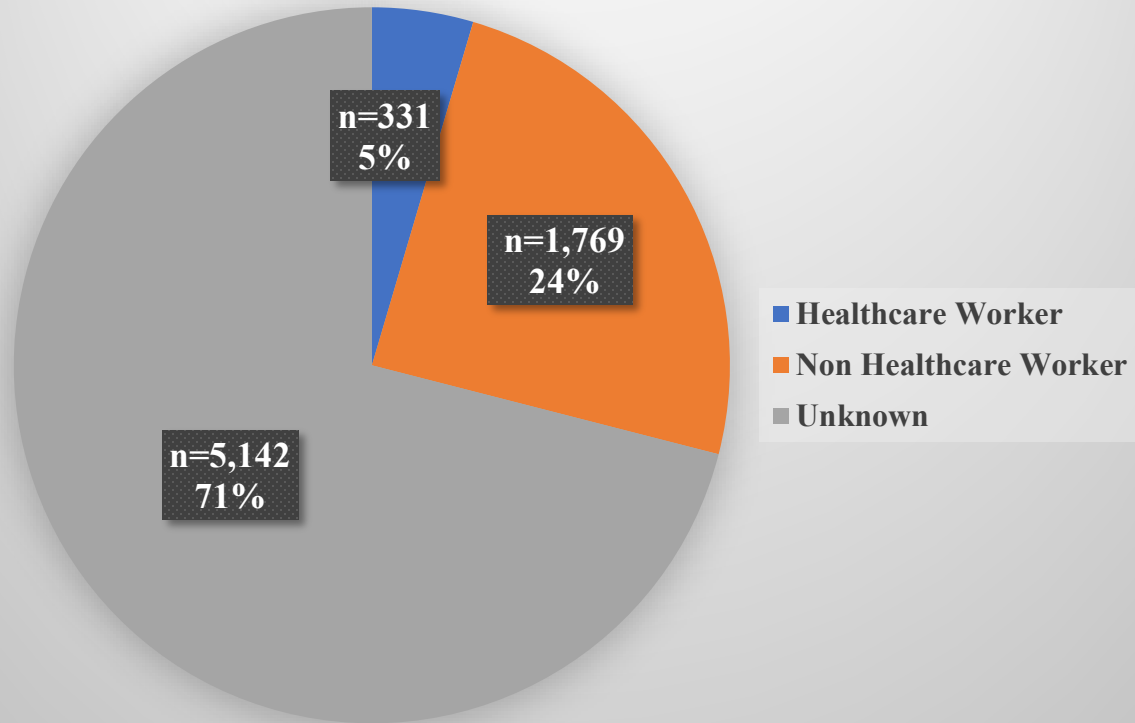


Hospitalizations with Underlying Health Conditions

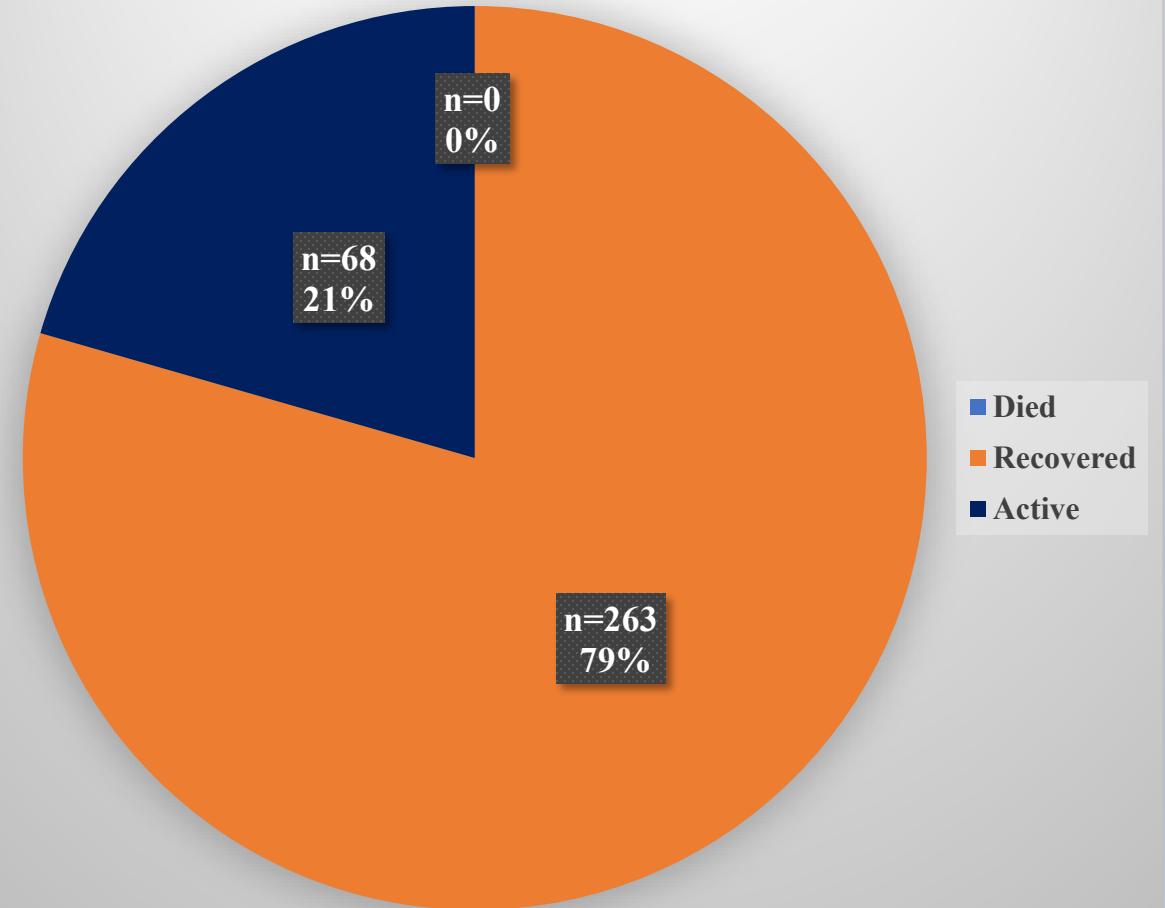


COVID-19 – Peabody Cases & Outcomes - Healthcare Workers – 5/17/21

Cases Among Healthcare Workers

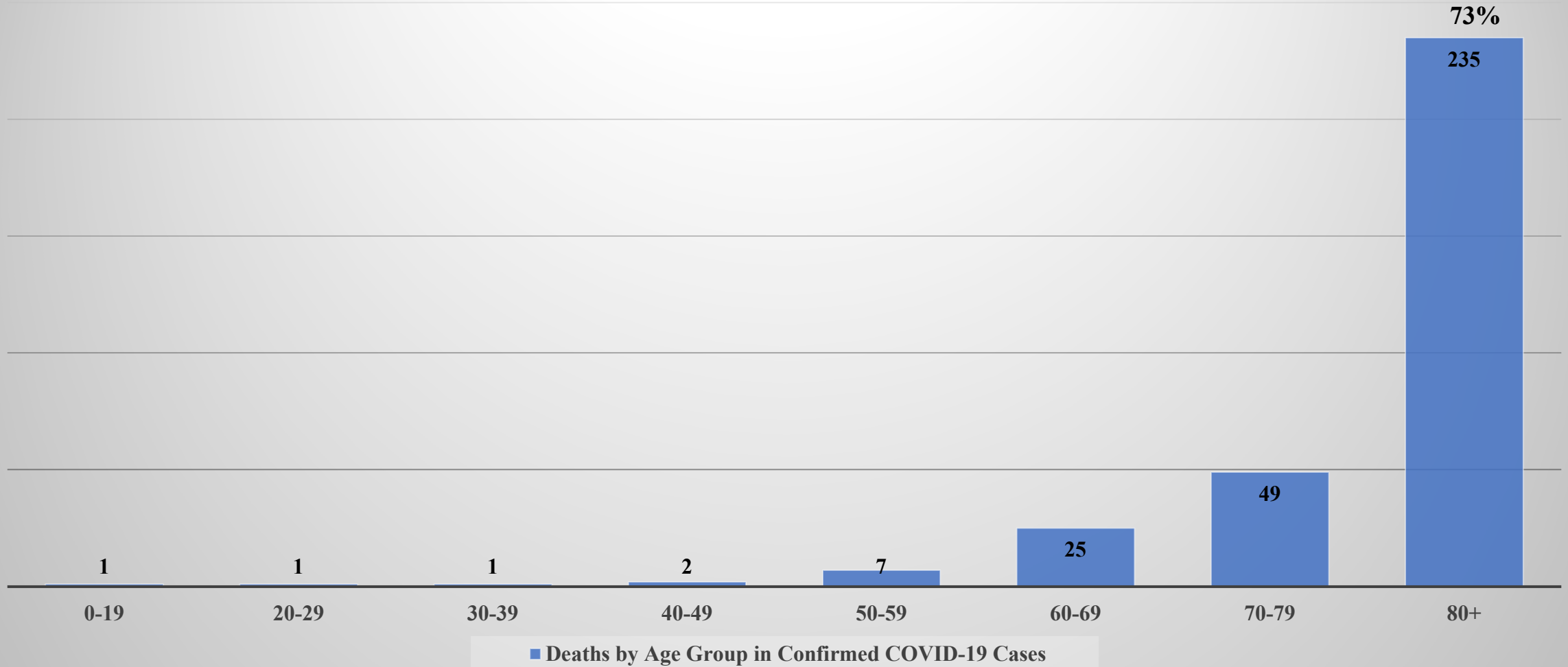


Outcomes Among Healthcare Workers

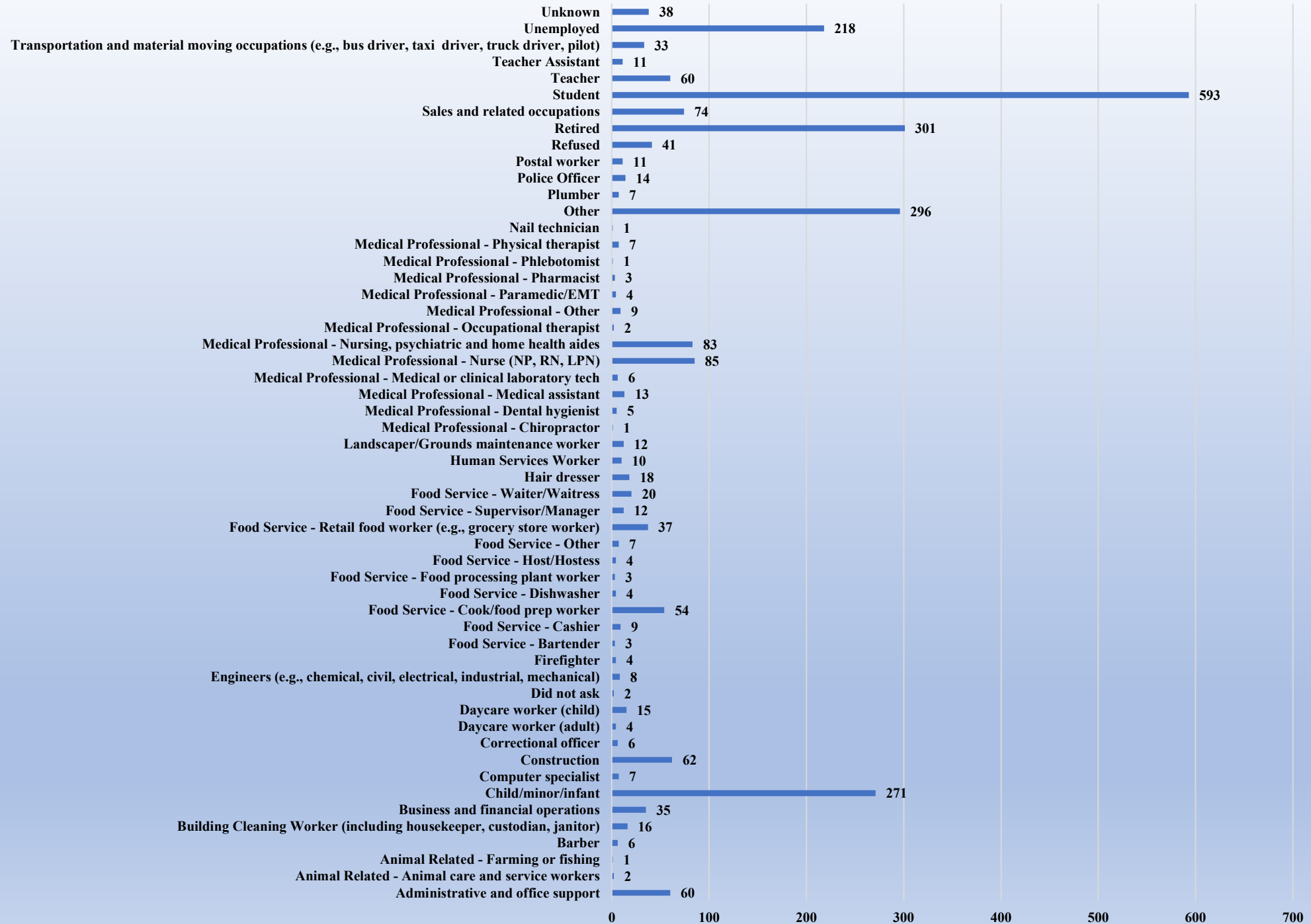


COVID-19- Deaths by Age Group – 5/17/21

Peabody Deaths by Age Group in Confirmed COVID-19 Cases

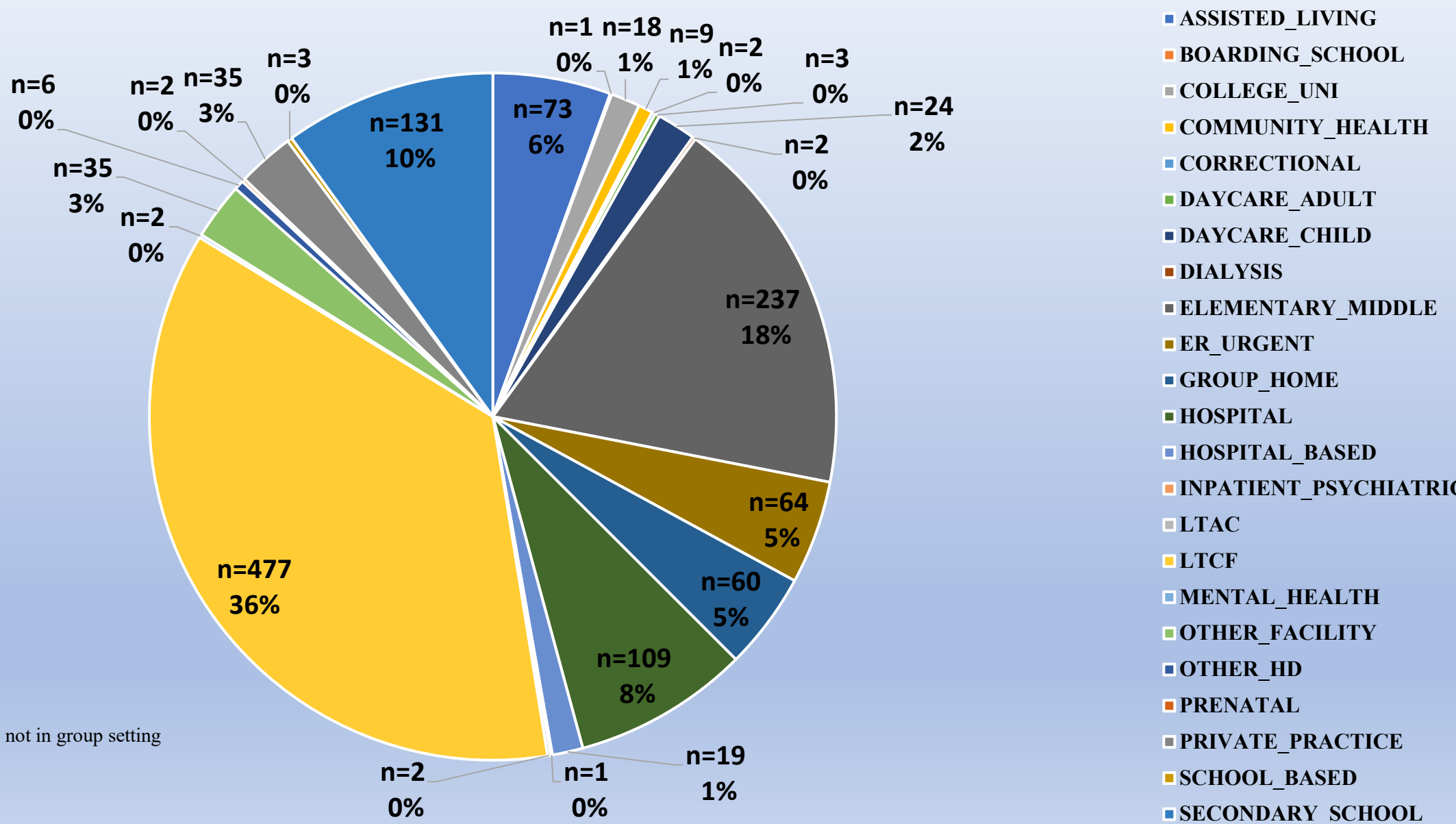


Occupation Data September 1, 2020 to May 17, 2021





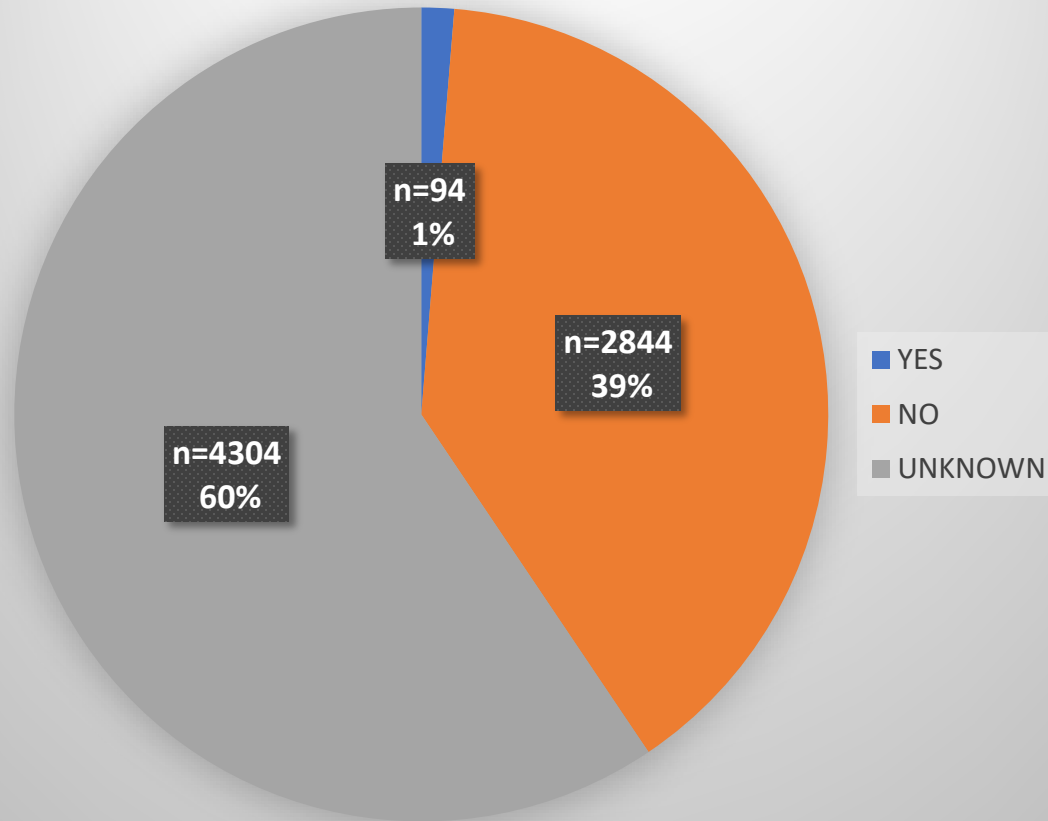
Work/Participate in Group Setting September 1,2020 to May 17, 2021



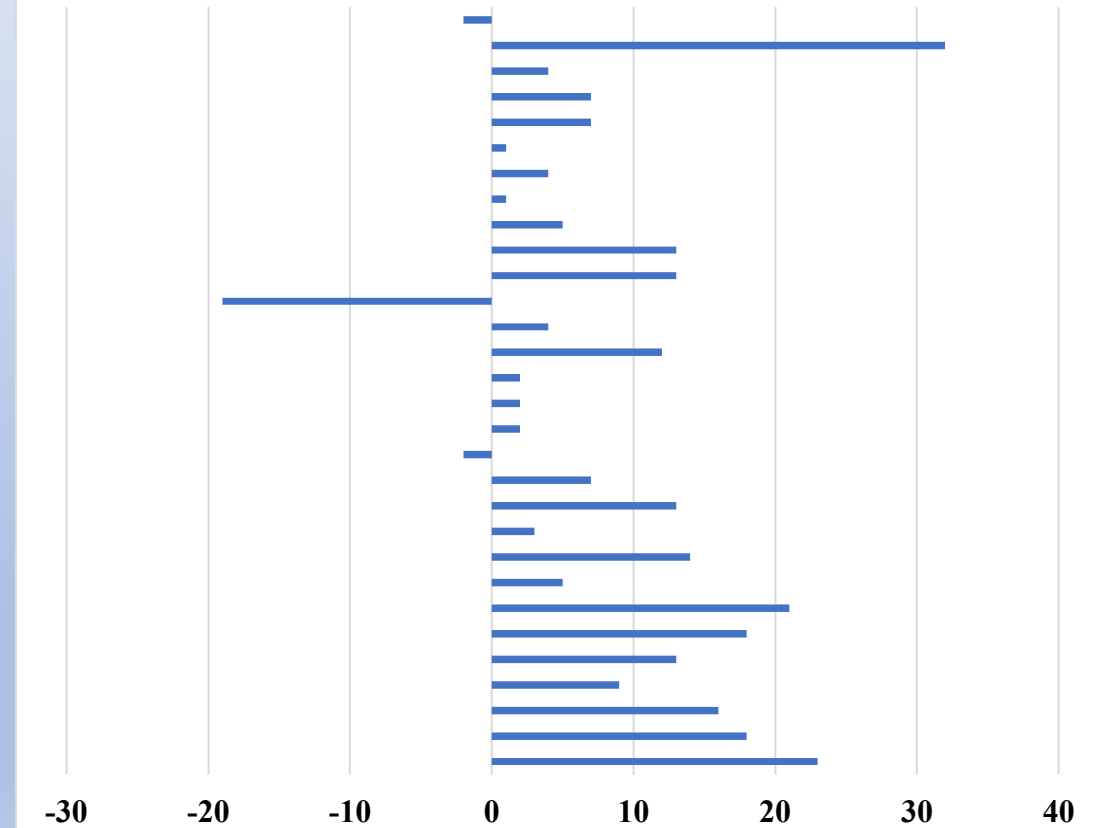
*5,927 (82%) not in group setting

Peabody Travel History 5/17/21

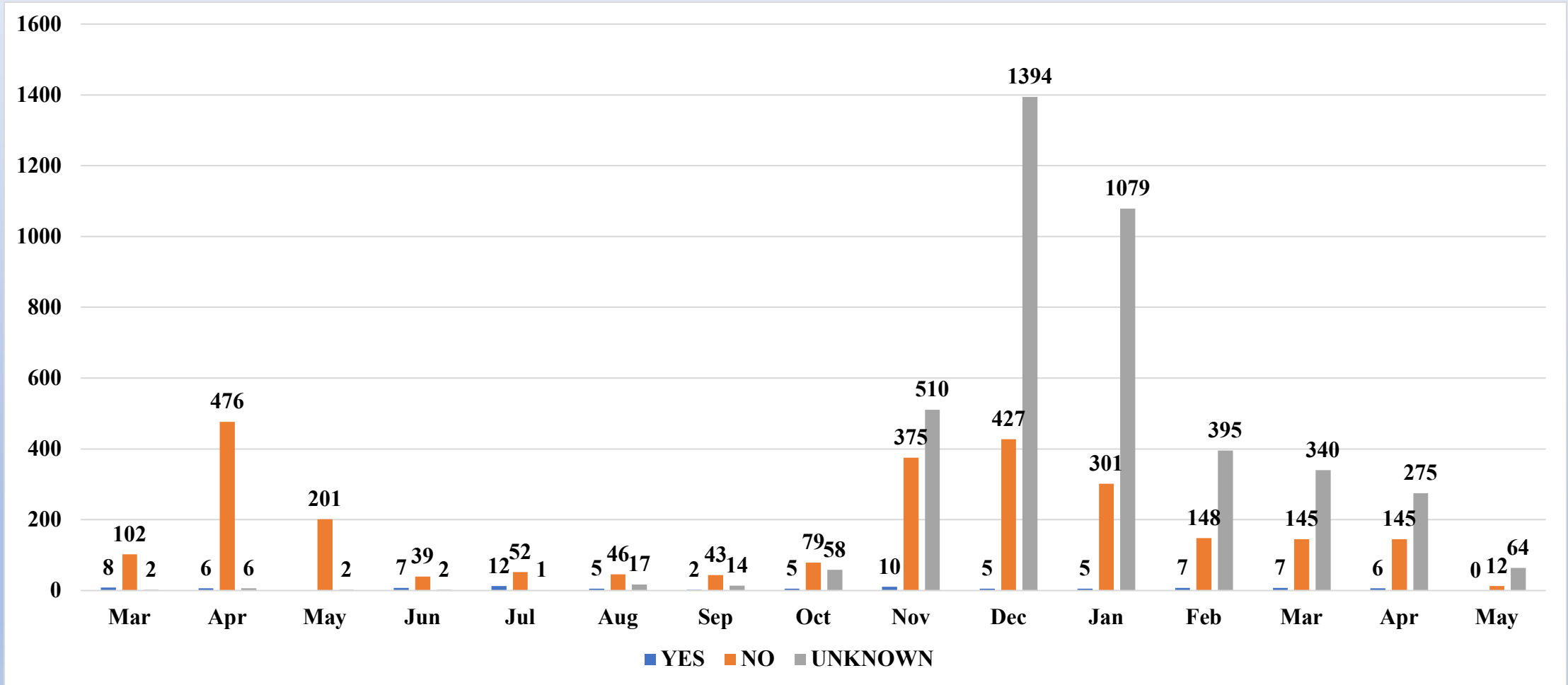
Travel Before Symptom Onset



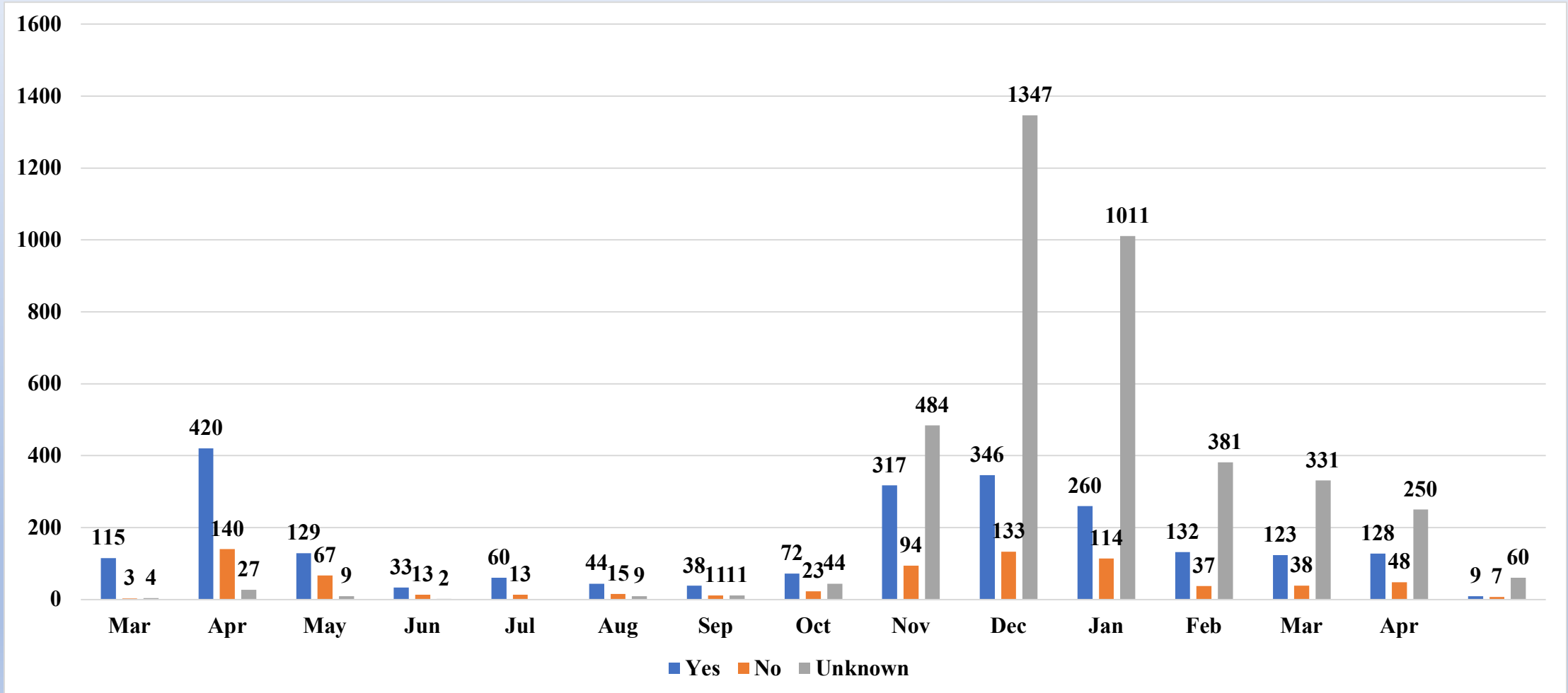
Time Interval Between Travel and Symptom Onset



Travel Before Symptom Onset by Month



Peabody Symptomatic Cases by Month

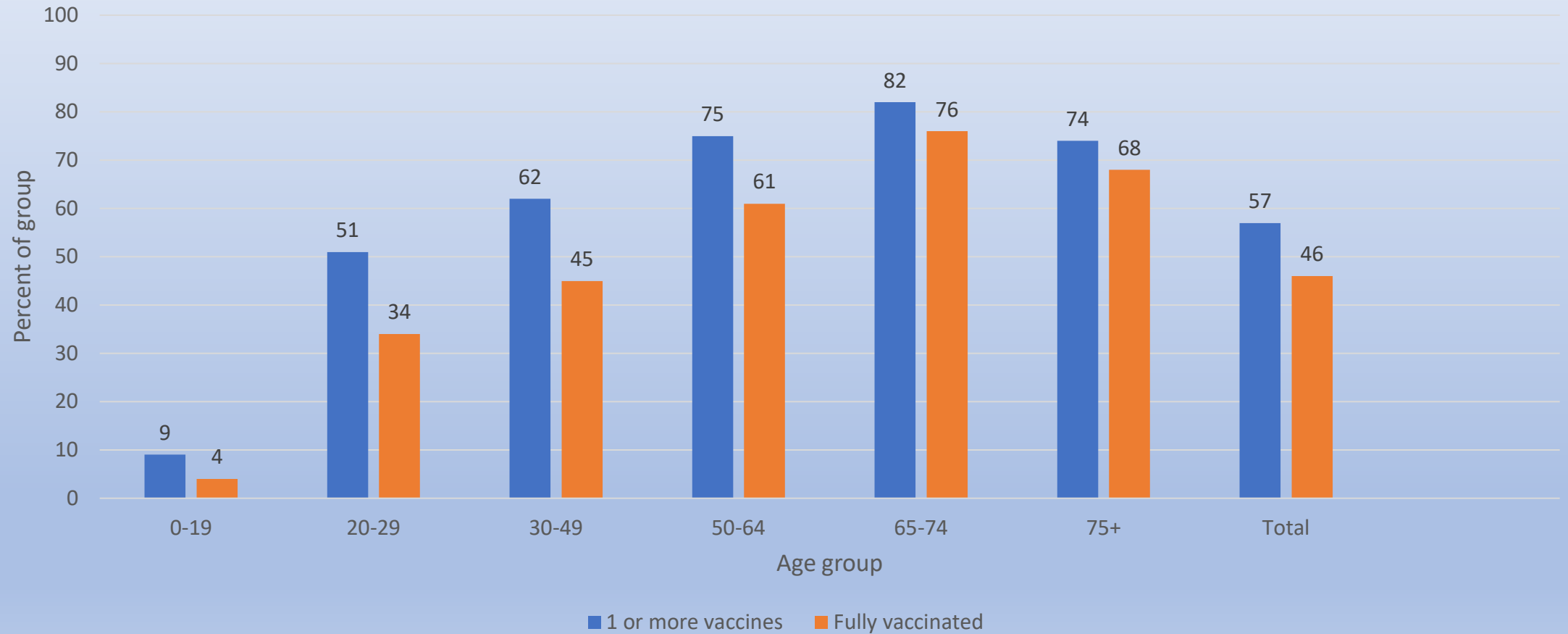


Case Investigations for Peabody – 5/17/21

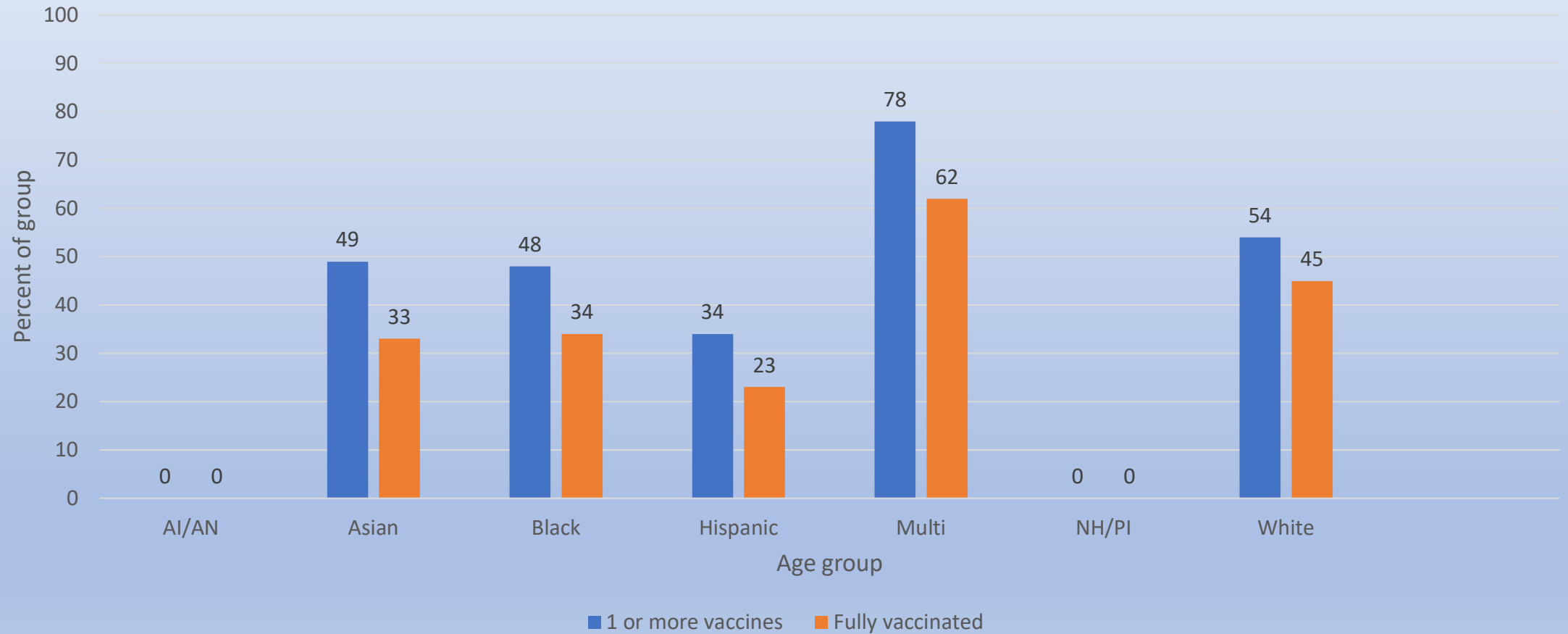
Successfully Completed Investigations	LBOH – 3,088 CTC – 1,730 College University - 6	67%
Still Under Investigation	714	10%
Unable to complete Investigation	Total: 1,704 Lost to Follow up: 1,355 Other: 335	23%

Peabody residents vaccinated by age

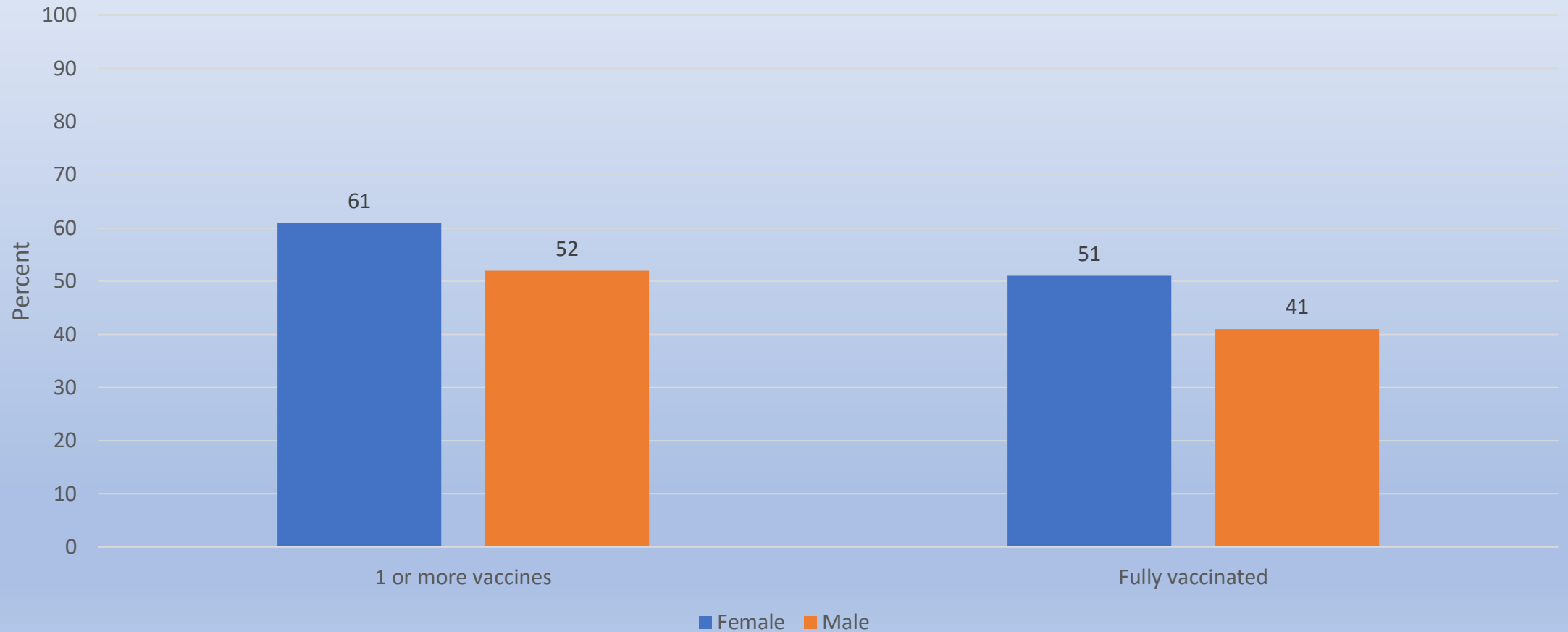
through 5/11/21



Peabody residents vaccinated by race/ethnicity through 5/11/21



% of Peabody residents vaccinated by gender through 5/11/21



City of Peabody-sponsored vaccination clinics

through 5/10/21

- Total doses received: 2610
- Total doses distributed: 2580
 - First doses: 1417
 - Second doses: 1163
- Number of clinics held: 30